



**SCOTTISHPOWER  
RENEWABLES**

# **East Anglia TWO Offshore Windfarm**

## **Chapter 26**

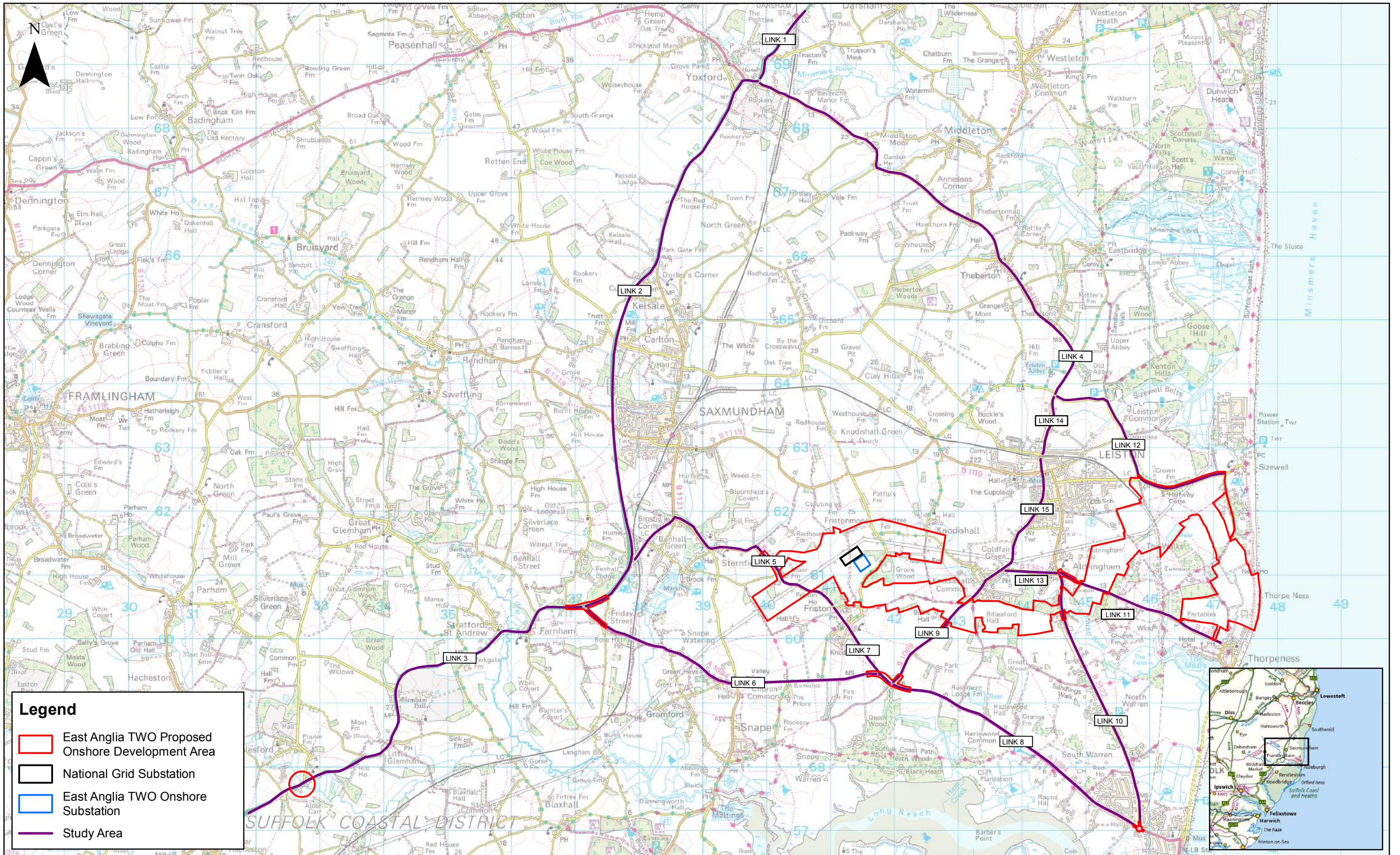
**Traffic and Transport**

**Figures**

Preliminary Environmental Information  
Volume 2

**This page is intentionally blank**





2	08/11/2018	FC	Second Issue.	Prepared: FC
1	13/08/2018	FC	First Issue.	Checked: ST
				Approved: AH

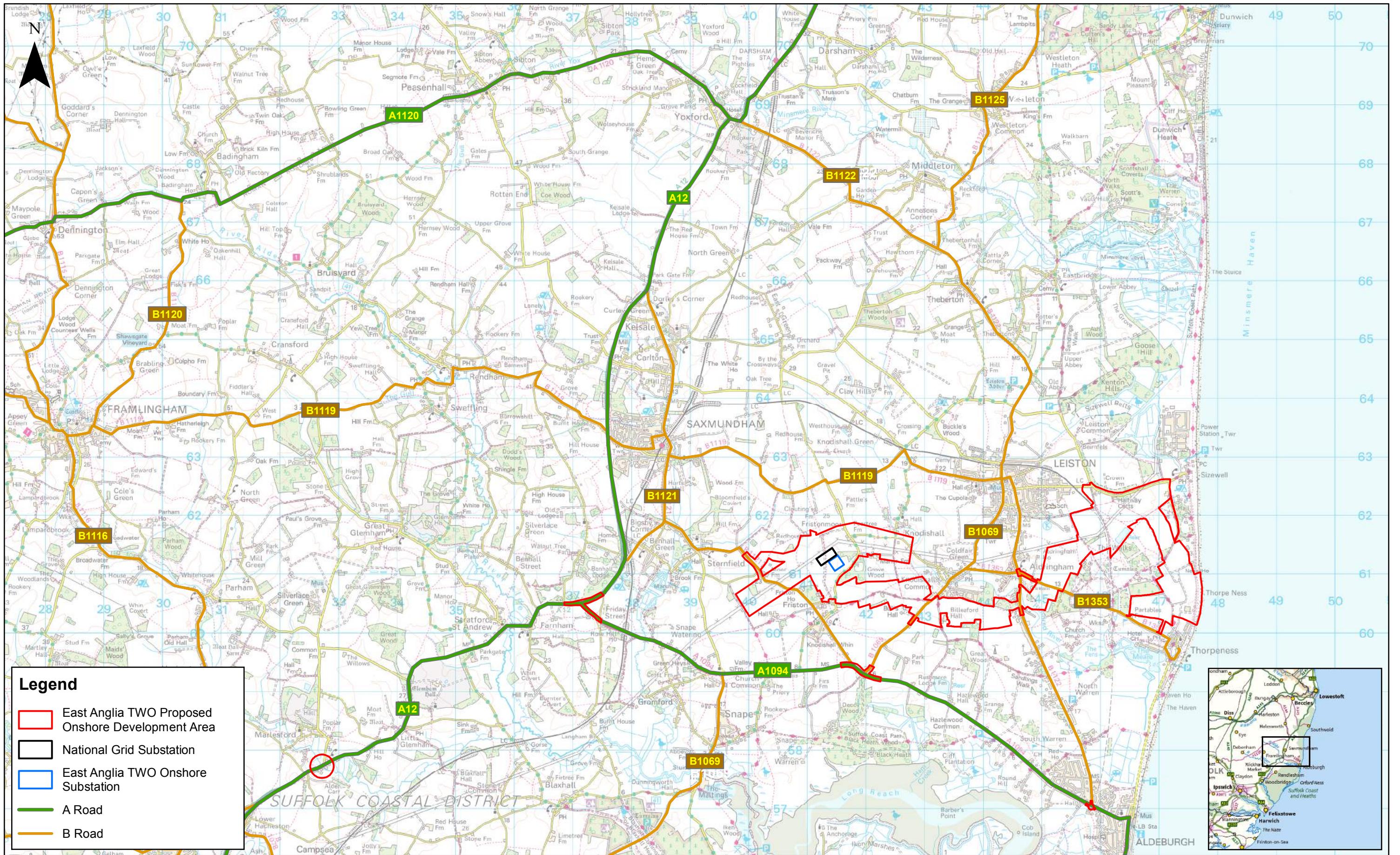
1:55,000  
Scale @ A3  
0 1 2 Km

Source: © Crown copyright and database rights 2018. Ordnance Survey 0100031673.  
This map has been produced to the latest known information at the time of issue, and has been produced for your information only. Please consult with the SPR Offshore GIS team to ensure the content is still current before using the information contained on this map. To the fullest extent permitted by law, we accept no responsibility or liability (whether in contract, tort (including negligence) or otherwise in respect of any errors or omissions in the information contained in the map and shall not be liable for any loss, damage or expense caused by such errors or omissions.

## East Anglia T2O Onshore Highway Study Area

<b>Drg No</b>	EA1N-EA2-DEV-DRG-IBR-00TBC149	<b>Coordinate System:</b>	BNG
<b>Rev</b>	2	<b>Datum:</b>	OSGB36
<b>Date</b>	08/11/18		
<b>Figure</b>	26.1		





**Legend**

- East Anglia TWO Proposed Onshore Development Area
- National Grid Substation
- East Anglia TWO Onshore Substation
- A Road
- B Road



Rev	Date	By	Comment	Approved:
2	08/11/2018	FC	Second Issue.	Prepared: FC
1	13/08/2018	FC	First Issue.	Checked: ST
				Approved: AH

1:60,000  
Scale @ A3

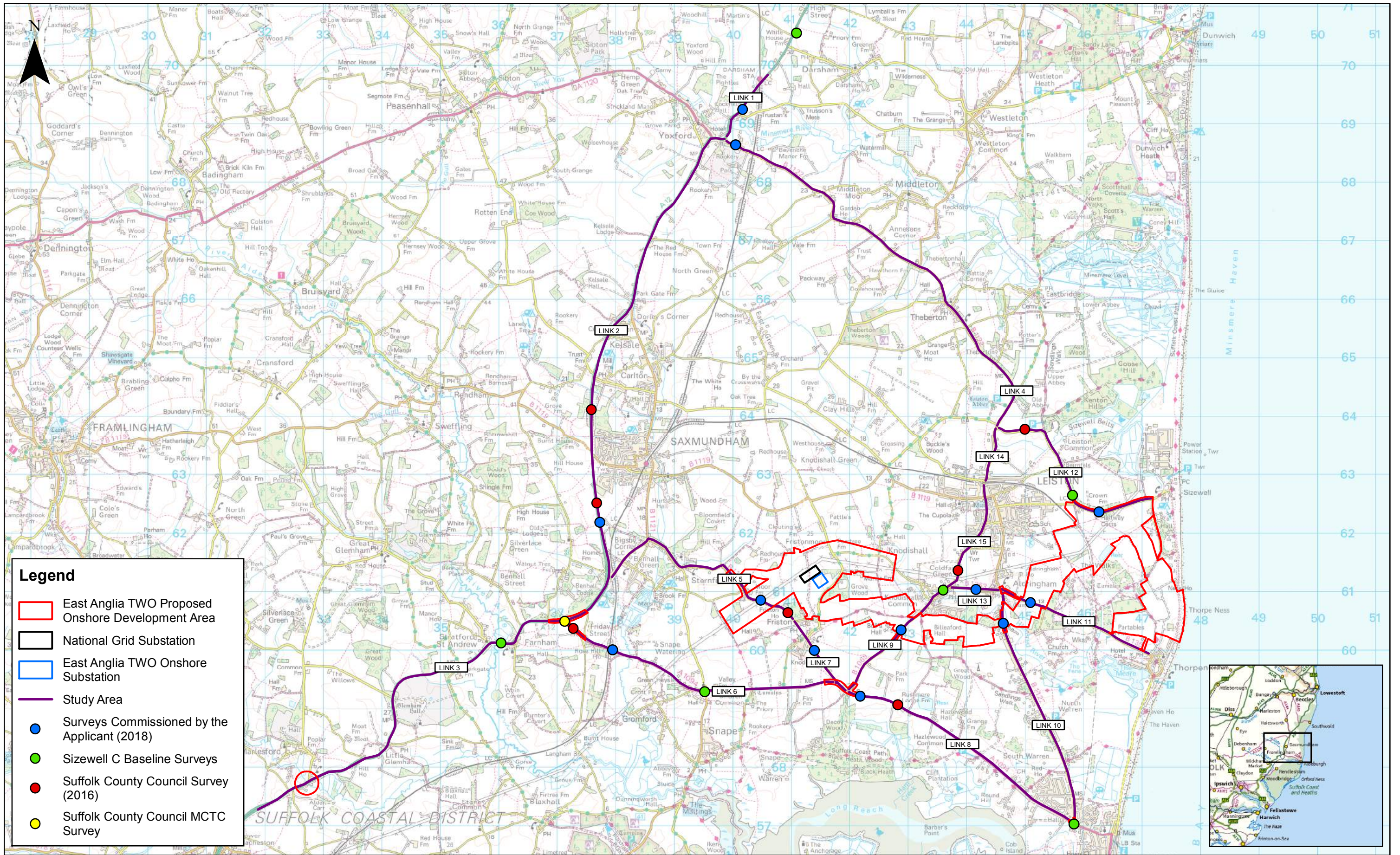
0 1 2 Km

Source: © Crown copyright and database rights 2018. Ordnance Survey 0100031673.  
This map has been produced to the latest known information at the time of issue, and has been produced for your information only. Please consult with the SPR Offshore GIS team to ensure the content is still current before using the information contained on this map. To the fullest extent permitted by law, we accept no responsibility or liability (whether in contract, tort (including negligence) or otherwise in respect of any errors or omissions in the information contained in the map and shall not be liable for any loss, damage or expense caused by such errors or omissions.

**East Anglia TWO**  
Existing Highway Network

<b>Drg No</b>	EA1N-EA2-DEV-DRG-IBR-00TBC146	Coordinate System: BNG Datum: OSGB36
<b>Rev</b>	2	
<b>Date</b>	08/11/18	
<b>Figure</b>	26.2	





- Legend**
- East Anglia TWO Proposed Onshore Development Area
  - National Grid Substation
  - East Anglia TWO Onshore Substation
  - Study Area
  - Surveys Commissioned by the Applicant (2018)
  - Sizewell C Baseline Surveys
  - Suffolk County Council Survey (2016)
  - Suffolk County Council MCTC Survey



Rev	Date	By	Comment	Approved:
2	08/11/2018	FC	Second Issue.	Prepared: FC
1	13/08/2018	FC	First Issue.	Checked: ST
				Approved: AH

1:60,000  
Scale @ A3

0 1 2 Km

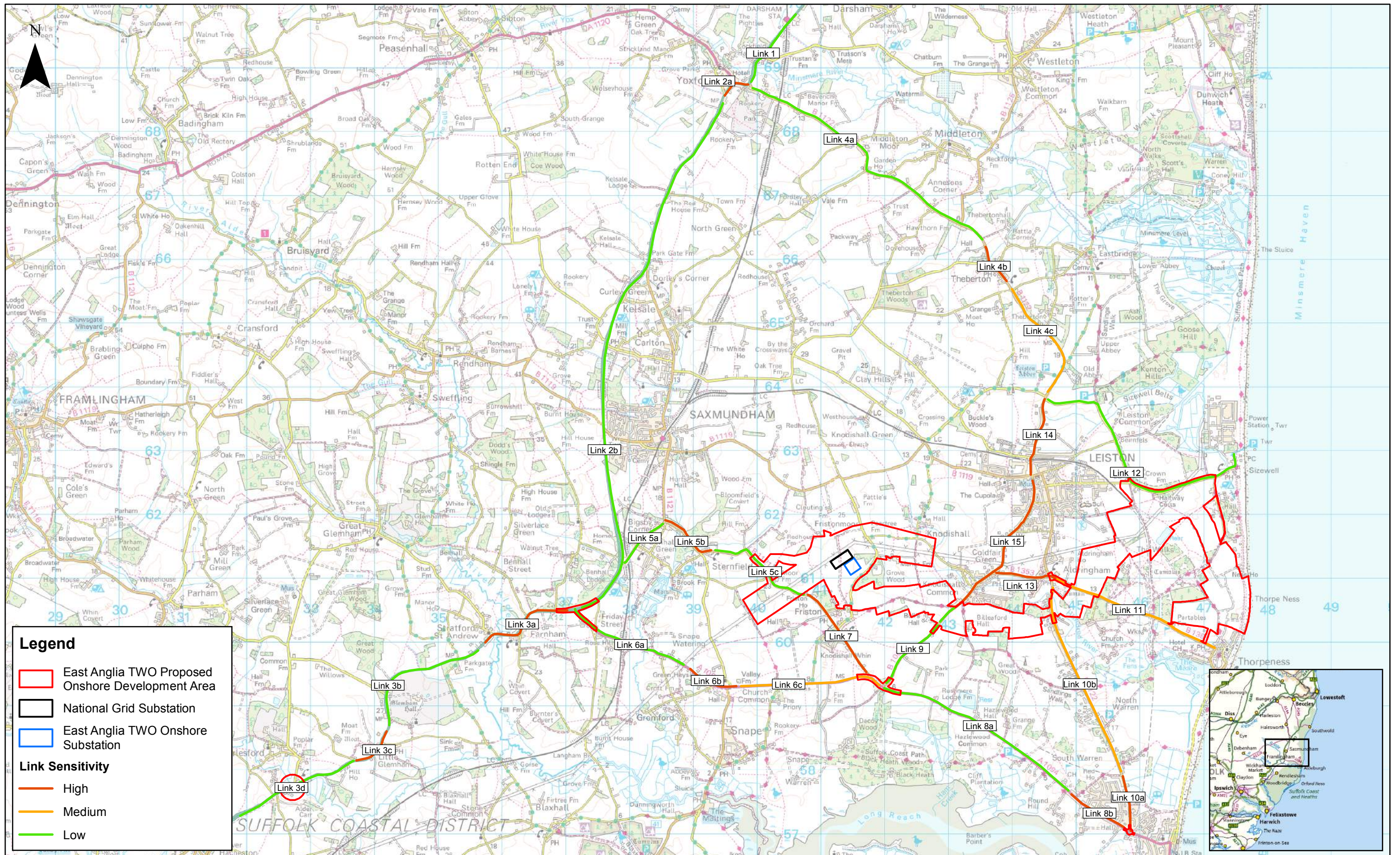
Source: © Suffolk County Council, 2016. © Crown copyright and database rights 2018. Ordnance Survey 0100031673.  
This map has been produced to the latest known information at the time of issue, and has been prepared for your information only. Please consult with the SPR Offshore GIS team to ensure the content is still current before using the information contained on this map. To the fullest extent permitted by law, we accept no responsibility or liability (whether in contract, tort (including negligence) or otherwise in respect of any errors or omissions in the information contained in the map and shall not be liable for any loss, damage or expense caused by such errors or omissions.

## East Anglia TWO

### Traffic Count Survey Locations

<b>Drg No</b>	EA1N-EA2-DEV-DRG-IBR-00TBC150	
<b>Rev</b>	2	Coordinate System: BNG
<b>Date</b>	08/11/18	Datum: OSG36
<b>Figure</b>	26.3	





**Legend**

- East Anglia TWO Proposed Onshore Development Area
- National Grid Substation
- East Anglia TWO Onshore Substation

**Link Sensitivity**

- High
- Medium
- Low



Rev	Date	By	Comment	Approved:
2	08/11/2018	FC	Second Issue.	Prepared: FC
1	13/08/2018	FC	First Issue.	Checked: ST
				Approved: AH

Scale @ A3 1:55,000

0 1 2 Km

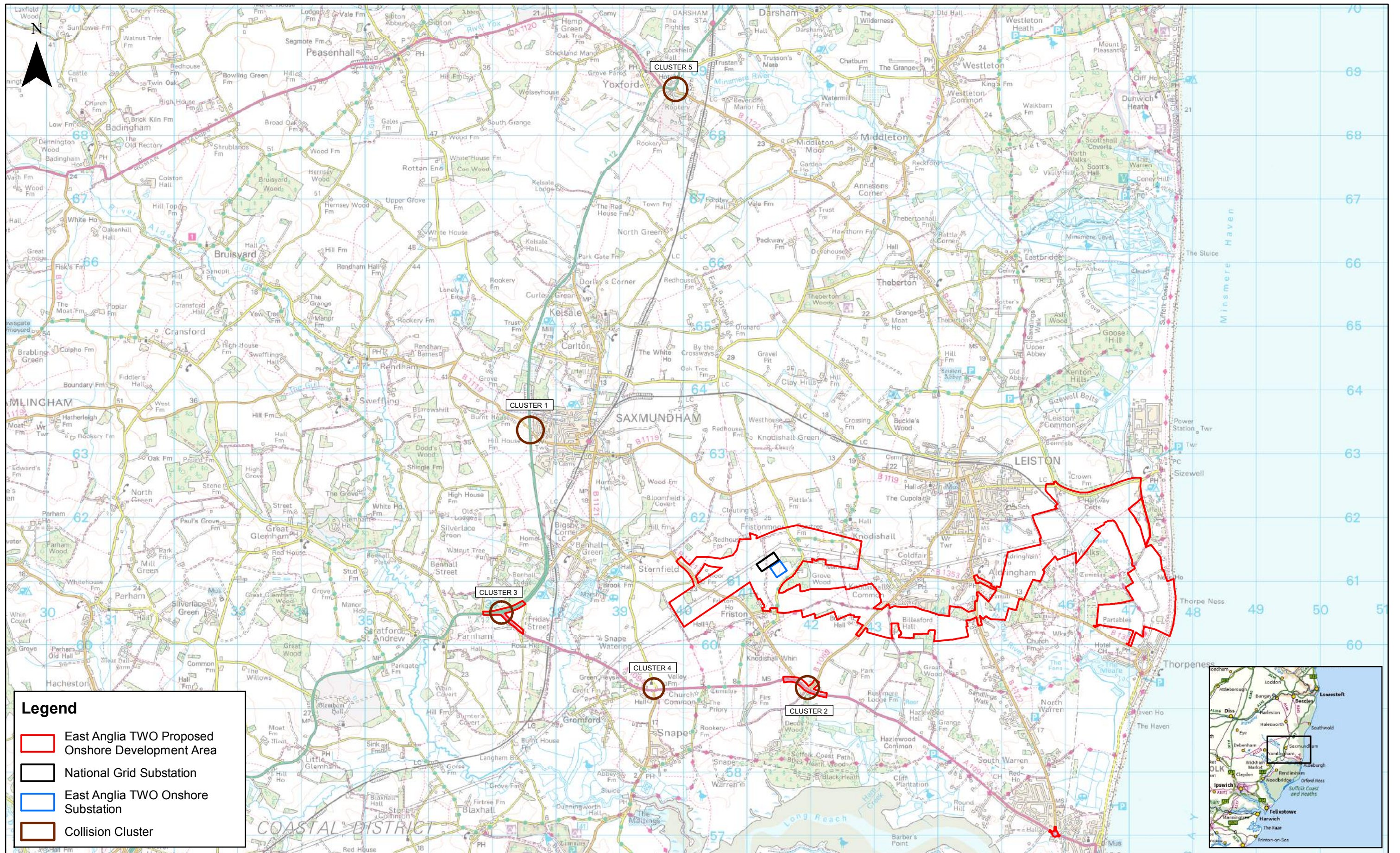
Source: © Crown copyright and database rights 2018. Ordnance Survey 0100031673.  
 This map has been produced to the latest known information at the time of issue, and has been produced for your information only. Please consult with the SPR Offshore GIS team to ensure the content is still current before using the information contained on this map. To the fullest extent permitted by law, we accept no responsibility or liability (whether in contract, tort (including negligence) or otherwise in respect of any errors or omissions in the information contained in the map and shall not be liable for any loss, damage or expense caused by such errors or omissions.

## East Anglia TWO

### Link Sensitivity

<b>Drg No</b>	EA1N-EA2-DEV-DRG-IBR-00TBC147
<b>Rev</b>	2
<b>Date</b>	08/11/18
<b>Figure</b>	26.4
<b>Coordinate System:</b>	BNG
<b>Datum:</b>	OSGB36





**Legend**

- East Anglia T2O Proposed Onshore Development Area
- National Grid Substation
- East Anglia T2O Onshore Substation
- Collision Cluster

1:55,000  
Scale @ A3

## East Anglia T2O

### Collision Cluster Locations



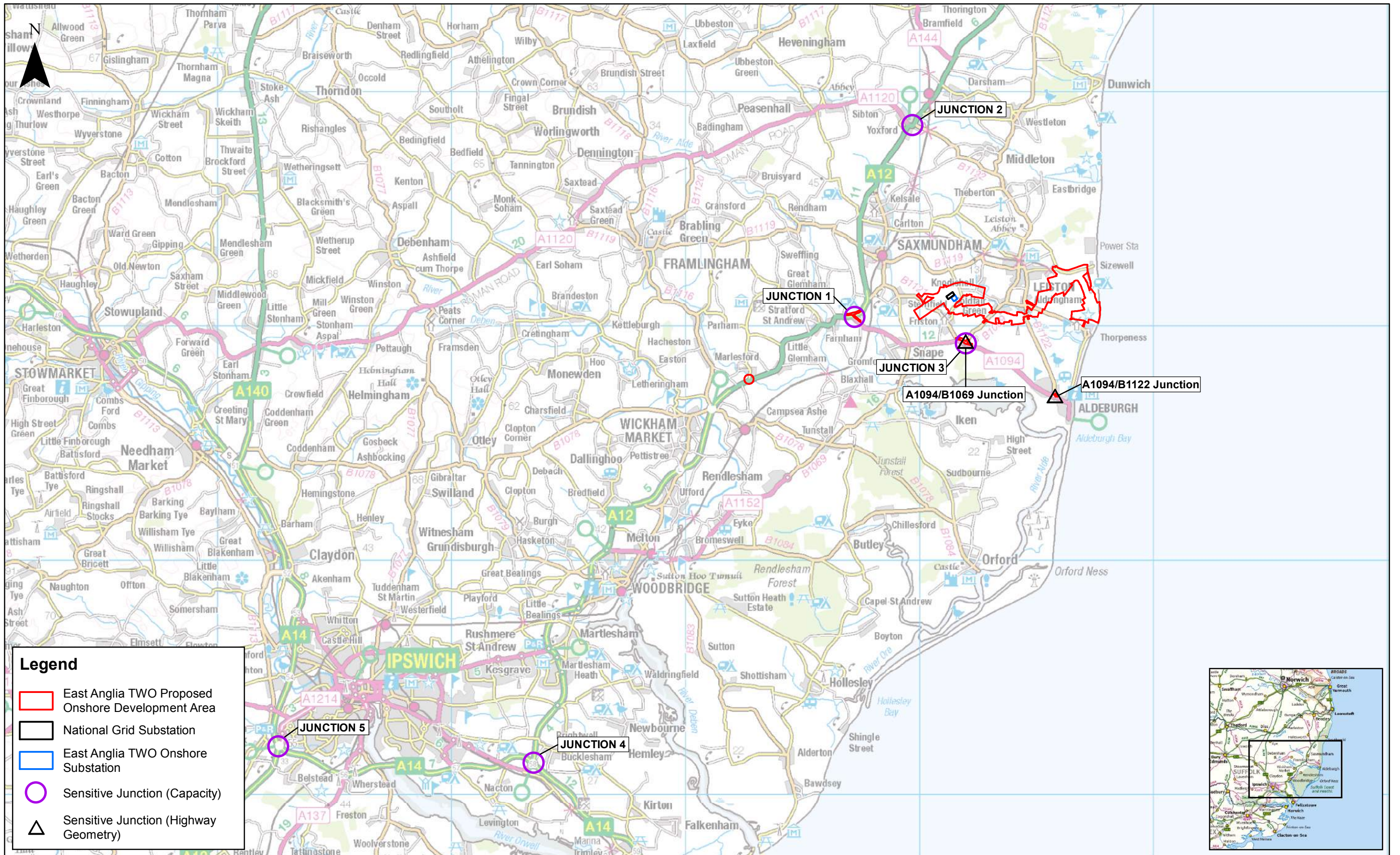
Rev	Date	By	Comment	Approved:
2	08/11/2018	FC	Second Issue.	FC
1	13/08/2018	FC	First Issue.	ST

Prepared:	Checked:	Approved:
FC	ST	AH

Drg No	Rev	Date	Figure
EA1N-EA2-DEV-DRG-IBR-00TBC145	2	08/11/18	26.5

Coordinate System:  
BNG  
Datum:  
OSGB36





Legend	
	East Anglia TWO Proposed Onshore Development Area
	National Grid Substation
	East Anglia TWO Onshore Substation
	Sensitive Junction (Capacity)
	Sensitive Junction (Highway Geometry)



Rev	Date	By	Comment	Approved:
2	08/11/2018	FC	Second Issue.	FC
1	13/08/2018	FC	First Issue.	ST

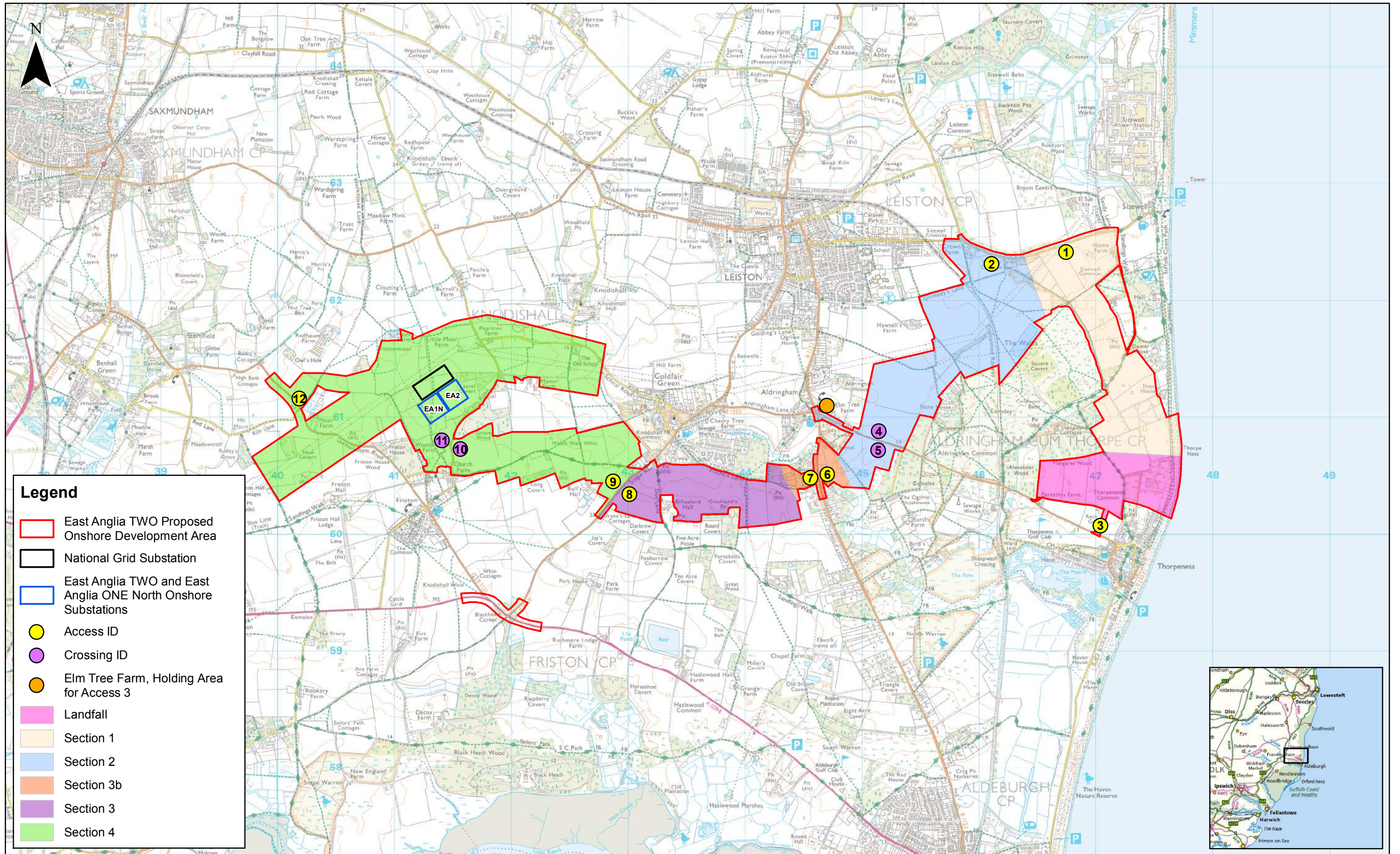
1:150,000	Scale @ A3
<small>Source: © Crown copyright and database rights 2018. Ordnance Survey 0100031673.          This map has been produced to the latest known information at the time of issue, and has been produced for your information only. Please consult with the SPR Offshore GIS team to ensure the content is still current before using the information contained on this map. To the fullest extent permitted by law, we accept no responsibility or liability (whether in contract, tort (including negligence) or otherwise in respect of any errors or omissions in the information contained in the map and shall not be liable for any loss, damage or expense caused by such errors or omissions.</small>	
Approved:	AH

## East Anglia TWO

### Sensitive Junction Locations

Drg No	EA1N-EA2-DEV-DRG-IBR-00TBC148
Rev	2
Date	08/11/18
Figure	26.6
Coordinate System:	BNG
Datum:	OSGB36





**Legend**

- East Anglia TWO Proposed Onshore Development Area
- National Grid Substation
- East Anglia TWO and East Anglia ONE North Onshore Substations
- Access ID
- Crossing ID
- Elm Tree Farm, Holding Area for Access 3
- Landfall
- Section 1
- Section 2
- Section 3b
- Section 3
- Section 4



Rev	Date	By	Comment	Approved:
2	08/11/2018	FC	Second Issue.	Prepared: FC
1	13/08/2018	FC	First Issue.	Checked: ST
				Approved: AH

1:30,000  
Scale @ A3

0 0.5 1 Km

Source: © Crown copyright and database rights 2018. Ordnance Survey 0100031673.  
This map has been produced to the latest known information at the time of issue, and has been produced for your information only. Please consult with the SPR Offshore GIS team to ensure the content is still current before using the information contained on this map. To the fullest extent permitted by law, we accept no responsibility or liability (whether in contract, tort (including negligence) or otherwise in respect of any errors or omissions in the information contained in the map and shall not be liable for any loss, damage or expense caused by such errors or omissions.

## East Anglia TWO

### Access Locations and Associated Onshore Infrastructure

<b>Drg No</b>	EA1N-EA2-DEV-DRG-IBR-00TBC153
<b>Rev</b>	2
<b>Date</b>	08/11/18
<b>Figure</b>	26.7
<b>Coordinate System:</b>	BNG
<b>Datum:</b>	OSGB36



**This page is intentionally blank**