



**SCOTTISHPOWER
RENEWABLES**

East Anglia TWO Offshore Windfarm

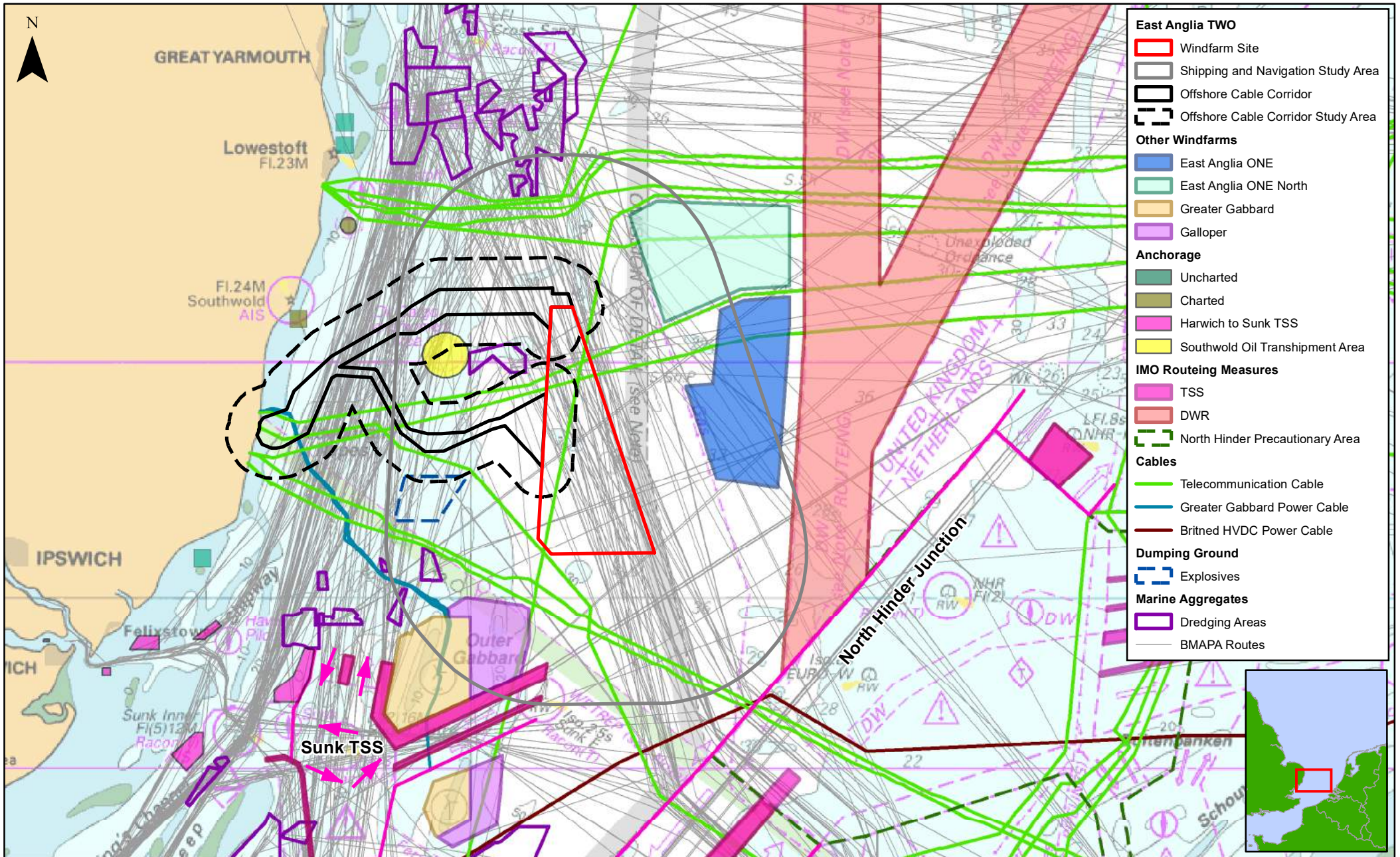
Chapter 14

Shipping and Navigation

Figures

Preliminary Environmental Information
Volume 2

This page is intentionally blank

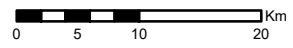


- East Anglia TWO**
- Windfarm Site
 - Shipping and Navigation Study Area
 - Offshore Cable Corridor
 - Offshore Cable Corridor Study Area
- Other Windfarms**
- East Anglia ONE
 - East Anglia ONE North
 - Greater Gabbard
 - Galloper
- Anchorage**
- Uncharted
 - Charted
 - Harwich to Sunk TSS
 - Southwold Oil Transhipment Area
- IMO Routing Measures**
- TSS
 - DWR
 - North Hinder Precautionary Area
- Cables**
- Telecommunication Cable
 - Greater Gabbard Power Cable
 - Britned HVDC Power Cable
- Dumping Ground**
- Explosives
- Marine Aggregates**
- Dredging Areas
 - BMAPA Routes



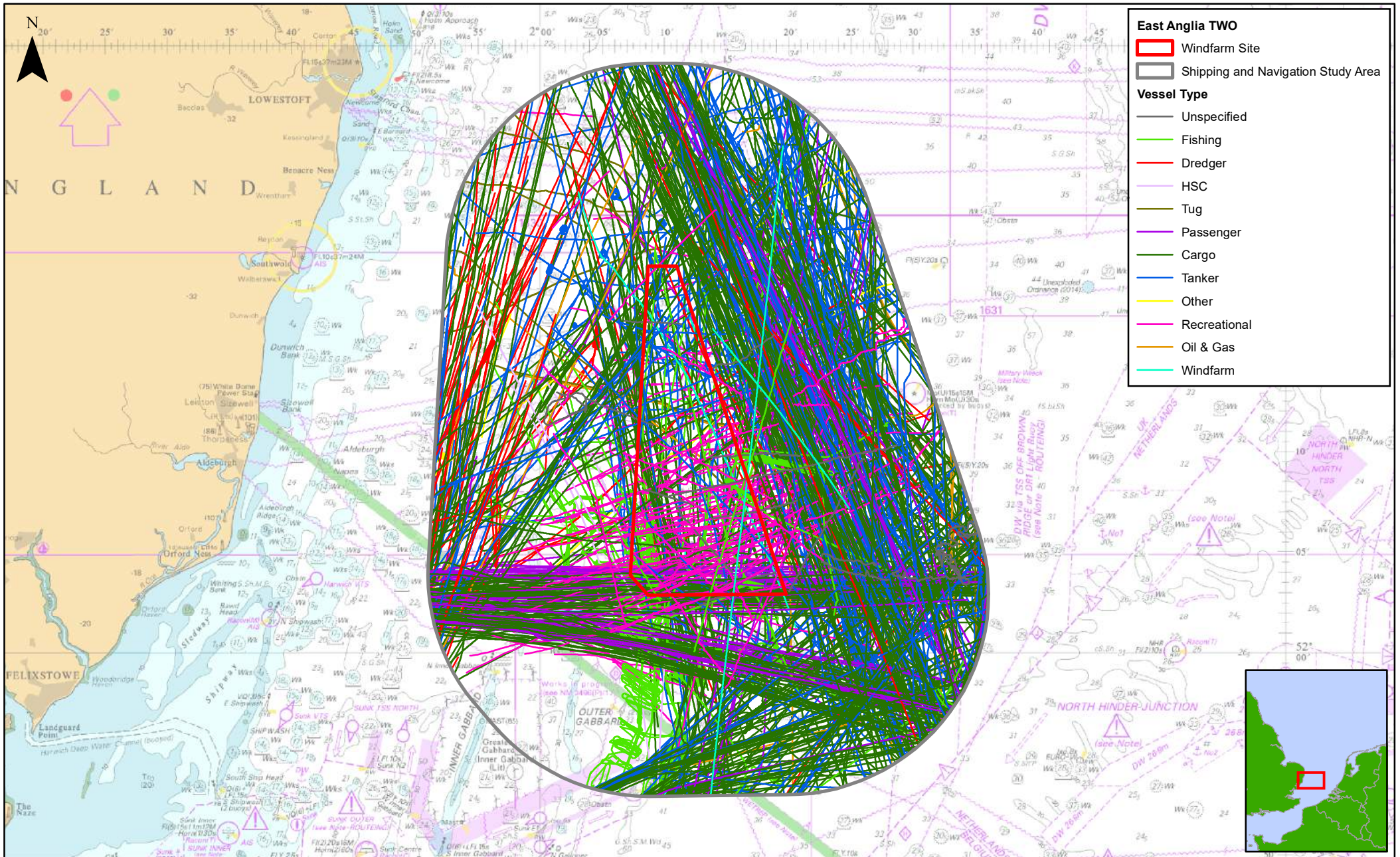
Rev	Date	By	Comment
0	15/11/2018	DS	First Issue.

Scale @ A3	1:1,000,000
Prepared: DS	Checked: SW
Approved: SW	



Navigational Features Overview	
Drg No	EA1-GEN-DA-SPR-008349
Rev	0
Date	15/11/2018
Figure	14.1

Datum:	WGS 1984
Projection:	Mercator



Rev	Date	By	Comment
0	14/11/2018	DS	First Issue.

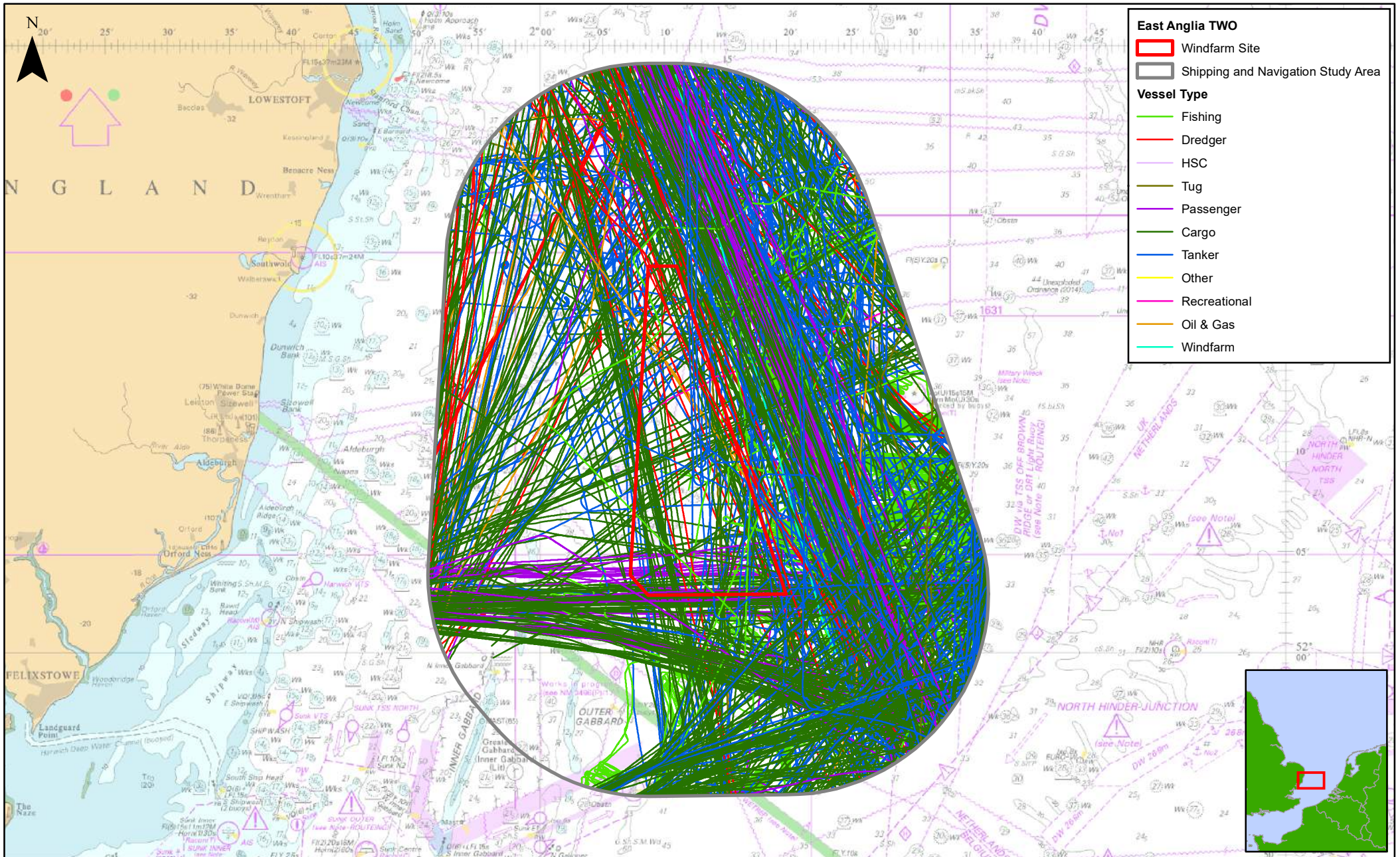
1:750,000	Scale @ A3		
0	5	10	20
Km			
Prepared:	DS	Checked:	SW
Approved:	SW		

Overview of AIS and Radar Data within Shipping and Navigation Study Area Excluding Temporary Tracks (14 Days Summer 2017)

This map has been produced to the latest known information at the time of issue, and has been produced for your information only. Please consult with the SPR Office (01206 222222) to ensure the content is still relevant before using the information contained on this map. In the future, we accept no responsibility or liability (whether in contract, tort (including negligence) or otherwise) in respect of any error or omission in the information contained in this map and will not be liable for any loss, damage or expense caused by such error or omission.

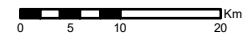
© Crown Copyright and SeaZone Solutions Limited. All rights reserved. Product Licence No. 020101 001. This product has been derived in part from material obtained from the UK Hydrographic Office with the permission of the Controller of Her Majesty's Stationery Office and UK Hydrographic Office. NOT TO BE USED FOR NAVIGATION.

Drg No	EA1-GEN-DA-SPR-008349
Rev	0
Date	14/11/2018
Figure	14.2
Datum:	WGS 1984
Projection:	Mercator



Rev	Date	By	Comment
0	14/11/2018	DS	First Issue.

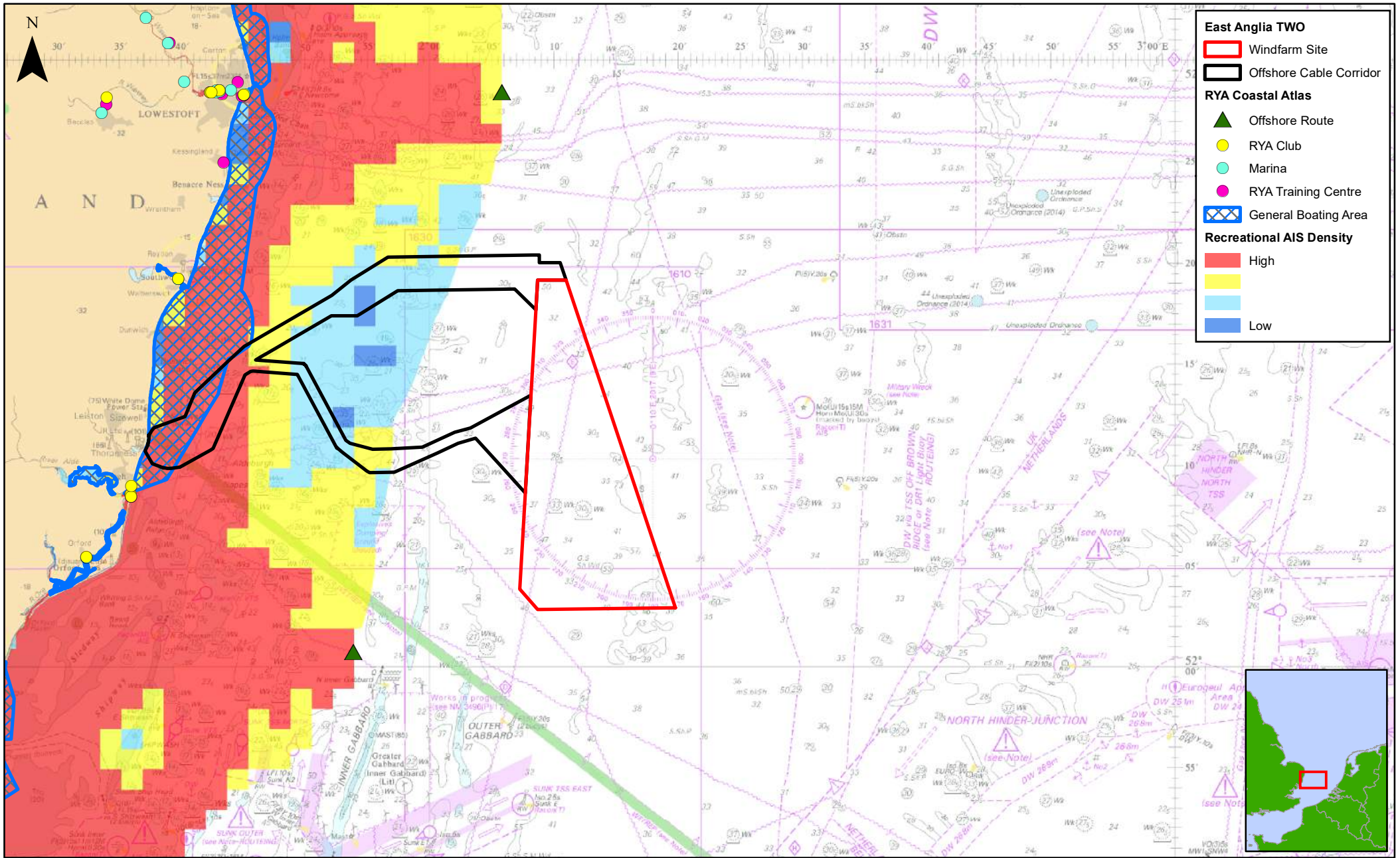
1:750,000	Scale @ A3
Prepared: DS	Checked: SW
Approved: SW	



Overview of AIS Data within Shipping and Navigation Study Area Excluding Temporary Tracks (14 Days Winter 2017)

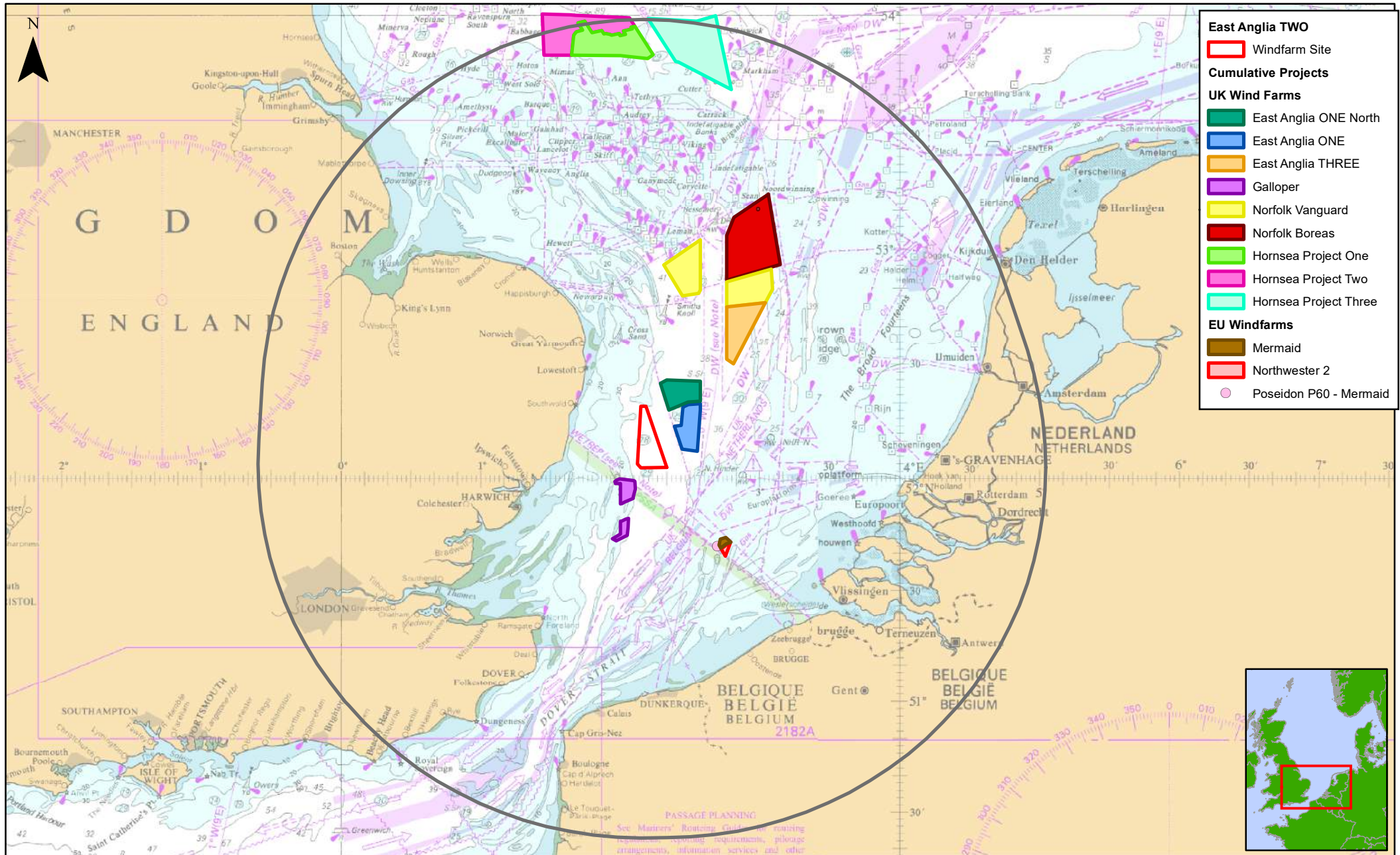
Drg No	EA1-GEN-DA-SPR-008349
Rev	0
Date	14/11/2018
Figure	14.3

Datum: WGS 1984
Projection: Mercator



				1:750,000		RYA Coastal Atlas (2016)	Drg No	EA1-GEN-DA-SPR-008349
	Prepared:	DS		Scale @ A3			Rev	0
0	03/12/2018	DS	First Issue.	Checked:	SW		Date	03/12/2018
Rev	Date	By	Comment	Approved:	SW		Figure	14.4

This map has been produced to the latest known information at the time of issue, and has been produced for your information only. Please consult with the SPR Office (01203 250000) to ensure the content is still current before using the information on this map. In the future, should it be permitted by law, we accept no responsibility or liability (whether in contract, tort (including negligence) or otherwise) in respect of any error or omission in the information contained in this map and do not hold it liable for any loss, damage or expense caused by such errors or omissions. © Crown Copyright and SeaZone Solutions Limited. All rights reserved. Product Licence No. 082010 001. This product has been derived in part from material obtained from the UK Hydrographic Office with the permission of the Controller of Her Majesty's Stationery Office and UK Hydrographic Office. NOT TO BE USED FOR NAVIGATION.



			Scale @ A3			Cumulative Projects within 100nm	Drg No	EA1-GEN-DA-SPR-008349	
	0	14/11/2018	DS	First Issue.			Checked:	SW	Rev
Rev	Date	By	Comment	Approved:	SW	Date	14/11/2018	Projection:	Mercator
Figure							14.5		

This page is intentionally blank