

Legend

- Suffolk Coastal Path (SCP)**
- Areas of SCP assessed on site to have visibility of development**

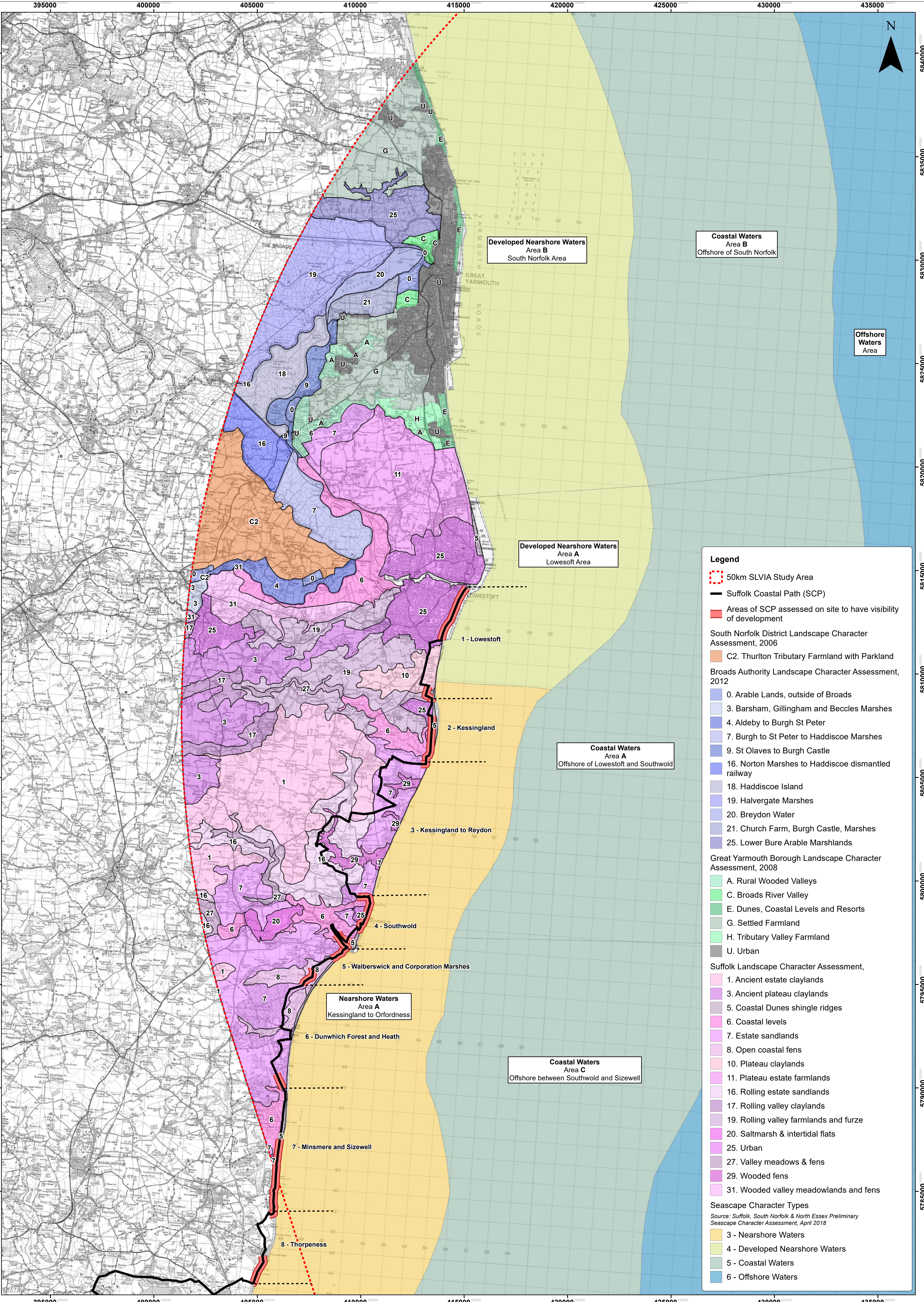
SCP assessed against blade tip ZTV - No. of Blade Tips Visible

- 1 - 9
- 10 - 18
- 19 - 27
- 28 - 36
- 37 - 45
- 46 - 53

No. of Blade Tips Visible

- 1 - 9
- 10 - 18
- 19 - 27
- 28 - 36
- 37 - 45
- 46 - 53

Blade Tip:	300m	Observer height:	2m
DTM:	OS T5	Surface features:	Excluded
DTM resolution:	10m	Earth curvature:	Included



Legend

- 50km SLVIA Study Area
- Suffolk Coastal Path (SCP)
- Areas of SCP assessed on site to have visibility of development

South Norfolk District Landscape Character Assessment, 2006

- C2. Thurilton Tributary Farmland with Parkland

Broads Authority Landscape Character Assessment, 2012

- 0. Arable Lands, outside of Broads
- 3. Barsham, Gillingham and Beccles Marshes
- 4. Aldeby to Burgh St Peter
- 7. Burgh to St Peter to Haddiscoe Marshes
- 9. St Olaves to Burgh Castle
- 16. Norton Marshes to Haddiscoe dismantled railway
- 18. Haddiscoe Island
- 19. Halvergate Marshes
- 20. Breydon Water
- 21. Church Farm, Burgh Castle, Marshes
- 25. Lower Bure Arable Marshlands

Great Yarmouth Borough Landscape Character Assessment, 2008

- A. Rural Wooded Valleys
- C. Broads River Valley
- E. Dunes, Coastal Levels and Resorts
- G. Settled Farmland
- H. Tributary Valley Farmland
- U. Urban

Suffolk Landscape Character Assessment,

- 1. Ancient estate claylands
- 3. Ancient plateau claylands
- 5. Coastal Dunes shingle ridges
- 6. Coastal levels
- 7. Estate sandlands
- 8. Open coastal fens
- 10. Plateau claylands
- 11. Plateau estate farmlands
- 16. Rolling estate sandlands
- 17. Rolling valley claylands
- 19. Rolling valley farmlands and furze
- 20. Saltmarsh & intertidal flats
- 25. Urban
- 27. Valley meadows & fens
- 29. Wooded fens
- 31. Wooded valley meadowlands and fens

Seascape Character Types

Source: Suffolk, South Norfolk & North Essex Preliminary Seascape Character Assessment, April 2018

- 3 - Nearshore Waters
- 4 - Developed Nearshore Waters
- 5 - Coastal Waters
- 6 - Offshore Waters