

Legend

- 50km SLVIA Study Area
- Operational / Under Construction Windfarms

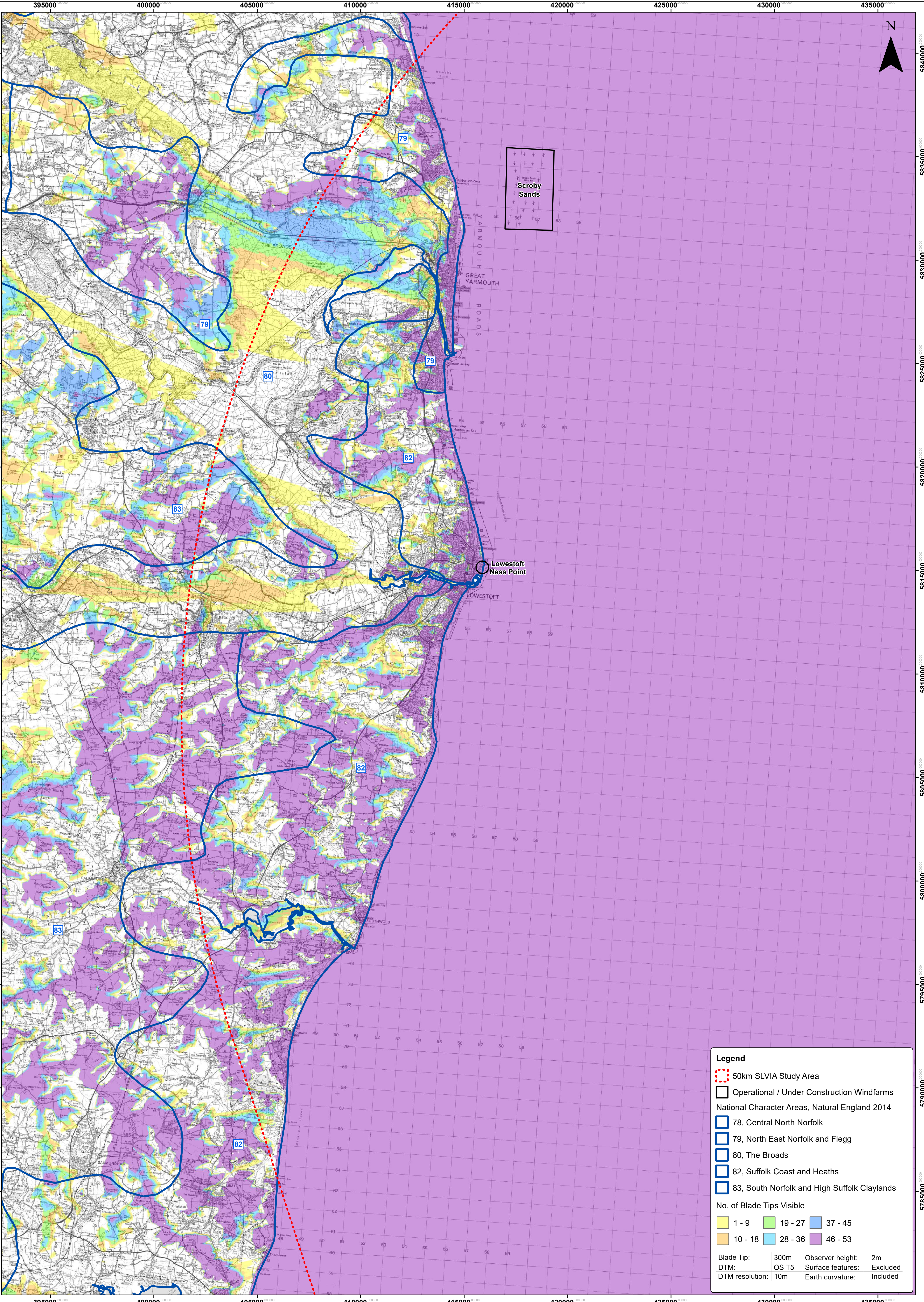
Seascape Character Types
Source: Suffolk, South Norfolk & North Essex Seascape Character Assessment, April 2018

- 1 - Inland Navigable Waters
- 2 - International Ports and Approaches
- 3 - Nearshore Waters
- 4 - Developed Nearshore Waters
- 5 - Coastal Waters
- 6 - Offshore Waters

No. of Blade Tips Visible

 1 - 9	 19 - 27	 37 - 45
 10 - 18	 28 - 36	 46 - 53

Blade Tip:	300m	Observer height:	2m
DTM:	OS T5	Surface features:	Excluded
DTM resolution:	10m	Earth curvature:	Included



Legend

- 50km SLVIA Study Area
- Operational / Under Construction Windfarms

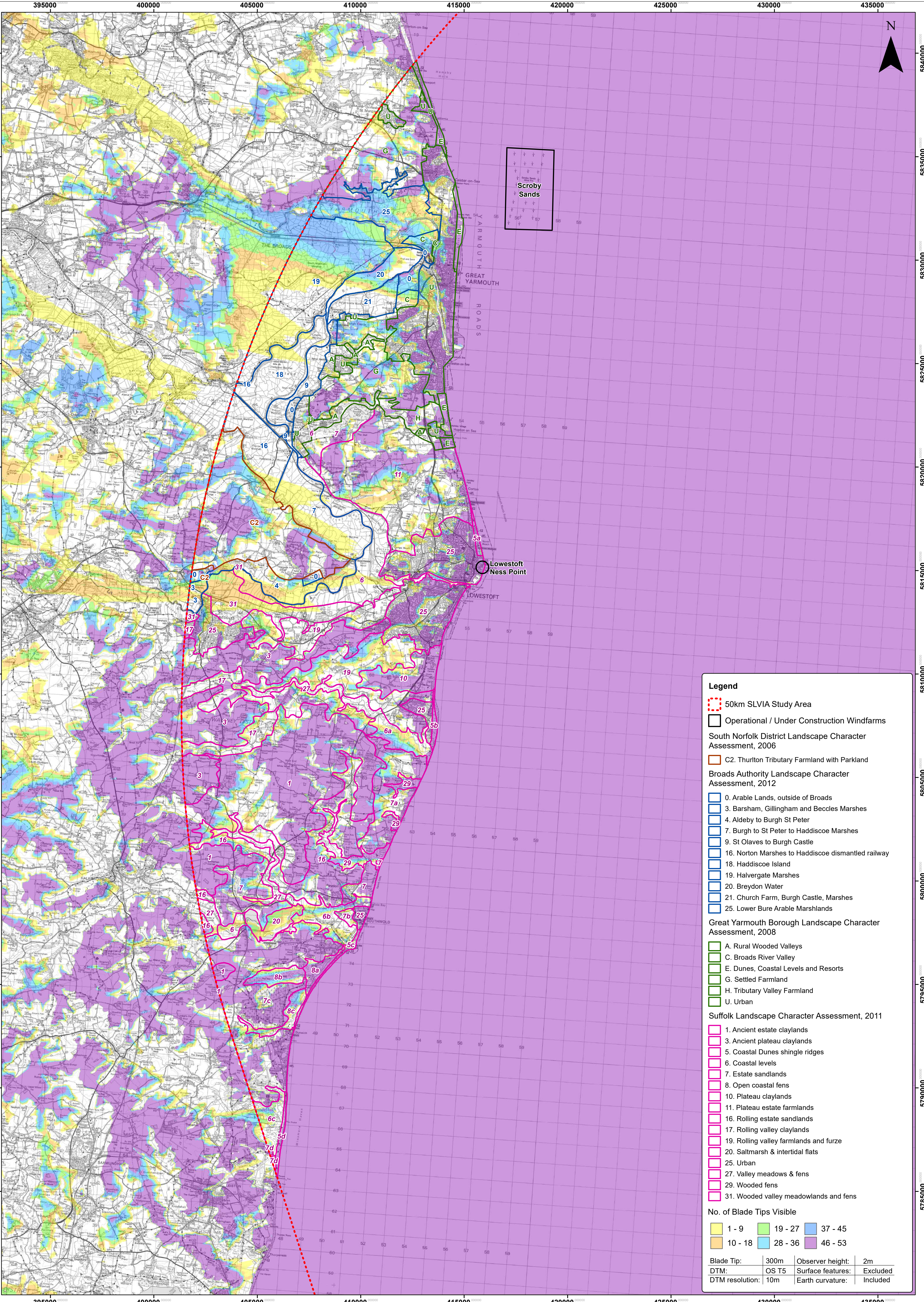
National Character Areas, Natural England 2014

- 78, Central North Norfolk
- 79, North East Norfolk and Flegg
- 80, The Broads
- 82, Suffolk Coast and Heaths
- 83, South Norfolk and High Suffolk Claylands

No. of Blade Tips Visible

	1 - 9		19 - 27		37 - 45
	10 - 18		28 - 36		46 - 53

Blade Tip:	300m	Observer height:	2m
DTM:	OS T5	Surface features:	Excluded
DTM resolution:	10m	Earth curvature:	Included



Legend

- 50km SLVIA Study Area
- Operational / Under Construction Windfarms
- South Norfolk District Landscape Character Assessment, 2006
 - C2. Thuriton Tributary Farmland with Parkland
- Broads Authority Landscape Character Assessment, 2012
 - 0. Arable Lands, outside of Broads
 - 3. Barsham, Gillingham and Beccles Marshes
 - 4. Aldeby to Burgh St Peter
 - 7. Burgh to St Peter to Haddiscoe Marshes
 - 9. St Olaves to Burgh Castle
 - 16. Norton Marshes to Haddiscoe dismantled railway
 - 18. Haddiscoe Island
 - 19. Halvergate Marshes
 - 20. Breydon Water
 - 21. Church Farm, Burgh Castle, Marshes
 - 25. Lower Bure Arable Marshlands
- Great Yarmouth Borough Landscape Character Assessment, 2008
 - A. Rural Wooded Valleys
 - C. Broads River Valley
 - E. Dunes, Coastal Levels and Resorts
 - G. Settled Farmland
 - H. Tributary Valley Farmland
 - U. Urban
- Suffolk Landscape Character Assessment, 2011
 - 1. Ancient estate claylands
 - 3. Ancient plateau claylands
 - 5. Coastal Dunes shingle ridges
 - 6. Coastal levels
 - 7. Estate sandlands
 - 8. Open coastal fens
 - 10. Plateau claylands
 - 11. Plateau estate farmlands
 - 16. Rolling estate sandlands
 - 17. Rolling valley claylands
 - 19. Rolling valley farmlands and furze
 - 20. Saltmarsh & intertidal flats
 - 25. Urban
 - 27. Valley meadows & fens
 - 29. Wooded fens
 - 31. Wooded valley meadowlands and fens
- No. of Blade Tips Visible

	1 - 9		19 - 27		37 - 45
	10 - 18		28 - 36		46 - 53
- Blade Tip: 300m Observer height: 2m
- DTM: OS T5 Surface features: Excluded
- DTM resolution: 10m Earth curvature: Included

3	16/01/2019	TH	Document Reference Update		
2	04/01/2019	TH	Layout Update	Prepared:	TH
1	12/11/2018	LA	Second Issue	Checked:	SM
Rev	Date	By	Comment	Approved:	LT

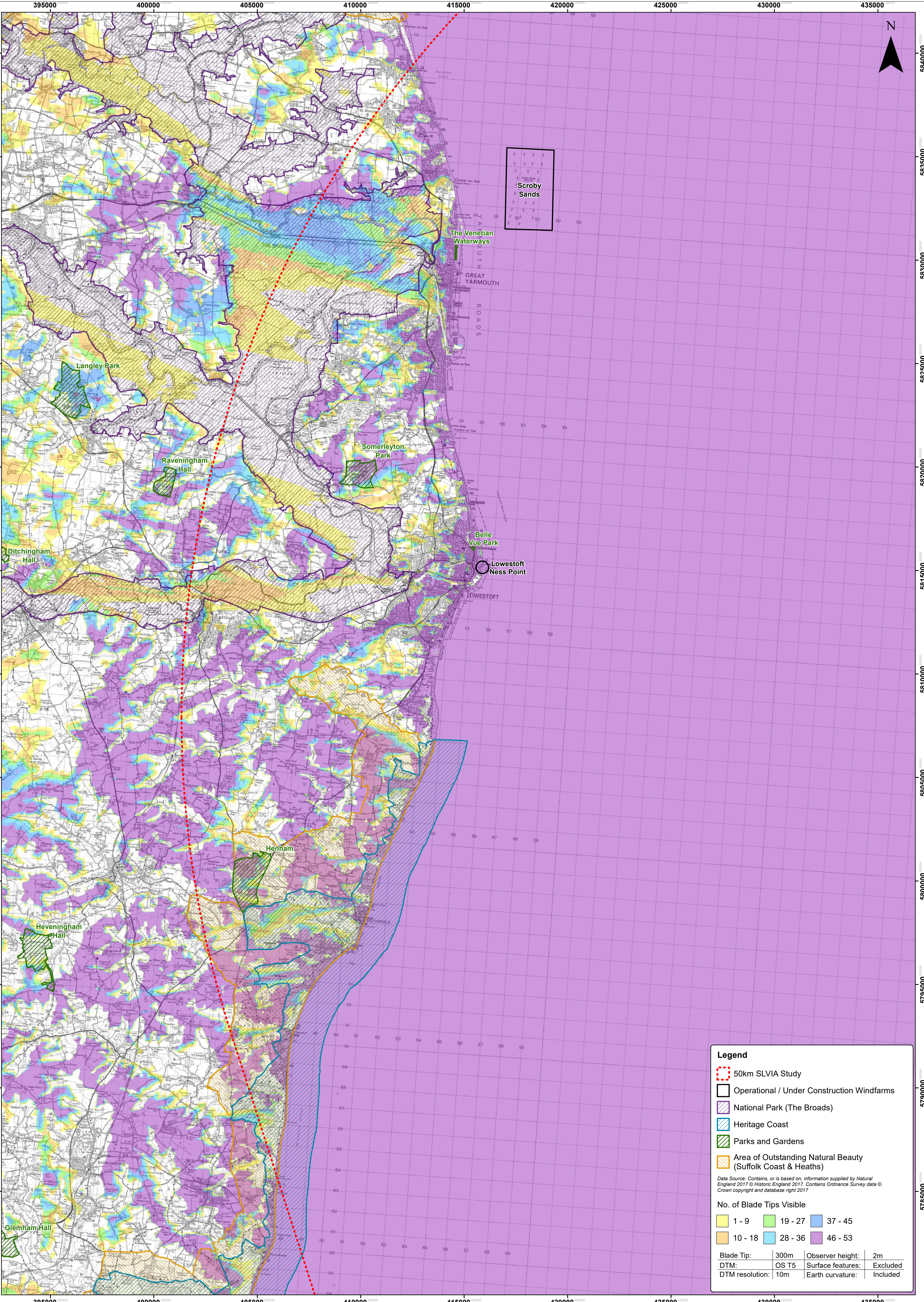
1:80,000 Scale @ A1

0 0.5 1 2 3 4 5 Km

This map has been produced by the latest version information of the time of issue, and has been produced for your information only. Please consult with the SPR Offshore GIS team to ensure the content is still current before using the information contained on this map. To the fullest extent permitted by law, we accept no responsibility or liability (whether in contract, tort (including negligence) or otherwise) in respect of any errors or omissions in the information contained in this map and shall not be liable for any loss, damage or expense caused by such errors or omissions. © Crown Copyright and GeoInformation Ltd. All rights reserved. Product Code: 160119. The product has been derived from data from national sources from the UK Hydrographic Office with the permission of the Controller of Her Majesty's Stationery Office and UK Hydrographic Office. NOT TO BE USED FOR NAVIGATION. Contains Ordnance Survey digital data. © Crown copyright. All rights reserved. 2018 Licence number 100023975.

East Anglia ONE North
 Blade Tip ZTV (300m) with Landscape Character
 (District / County)

Doc Ref	EAIN-DEVWF-ENV-REP-IBR-000297	Datum:	WGS84
Rev	3	Projection:	UTM Z31N
Date	16/01/19		
Figure	28.17		



Legend

- 50km SLVIA Study
- Operational / Under Construction Windfarms
- National Park (The Broads)
- Heritage Coast
- Parks and Gardens
- Area of Outstanding Natural Beauty (Suffolk Coast & Heaths)

Data Source: Contains, or is based on, information supplied by Natural England 2017 © Historic England 2017. Contains Ordnance Survey data © Crown copyright and database right 2017.

No. of Blade Tips Visible

	1 - 9		19 - 27		37 - 45
	10 - 18		28 - 36		46 - 53

Blade Tip:	300m	Observer height:	2m
DTM:	OS T5	Surface features:	Excluded
DTM resolution:	10m	Earth curvature:	Included

	3	16/01/2019	TH	Document Reference Update		
	2	04/01/2019	TH	Layout Update	Prepared:	TH
	1	12/11/2018	LA	Second Issue	Checked:	SM
	Rev	Date	By	Comment	Approved:	LT

1:80,000 Scale @ A1

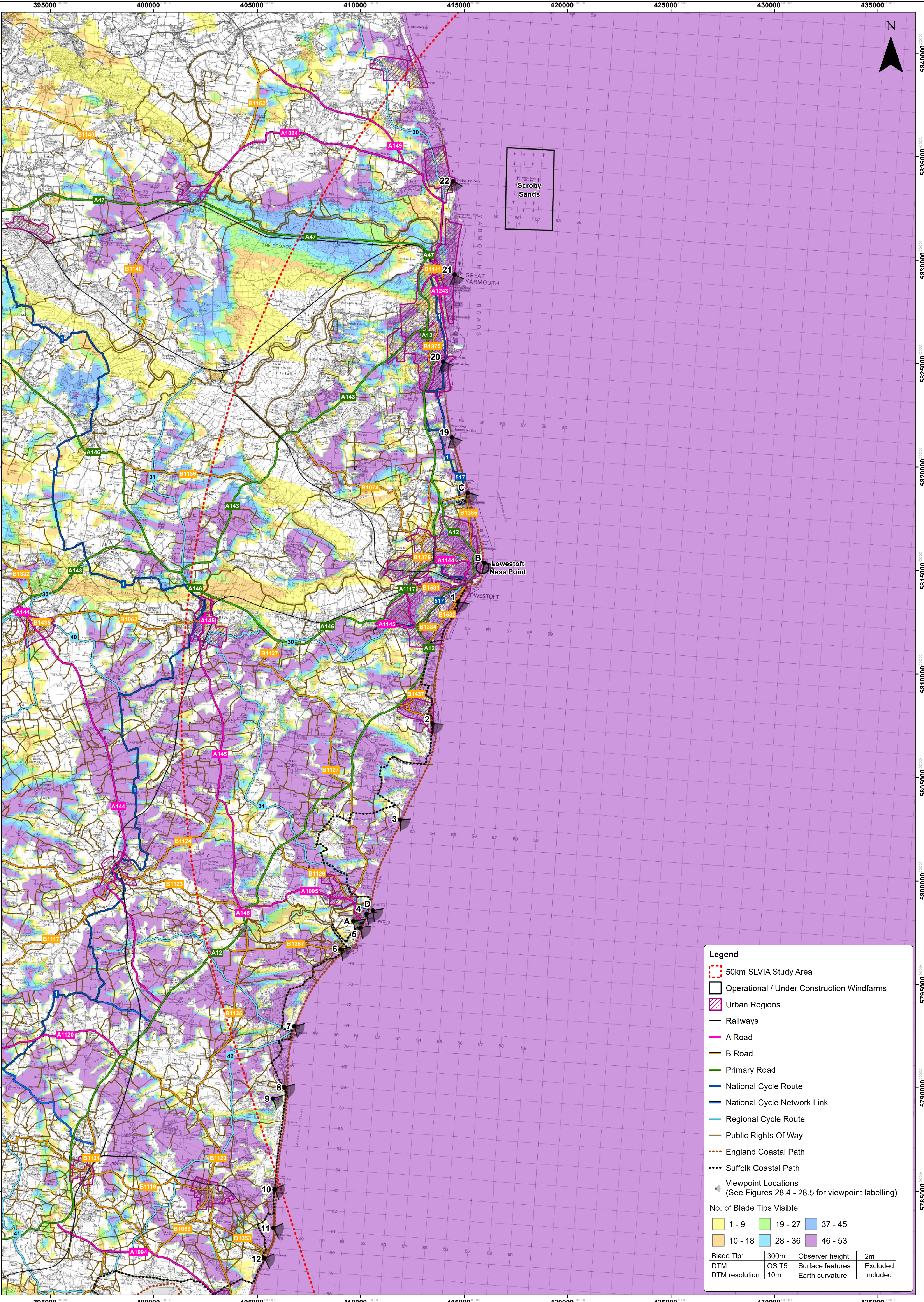
0 0.5 1 2 3 4 5 Km

This map has been produced to the latest available information of the time of issue, and has been produced for your information only. Please consult with the SPR Offshore GIS team to ensure the content is set current before using the information contained on this map. The User accepts and warrants that the information contained in this map and shall not be liable for any loss, damage or expense caused by any errors or omissions. © Crown Copyright and Ordnance Survey Licence All rights reserved. Product Code: 160119. The product has been derived from data supplied by the Ordnance Survey, OS with the permission of the Controller of Her Majesty's Stationery Office and UK Hydrographic Office. NOT TO BE USED FOR NAVIGATION. Contains Ordnance Survey digital data. © Crown copyright. All rights reserved. OS Licence number 010021975.

East Anglia ONE North

Blade Tip ZTV (300m) with Landscape Designations

Doc Ref	EAIN-DEVWF-ENV-REP-IBR-000297	Datum:	WGS84
Rev	3	Projection:	UTM Z31N
Date	16/01/19		
Figure	28.18		



Legend

- 50km SLVIA Study Area
- Operational / Under Construction Windfarms
- Urban Regions
- Railways
- A Road
- B Road
- Primary Road
- National Cycle Route
- National Cycle Network Link
- Regional Cycle Route
- Public Rights Of Way
- England Coastal Path
- Suffolk Coastal Path
- Viewpoint Locations
(See Figures 28.4 - 28.5 for viewpoint labelling)

No. of Blade Tips Visible

	1 - 9		19 - 27		37 - 45
	10 - 18		28 - 36		46 - 53

Blade Tip:	300m	Observer height:	2m
DTM:	OS T5	Surface features:	Excluded
DTM resolution:	10m	Earth curvature:	Included