



**SCOTTISHPOWER
RENEWABLES**

East Anglia ONE North Offshore Windfarm

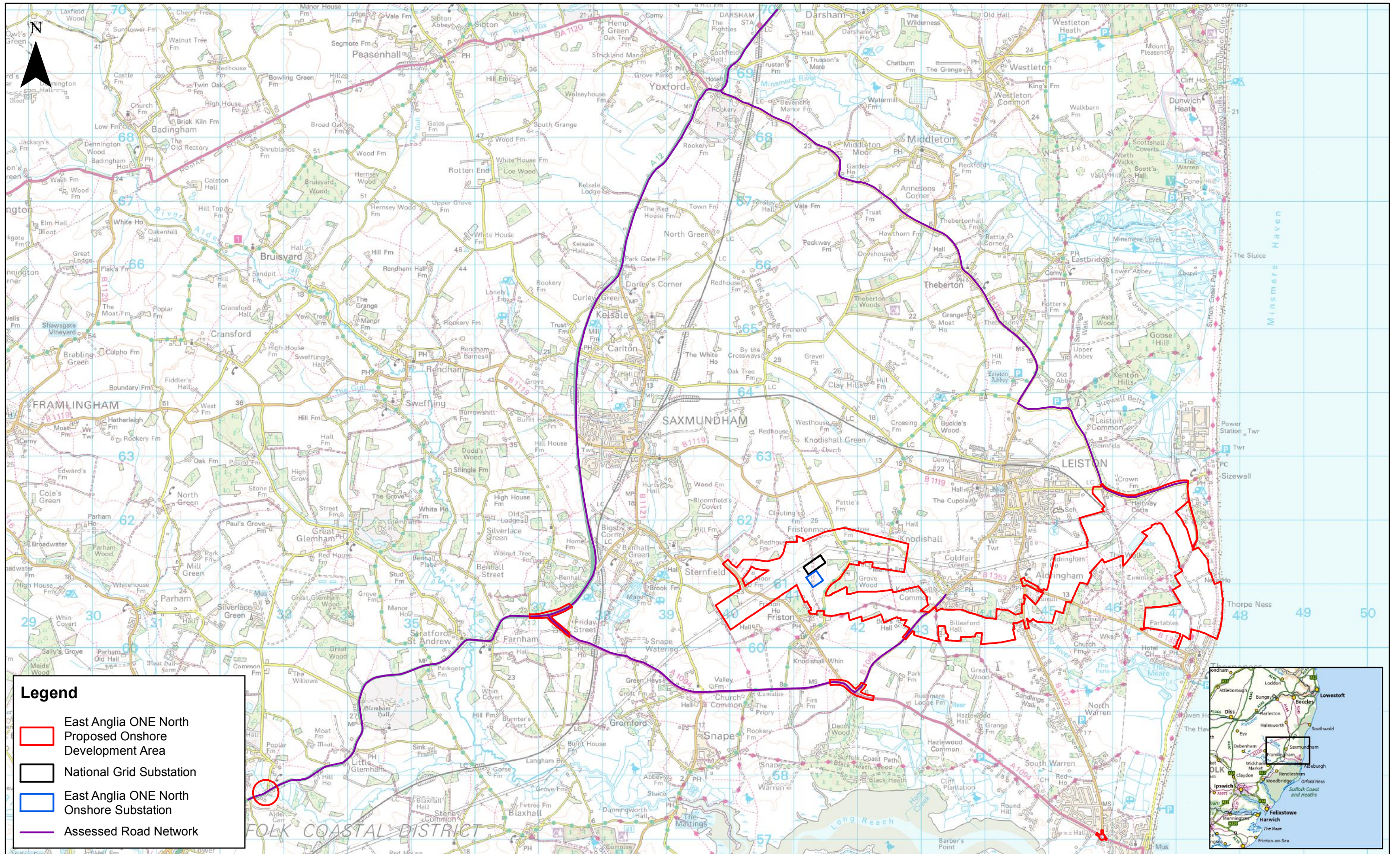
Chapter 19

Air Quality

Figures

**Preliminary Environmental Information
Volume 2**

This page is intentionally blank



Legend

- East Anglia ONE North Proposed Onshore Development Area
- National Grid Substation
- East Anglia ONE North Onshore Substation
- Assessed Road Network



Rev	Date	By	Comment
1	22/11/2018	AB	First Issue.

Prepared:	AB
Checked:	CG
Approved:	AH

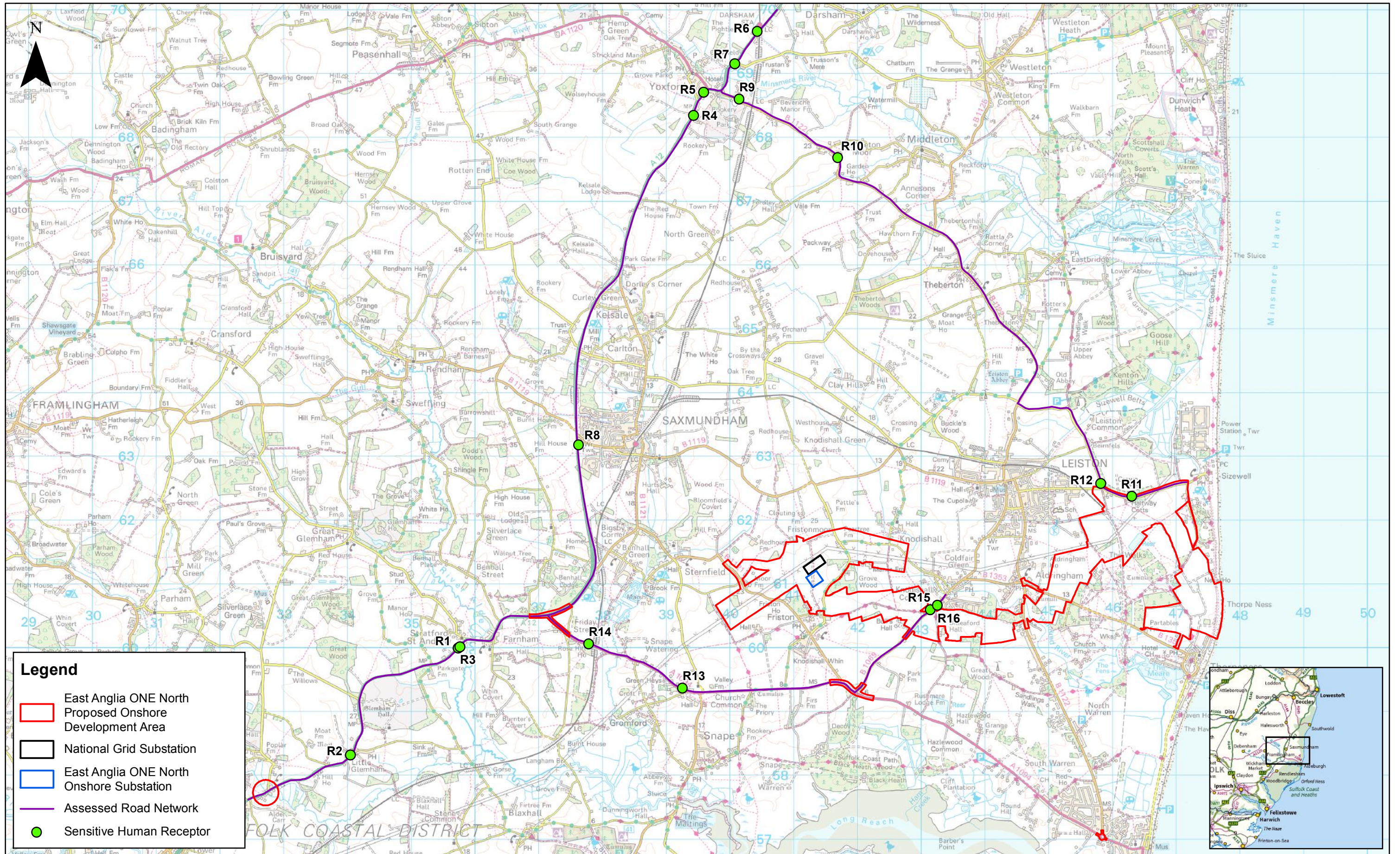
1:55,000
Scale @ A3

East Anglia ONE North

Air Quality Study Area

Drg No	EA1N-DEV-DRG-IBR-000392
Rev	1
Date	22/11/18
Figure	19.1

Coordinate System: BNG
Datum: OSG36



Legend

- East Anglia ONE North Proposed Onshore Development Area
- National Grid Substation
- East Anglia ONE North Onshore Substation
- Assessed Road Network
- Sensitive Human Receptor



Rev	Date	By	Comment
1	22/11/2018	AB	First Issue.

Prepared:	AB
Checked:	CG
Approved:	AH

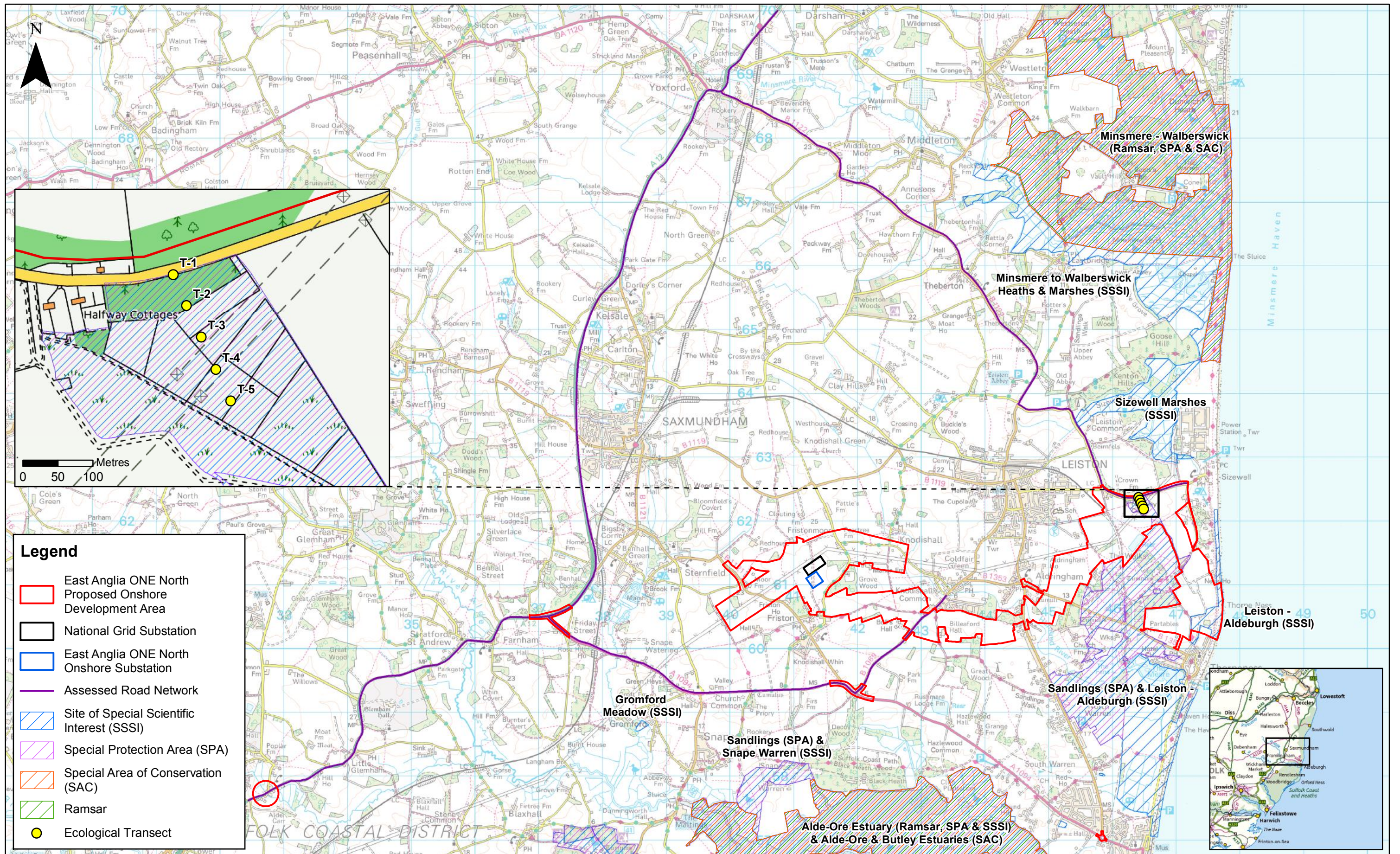
1:55,000
Scale @ A3

Source: © Crown copyright and database rights 2018. Ordnance Survey 0100031673.
This map has been produced to the latest known information at the time of issue, and has been produced for your information only. Please consult with the SPR Offshore GIS team to ensure the content is still current before using the information contained on this map. To the fullest extent permitted by law, we accept no responsibility or liability (whether in contract, tort (including negligence) or otherwise) in respect of any errors or omissions in the information contained in the map and shall not be liable for any loss, damage or expense caused by such errors or omissions.

East Anglia ONE North

Sensitive Human Receptors

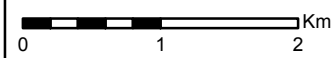
Drg No	EA1N-DEV-DRG-IBR-000393	Coordinate System:	BNG
Rev	1	Datum:	OSGB36
Date	22/11/18		
Figure	19.2		



Rev	Date	By	Comment
1	22/11/2018	AB	First Issue.

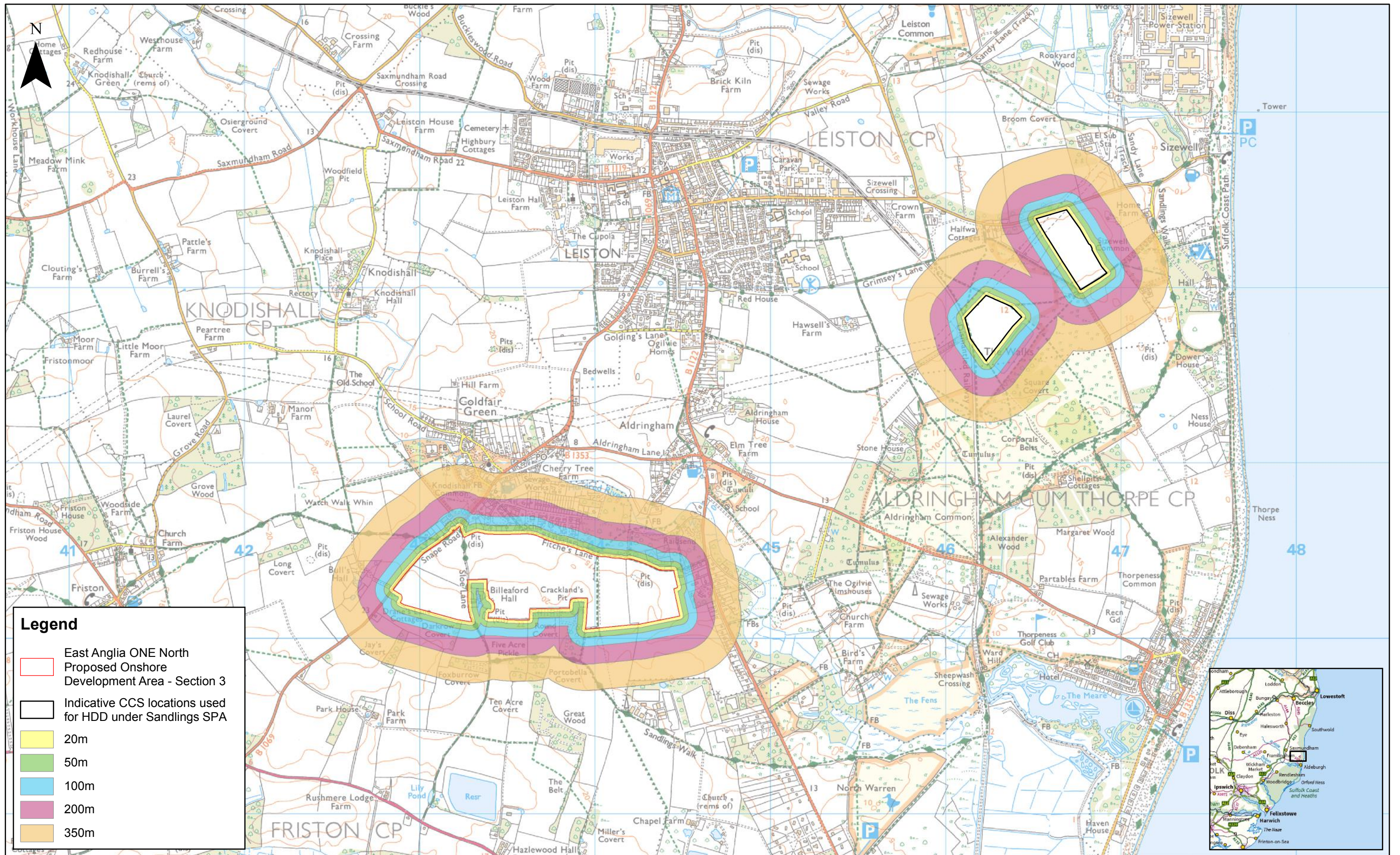
Prepared:	AB
Checked:	CG
Approved:	AH

1:55,000
Scale @ A3



East Anglia ONE North Sensitive Ecological Receptors

Drg No	EA1N-DEV-DRG-IBR-000394	
Rev	1	Coordinate System: BNG
Date	22/11/18	Datum: OSGB36
Figure	19.3	



Legend

- East Anglia ONE North Proposed Onshore Development Area - Section 3
- Indicative CCS locations used for HDD under Sandlings SPA
- 20m
- 50m
- 100m
- 200m
- 350m



Rev	Date	By	Comment
1	22/11/2018	AB	First Issue.

Prepared: AB
 Checked: CG
 Approved: AH

Scale @ A3
 1:20,000
 0 0.5 1 Km

Source: © Crown copyright and database rights 2018. Ordnance Survey 0100031673.
 This map has been produced to the latest known information at the time of issue, and has been produced for your information only. Please consult with the SPR Offshore GIS team to ensure the content is still current before using the information contained on this map. To the fullest extent permitted by law, we accept no responsibility or liability (whether in contract, tort (including negligence) or otherwise in respect of any errors or omissions in the information contained in the map and shall not be liable for any loss, damage or expense caused by such errors or omissions.

East Anglia ONE North

Construction Phase Dust Distance Boundaries

Drg No	EA1N-DEV-DRG-IBR-000395
Rev	1
Date	22/11/18
Figure	19.4
Coordinate System:	BNG
Datum:	OSGB36