



**SCOTTISHPOWER
RENEWABLES**

East Anglia ONE North Offshore Windfarm

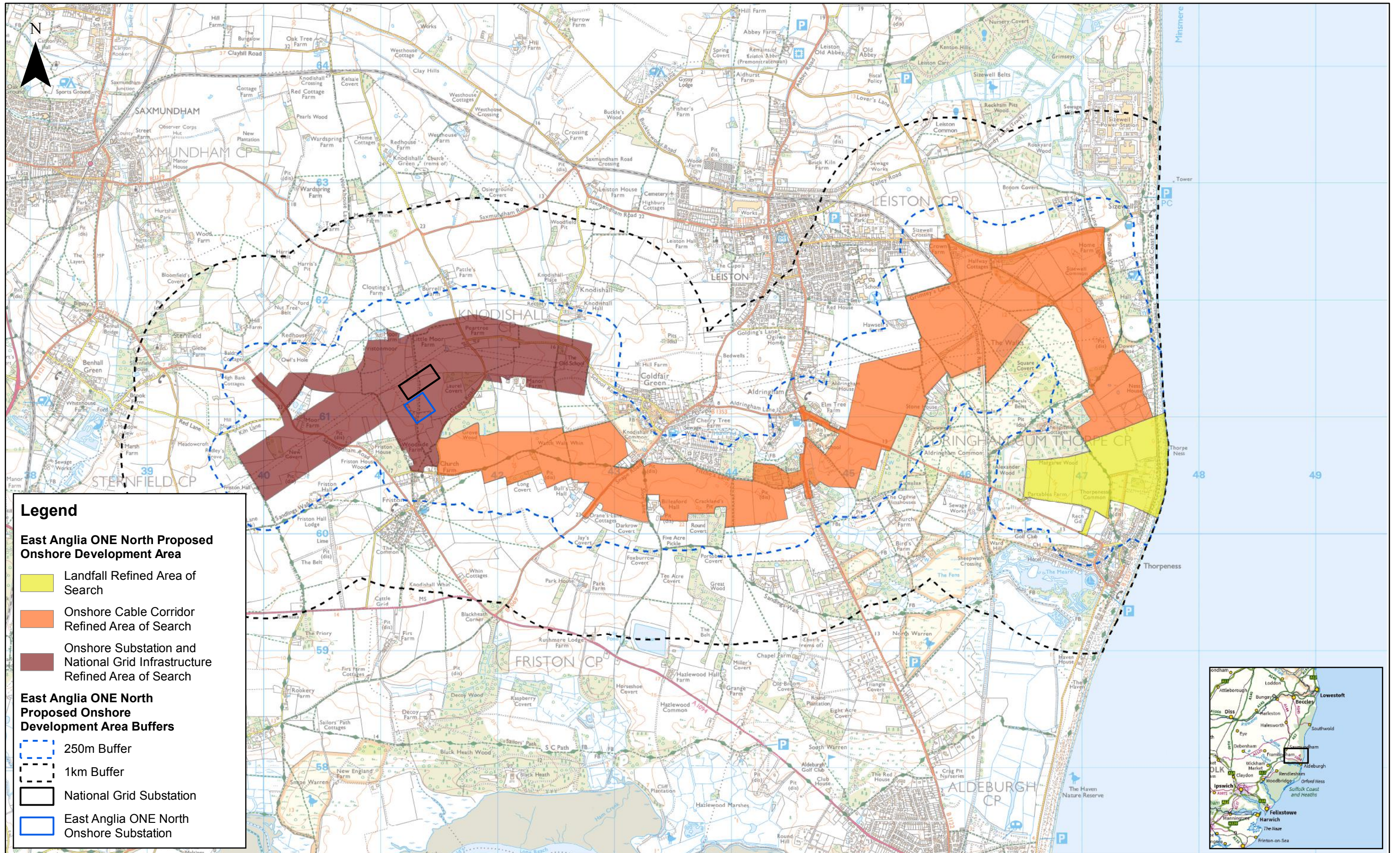
Chapter 18

Ground Conditions and Contamination

Figures

Preliminary Environmental Information
Volume 2

This page is intentionally blank



Legend

East Anglia ONE North Proposed Onshore Development Area

- Landfall Refined Area of Search
- Onshore Cable Corridor Refined Area of Search
- Onshore Substation and National Grid Infrastructure Refined Area of Search

East Anglia ONE North Proposed Onshore Development Area Buffers

- 250m Buffer
- 1km Buffer
- National Grid Substation
- East Anglia ONE North Onshore Substation

			
1	16/11/2018	FC	First Issue.
Rev	Date	By	Comment

Prepared:	FC
Checked:	PG
Approved:	AH

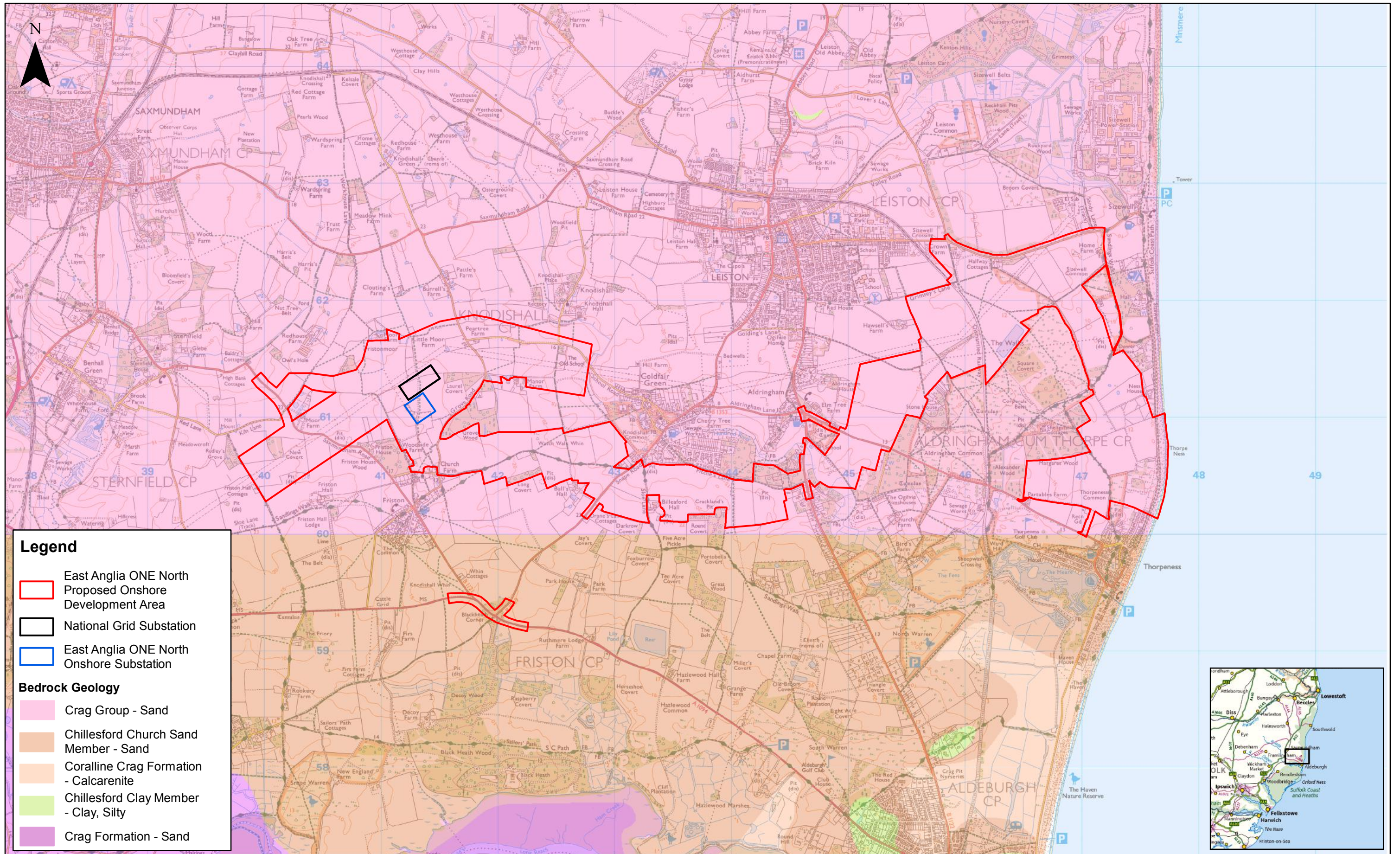
1:30,000
Scale @ A3

0 0.5 1 Km

Source: © Crown copyright and database rights 2018. Ordnance Survey 0100031673.
This map has been produced to the latest known information at the time of issue, and has been produced for your information only. Please consult with the SPR Offshore GIS team to ensure the content is still current before using the information contained on this map. To the fullest extent permitted by law, we accept no responsibility or liability (whether in contract, tort (including negligence) or otherwise in respect of any errors or omissions in the information contained in the map and shall not be liable for any loss, damage or expense caused by such errors or omissions.

East Anglia ONE North
Study Area

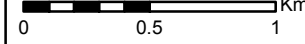
Drg No	EA1N-DEV-DRG-IBR-000299
Rev	1
Date	16/11/18
Figure	18.1
Coordinate System:	BNG
Datum:	OSGB36



1	16/11/2018	FC	First Issue.
Rev	Date	By	Comment

Prepared:	FC
Checked:	PG
Approved:	AH

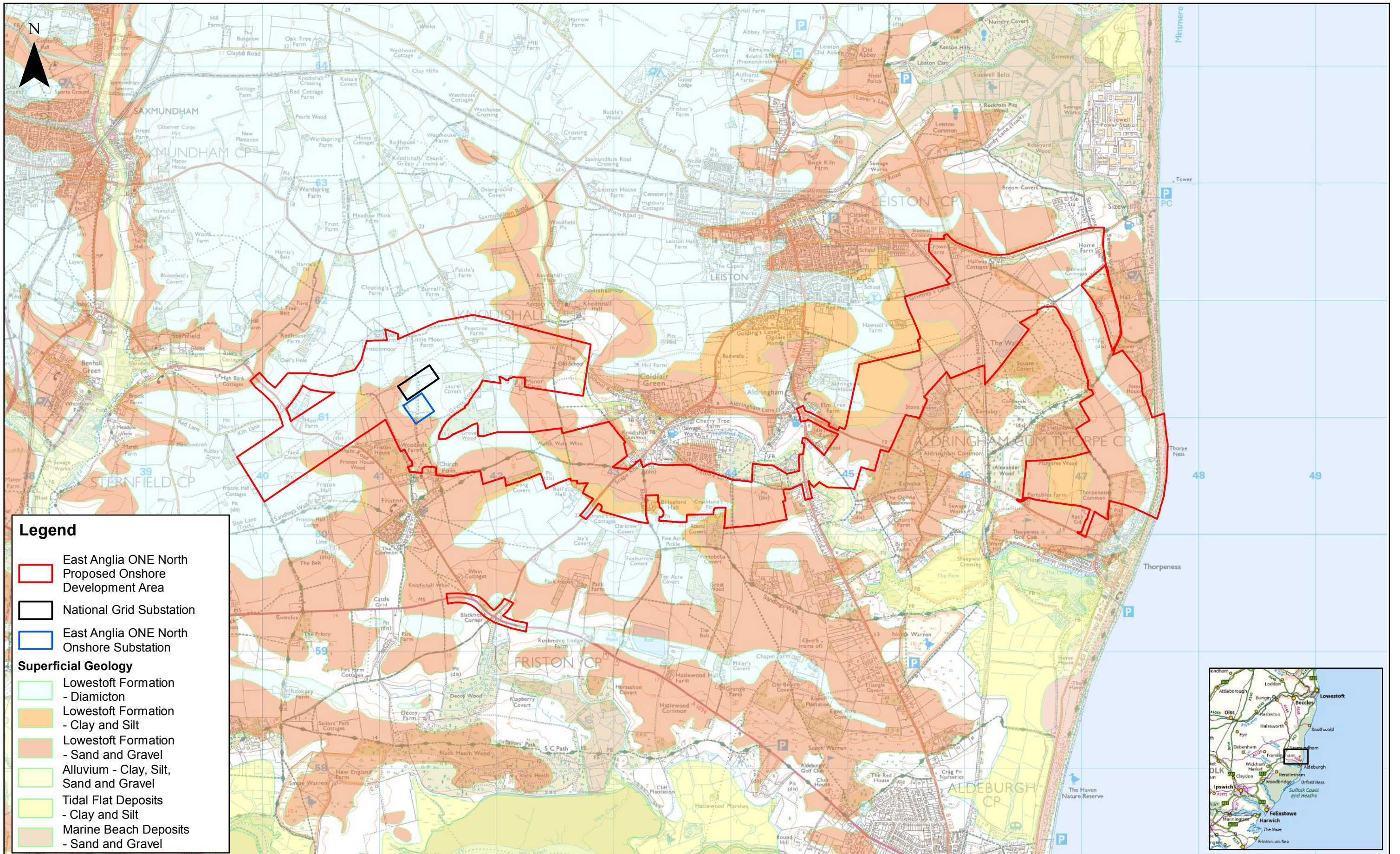
1:30,000
Scale @ A3



Source: © British Geological Survey, 2018. © Crown copyright and database rights 2018. Ordnance Survey 0100031673.
This map has been produced to the latest known information at the time of issue, and has been produced for your information only. Please consult with the SPR Offshore GIS team to ensure the content is still current before using the information contained on this map. To the fullest extent permitted by law, we accept no responsibility or liability (whether in contract, tort (including negligence) or otherwise in respect of any errors or omissions in the information contained in the map and shall not be liable for any loss, damage or expense caused by such errors or omissions.

East Anglia ONE North Bedrock Geology

Drg No	EA1N-DEV-DRG-IBR-000300
Rev	1
Date	16/11/18
Figure	18.2
Coordinate System:	BNG
Datum:	OSGB36



Legend

- East Anglia ONE North Proposed Onshore Development Area
- National Grid Substation
- East Anglia ONE North Onshore Substation

Superficial Geology

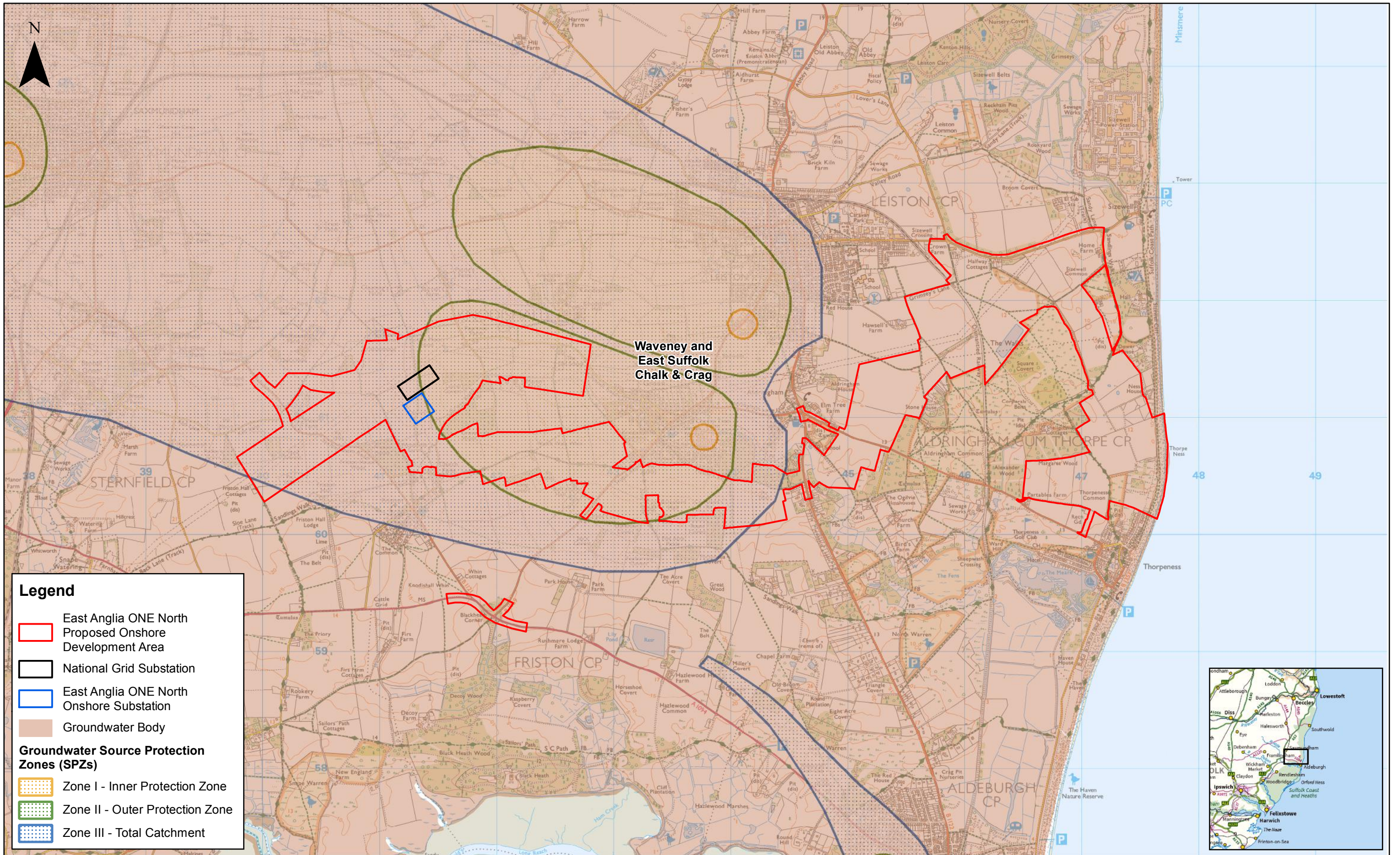
- Lowestoft Formation - Diamicton
- Lowestoft Formation - Clay and Silt
- Lowestoft Formation - Sand and Gravel
- Alluvium - Clay, Silt, Sand and Gravel
- Tidal Flat Deposits - Clay and Silt
- Marine Beach Deposits - Sand and Gravel



				1:30,000		Scale @ A3		0 0.5 1 Km	
				Prepared:	FC				
1 16/11/2018 FC First Issue.				Checked:	PG	Source: © British Geological Survey, 2018. © Crown copyright and database rights 2018. Ordnance Survey 0100031673.			
				Approved:	AH	This map has been produced to the latest known information at the time of issue, and has been produced for your information only. Please consult with the SPR Offshore GIS team to ensure the content is still current before using the information contained on this map. To the fullest extent permitted by law, we accept no responsibility or liability (whether in contract, tort (including negligence) or otherwise) in respect of any errors or omissions in the information contained in the map and shall not be liable for any loss, damage or expense caused by such errors or omissions.			
Rev	Date	By	Comment	Approved:					

East Anglia ONE North
Superficial Geology

Drg No	EA1N-DEV-DRG-IBR-000301	
Rev	1	Coordinate System: BNG
Date	16/11/18	Datum: OSGB36
Figure	18.3	



Legend

- East Anglia ONE North Proposed Onshore Development Area
- National Grid Substation
- East Anglia ONE North Onshore Substation
- Groundwater Body

Groundwater Source Protection Zones (SPZs)

- Zone I - Inner Protection Zone
- Zone II - Outer Protection Zone
- Zone III - Total Catchment

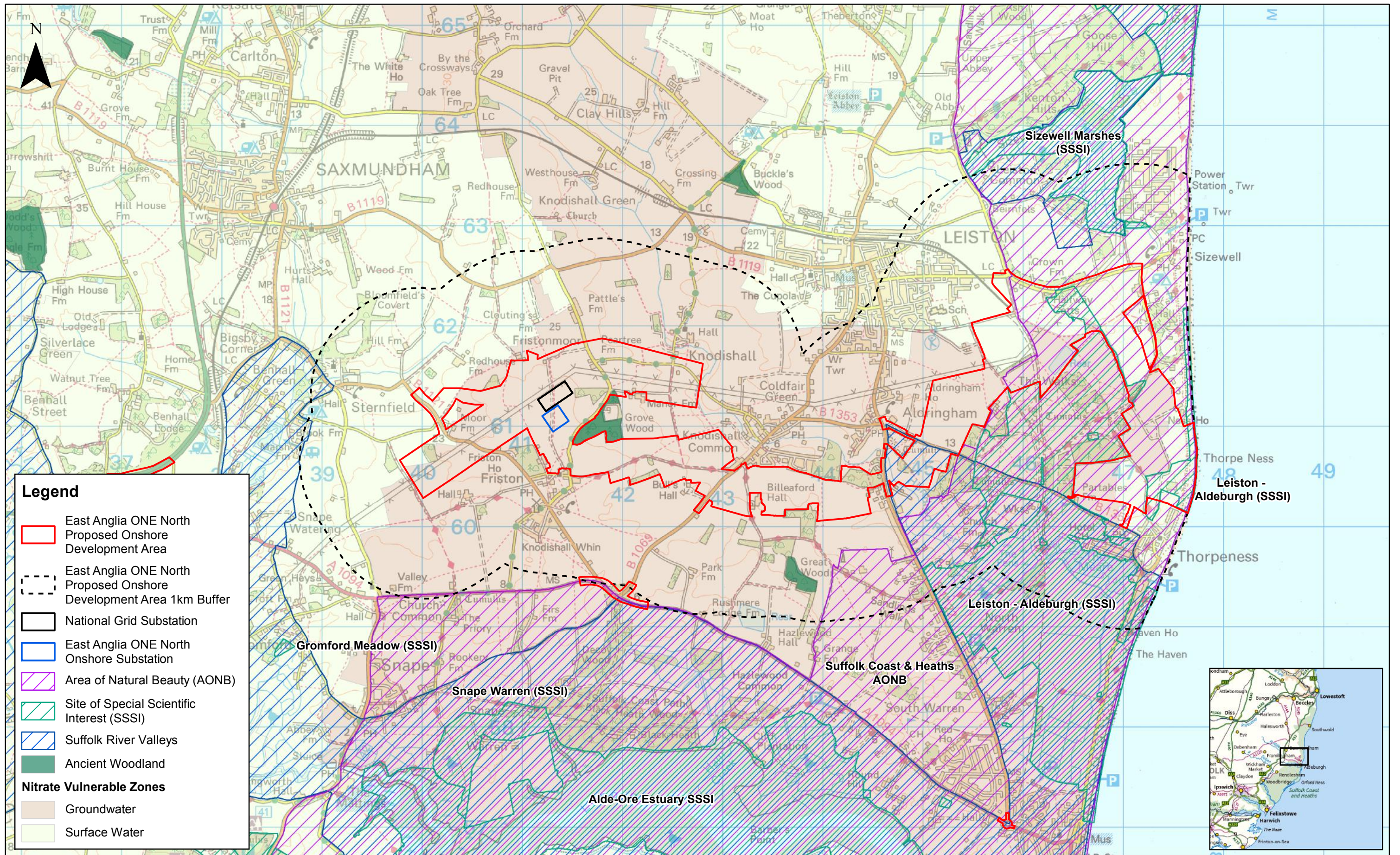


1	16/11/2018	FC	First Issue.
Rev	Date	By	Comment

Prepared:	FC	Scale @ A3	1:30,000
Checked:	PG		
Approved:	AH	<small>Source: © Environment Agency, 2018. © Crown copyright and database rights 2018. Ordnance Survey 0100031673. This map has been produced to the latest known information at the time of issue, and has been produced for your information only. Please consult with the SPR Offshore GIS team to ensure the content is still current before using the information contained on this map. To the fullest extent permitted by law, we accept no responsibility or liability (whether in contract, tort (including negligence) or otherwise in respect of any errors or omissions in the information contained in the map and shall not be liable for any loss, damage or expense caused by such errors or omissions.</small>	

East Anglia ONE North Groundwater Receptors

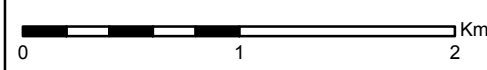
Drg No	EA1N-DEV-DRG-IBR-000302	
Rev	1	Coordinate System: BNG
Date	16/11/18	Datum: OSGB36
Figure	18.4	



1	16/11/2018	FC	First Issue.
Rev	Date	By	Comment

Prepared:	FC
Checked:	PG
Approved:	AH

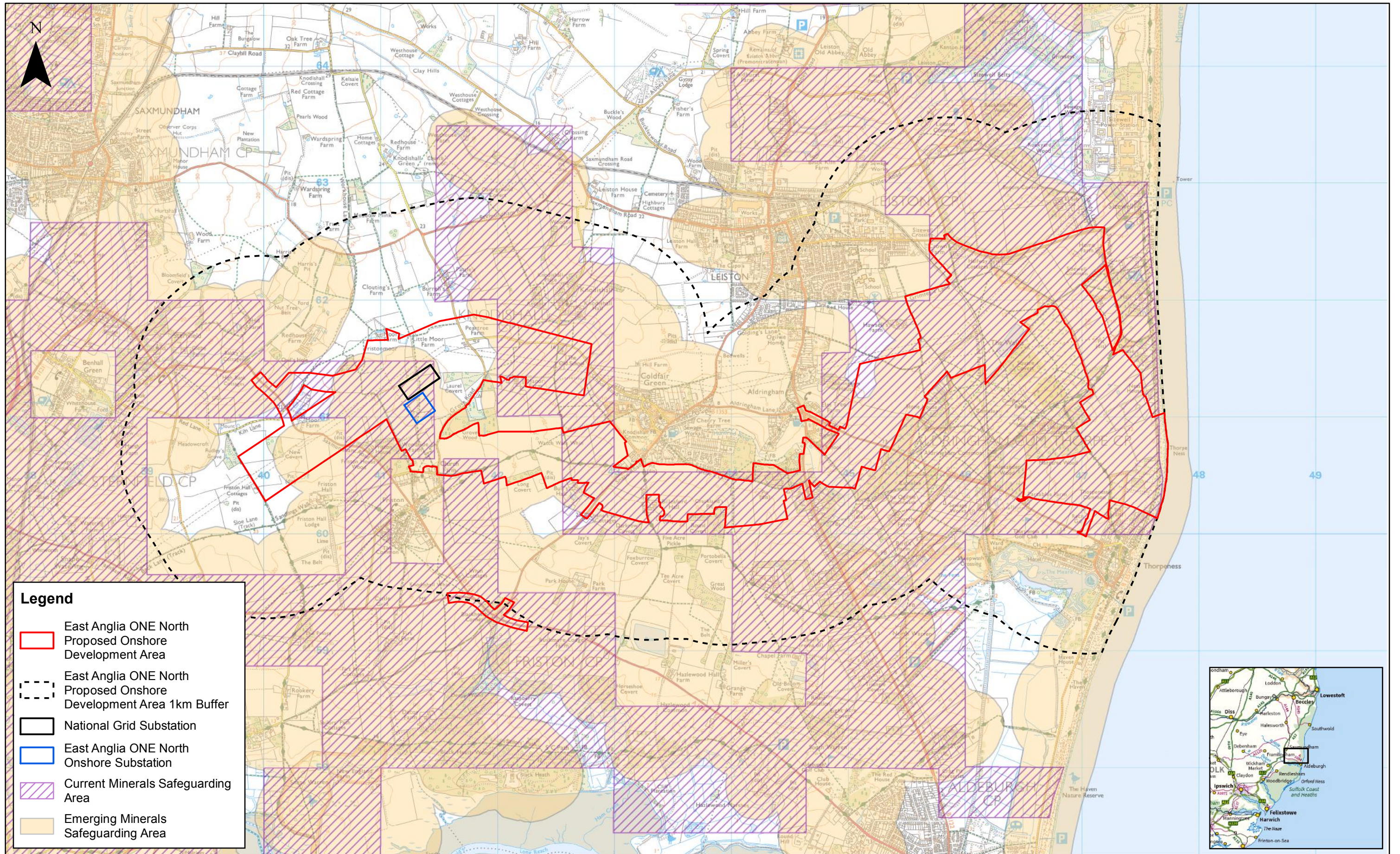
1:35,000
Scale @ A3



Source: © Natural England, 2018. © Crown copyright and database rights 2018. Ordnance Survey 0100031673.
This map has been produced to the latest known information at the time of issue, and has been produced for your information only. Please consult with the SPR Offshore GIS team to ensure the content is still current before using the information contained on this map. To the fullest extent permitted by law, we accept no responsibility or liability (whether in contract, tort (including negligence) or otherwise in respect of any errors or omissions in the information contained in the map and shall not be liable for any loss, damage or expense caused by such errors or omissions.

East Anglia ONE North Sensitive Land Uses

Drg No	EA1N-DEV-DRG-IBR-000303	Coordinate System:	BNG
Rev	1	Datum:	OSGB36
Date	16/11/18		
Figure	18.5		



Legend

- East Anglia ONE North Proposed Onshore Development Area
- East Anglia ONE North Proposed Onshore Development Area 1km Buffer
- National Grid Substation
- East Anglia ONE North Onshore Substation
- Current Minerals Safeguarding Area
- Emerging Minerals Safeguarding Area



Rev	Date	By	Comment
1	16/11/2018	FC	First Issue.

Prepared:	FC
Checked:	PG
Approved:	AH

1:30,000
Scale @ A3

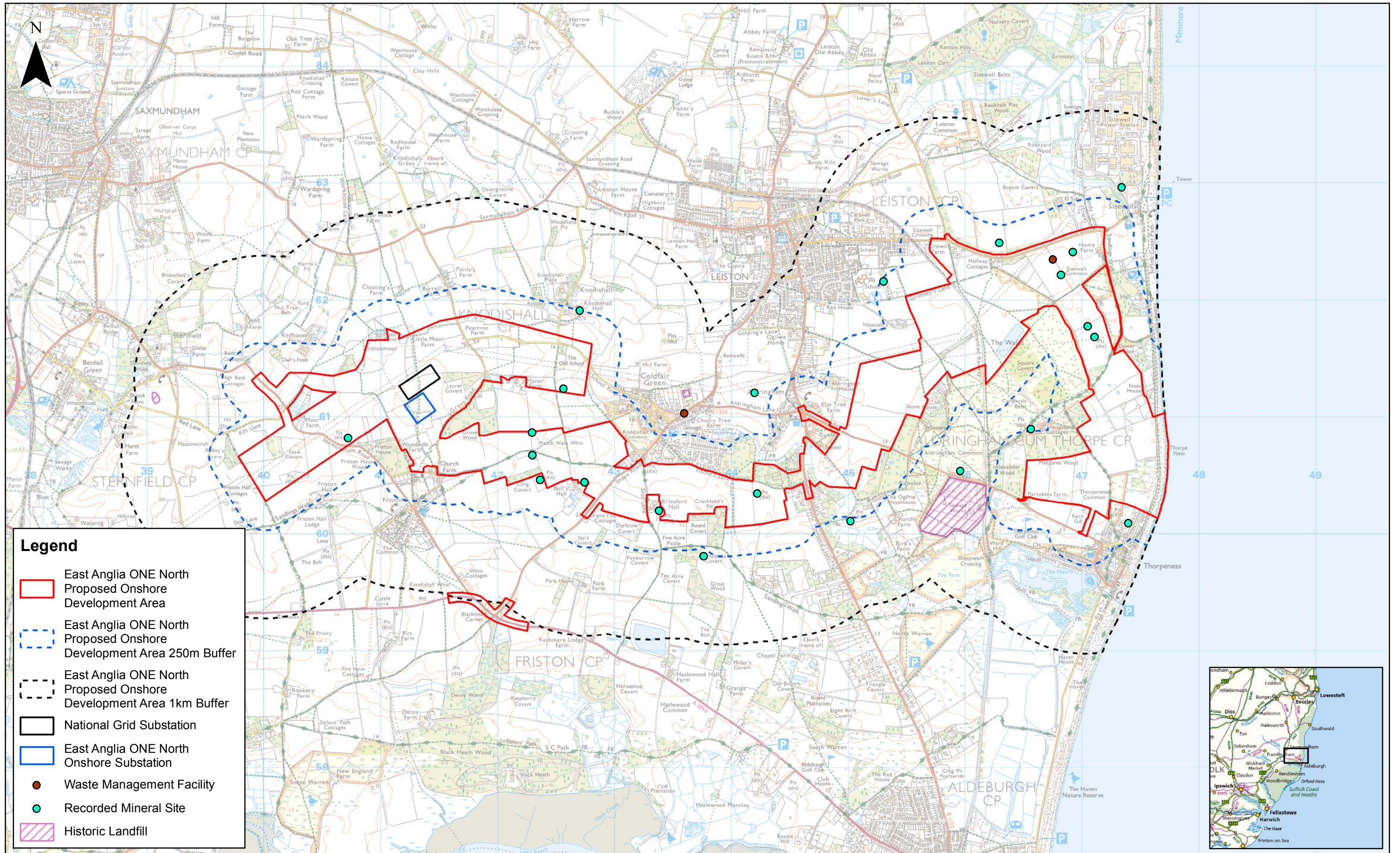
0 0.5 1 Km

East Anglia ONE North Minerals Safeguarding Area



Drg No	EA1N-DEV-DRG-IBR-000304
Rev	1
Date	16/11/18
Figure	18.6

Coordinate System:
BNG
Datum:
OSGB36



Legend

- East Anglia ONE North Proposed Onshore Development Area
- East Anglia ONE North Proposed Onshore Development Area 250m Buffer
- East Anglia ONE North Proposed Onshore Development Area 1km Buffer
- National Grid Substation
- East Anglia ONE North Onshore Substation
- Waste Management Facility
- Recorded Mineral Site
- Historic Landfill

1	16/11/2018	FC	First Issue.
Rev	Date	By	Comment

1:30,000
Scale @ A3

0 0.5 1 Km

Prepared: FC
Checked: PG
Approved: AH

Source: © British Geological Survey, 2018. © Crown copyright and database rights 2018. Ordnance Survey 0100031673.
This map has been produced to the latest known information at the time of issue, and has been produced for your information only. Please consult with the SPR Offshore GIS team to ensure the content is still current before using the information contained on this map. To the fullest extent permitted by law, we accept no responsibility or liability (whether in contract, tort (including negligence) or otherwise in respect of any errors or omissions in the information contained in the map and shall not be liable for any loss, damage or expense caused by such errors or omissions.

East Anglia ONE North
Potential Contamination Sources

Drg No	EA1N-DEV-DRG-IBR-000305
Rev	1
Date	16/11/18
Figure	18.7
Coordinate System:	BNG
Datum:	OSGB36

This page is intentionally blank