



**SCOTTISHPOWER
RENEWABLES**

East Anglia ONE North Offshore Windfarm

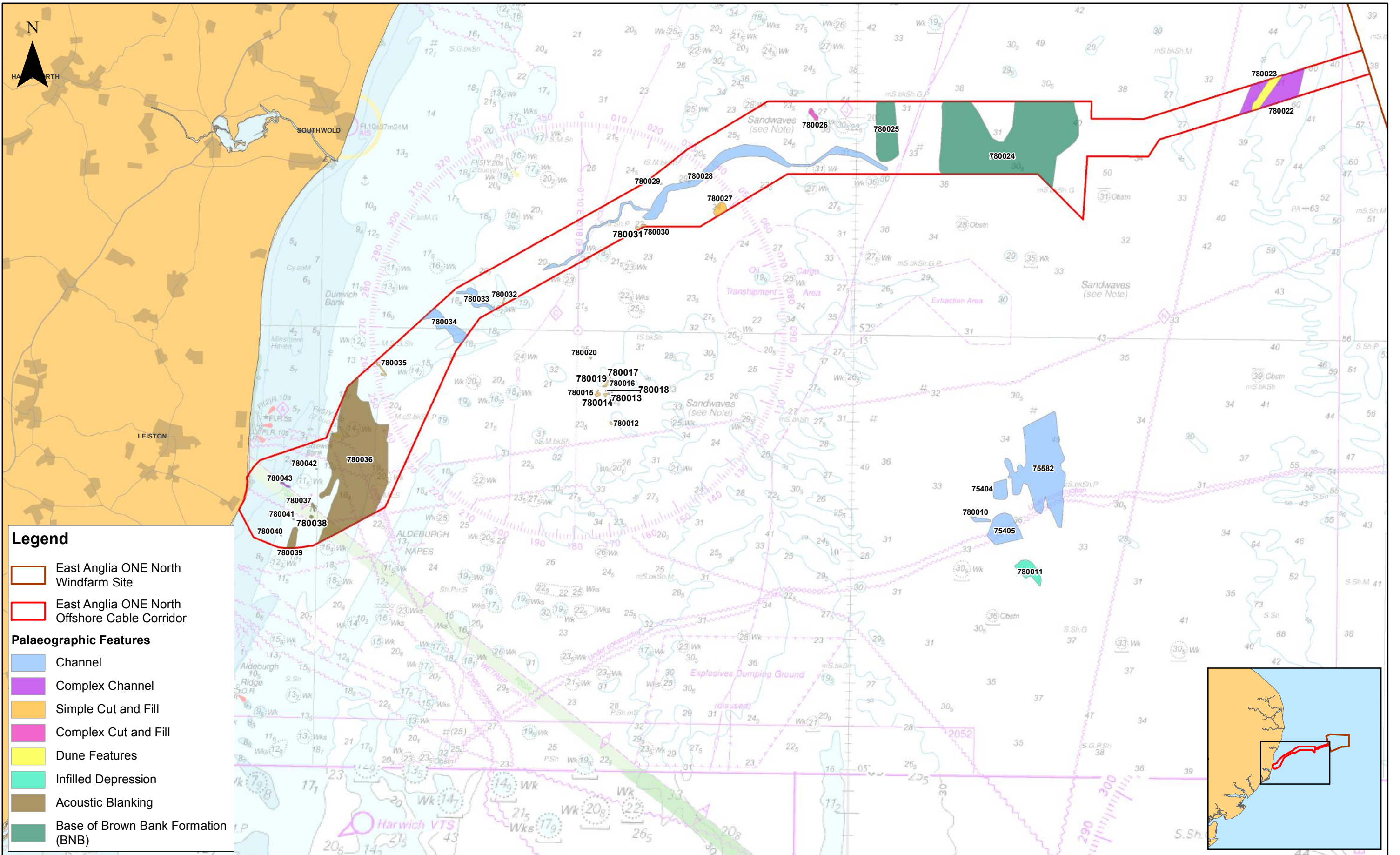
Chapter 16

**Marine Archaeology and Cultural
Heritage**

Figures

Preliminary Environmental Information
Volume 2

This page is intentionally blank



Legend

- East Anglia ONE North Windfarm Site
- East Anglia ONE North Offshore Cable Corridor

Palaeographic Features

- Channel
- Complex Channel
- Simple Cut and Fill
- Complex Cut and Fill
- Dune Features
- Infilled Depression
- Acoustic Blanking
- Base of Brown Bank Formation (BNB)

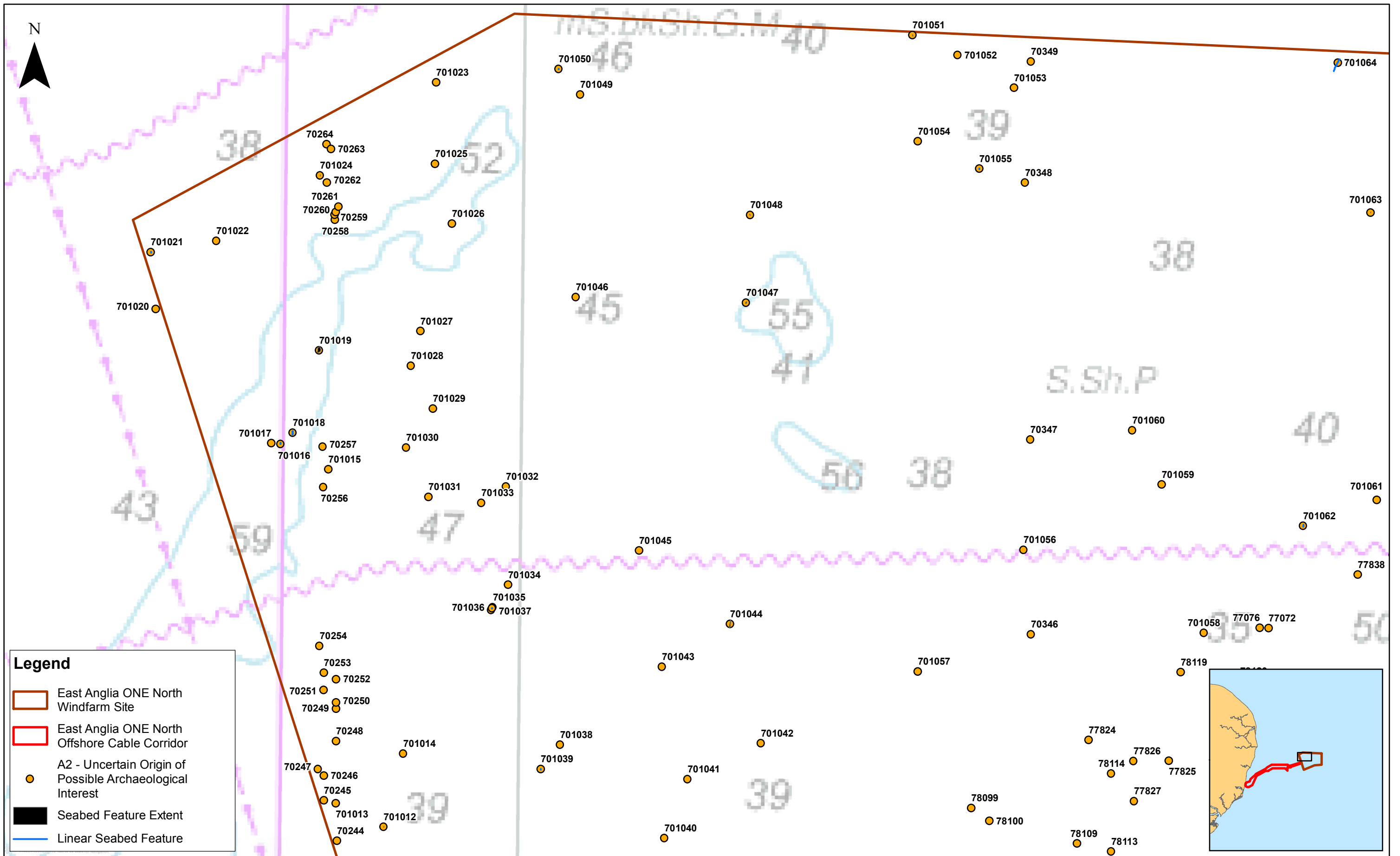


1	28/11/2018	FC	First Issue.	Prepared:	FC
Rev	Date	By	Comment	Checked:	VC
				Approved:	PP

1:150,000	Scale @ A3	0	2	4	8	Km
<small>Source: © Wessex Archaeology, 2018. © The Crown Estate, 2018. Charts from MarineFIND.co.uk Licence No EK001-0645-MF0095. Not to be used for navigation. This map has been produced to the latest known information at the time of issue, and has been produced for your information only. Please consult with the SPR Offshore GIS team to ensure the content is still current before using the information contained on this map. To the fullest extent permitted by law, we accept no responsibility or liability (whether in contract, tort (including negligence) or otherwise in respect of any errors or omissions in the information contained in the map and shall not be liable for any loss, damage or expense caused by such errors or omissions.</small>						

East Anglia ONE North
 Palaeographic Features of Archaeological
 Potential (East Anglia ONE North Offshore
 Cable Corridor)

Drg No	EA1N-DEV-DRG-IBR-000460	Datum: WGS 1984 Projection: Zone 31N
Rev	1	
Date	28/11/18	
Figure	16.2	



Legend

- East Anglia ONE North Windfarm Site
- East Anglia ONE North Offshore Cable Corridor
- A2 - Uncertain Origin of Possible Archaeological Interest
- Seabed Feature Extent
- Linear Seabed Feature



Rev	Date	By	Comment	Approved:
1	30/11/2018	FC	First Issue.	VC

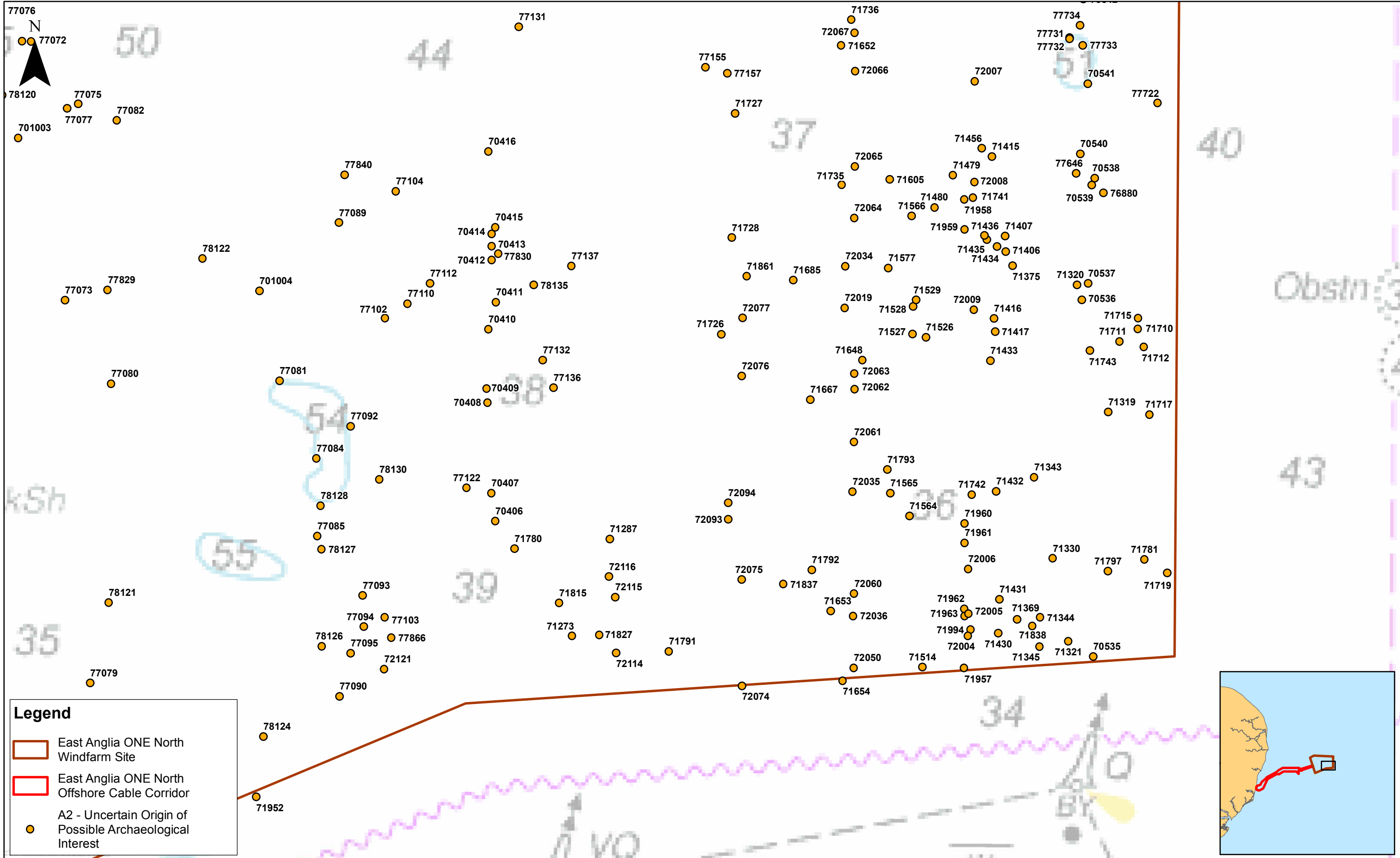
1:30,000
Scale @ A3

Prepared: FC
Checked: VC
Approved: PP

This map has been produced to the latest known information at the time of issue, and has been produced for your information only. Please consult with the SPR Offshore GIS team to ensure the content is still current before using the information contained on this map. To the fullest extent permitted by law, we accept no responsibility or liability (whether in contract, tort (including negligence) or otherwise) in respect of any errors or omissions in the information contained in the map and shall not be liable for any loss, damage or expense caused by such errors or omissions.

East Anglia ONE North
Palaeographic Features of Archaeological Potential (East Anglia ONE North Windfarm Site)

Drg No	EA1N-DEV-DRG-IBR-000457	
Rev	1	Datum: WGS 1984
Date	30/11/18	Projection: Zone 31N
Figure	16.3a	



Legend

- East Anglia ONE North Windfarm Site
- East Anglia ONE North Offshore Cable Corridor
- A2 - Uncertain Origin of Possible Archaeological Interest



Rev	Date	By	Comment
1	30/11/2018	FC	First Issue.

Prepared:	FC
Checked:	VC
Approved:	PP

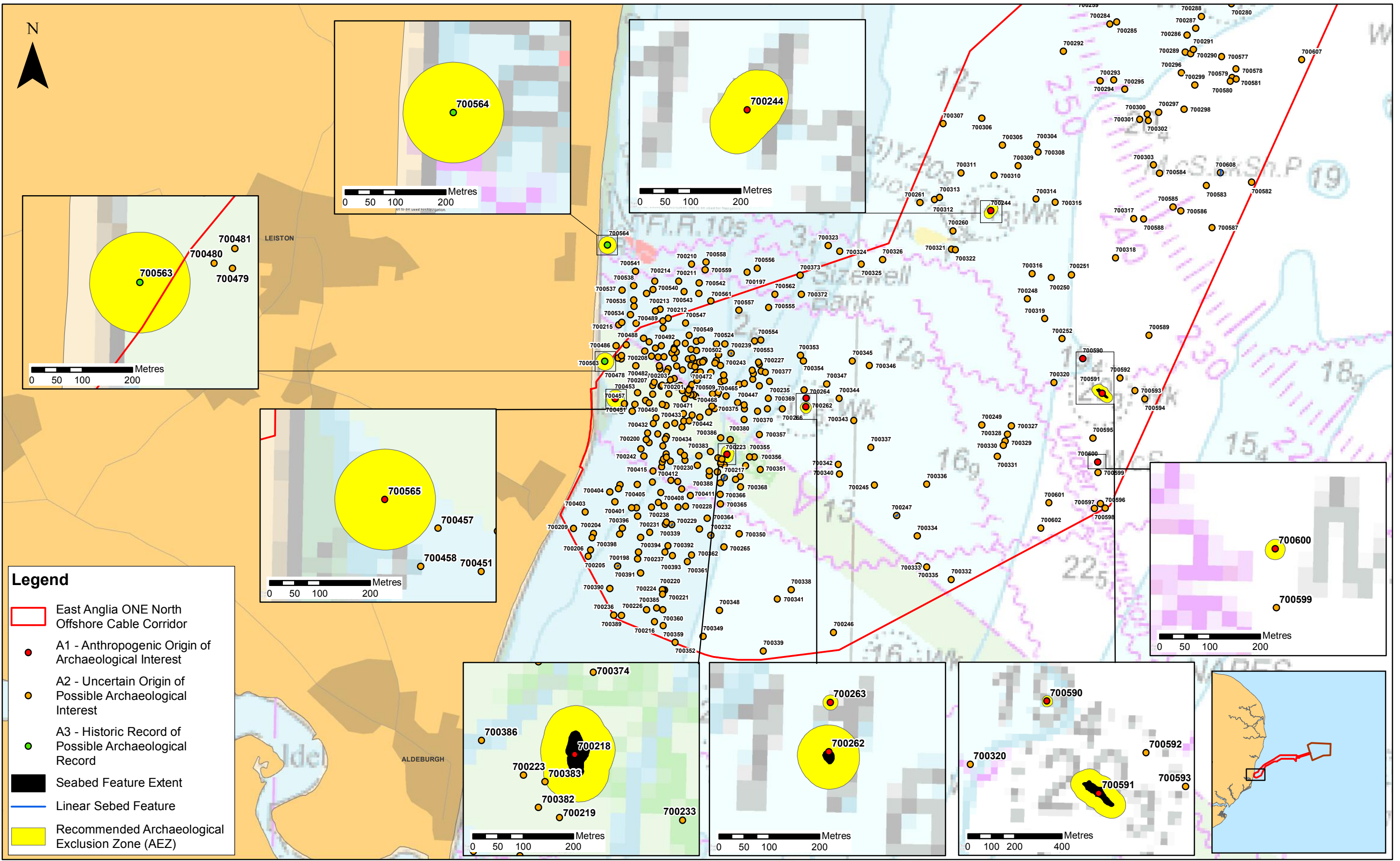
1:30,000
Scale @ A3

0 0.25 0.5 1 Km

Source: © Wessex Archaeology, 2018. © The Crown Estate, 2018. Charts from MarineFIND.co.uk Licence No EK001-0645-MF0095. Not to be used for navigation. This map has been produced to the latest known information at the time of issue, and has been produced for your information only. Please consult with the SPR Offshore GIS team to ensure the content is still current before using the information contained on this map. To the fullest extent permitted by law, we accept no responsibility or liability (whether in contract, tort (including negligence) or otherwise) in respect of any errors or omissions in the information contained in the map and shall not be liable for any loss, damage or expense caused by such errors or omissions.

East Anglia ONE North
Palaeographic Features of Archaeological Potential (East Anglia ONE North Windfarm Site)

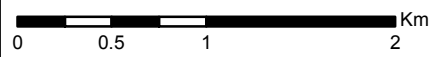
Drg No	EA1N-DEV-DRG-IBR-000457	
Rev	1	Datum: WGS 1984
Date	30/11/18	Projection: Zone 31N
Figure	16.3c	



Rev	Date	By	Comment
1	28/11/2018	FC	First Issue.

Prepared:	FC
Checked:	VC
Approved:	PP

1:40,000
Scale @ A3

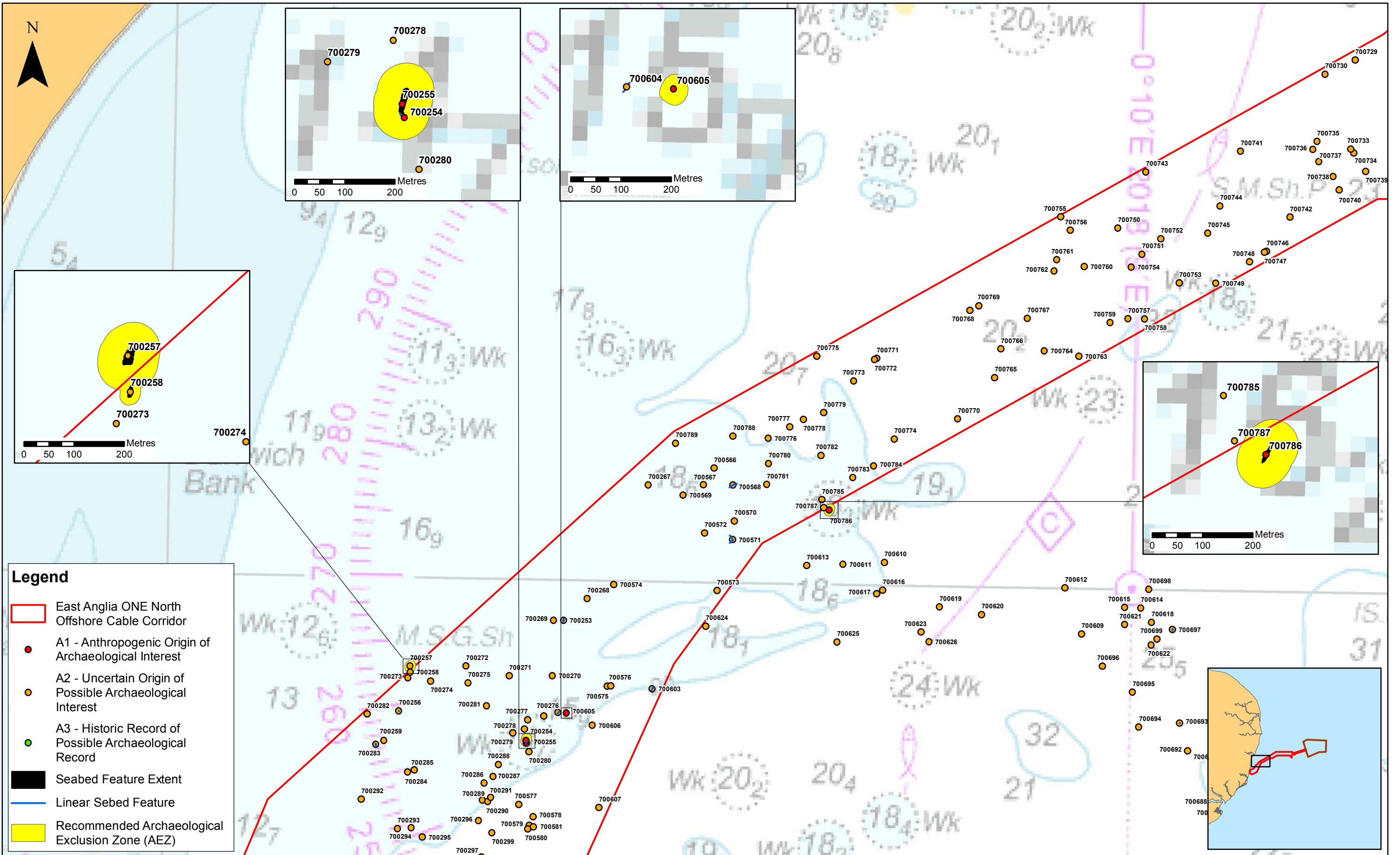


Source: © Wessex Archaeology, 2018. © The Crown Estate, 2018. Charts from MarineFIND.co.uk Licence No EK001-0645-MF0095. Not to be used for navigation. This map has been produced to the latest known information at the time of issue, and has been produced for your information only. Please consult with the SPR Offshore GIS team to ensure the content is still current before using the information contained on this map. To the fullest extent permitted by law, we accept no responsibility or liability (whether in contract, tort (including negligence) or otherwise) in respect of any errors or omissions in the information contained in the map and shall not be liable for any loss, damage or expense caused by such errors or omissions.

East Anglia ONE North Seabed Features of Archaeological Potential (East Anglia ONE North Offshore Cable Corridor)

Drg No	EA1N-DEV-DRG-IBR-000458
Rev	1
Date	28/11/18
Figure	16.4a

Datum: WGS 1984
Projection: Zone 31N



Legend

- East Anglia ONE North Offshore Cable Corridor
- A1 - Anthropogenic Origin of Archaeological Interest
- A2 - Uncertain Origin of Possible Archaeological Interest
- A3 - Historic Record of Possible Archaeological Record
- Seabed Feature Extent
- Linear Seabed Feature
- Recommended Archaeological Exclusion Zone (AEZ)

Rev	Date	By	Comment	Approved:
1	28/11/2018	FC	First Issue.	VC

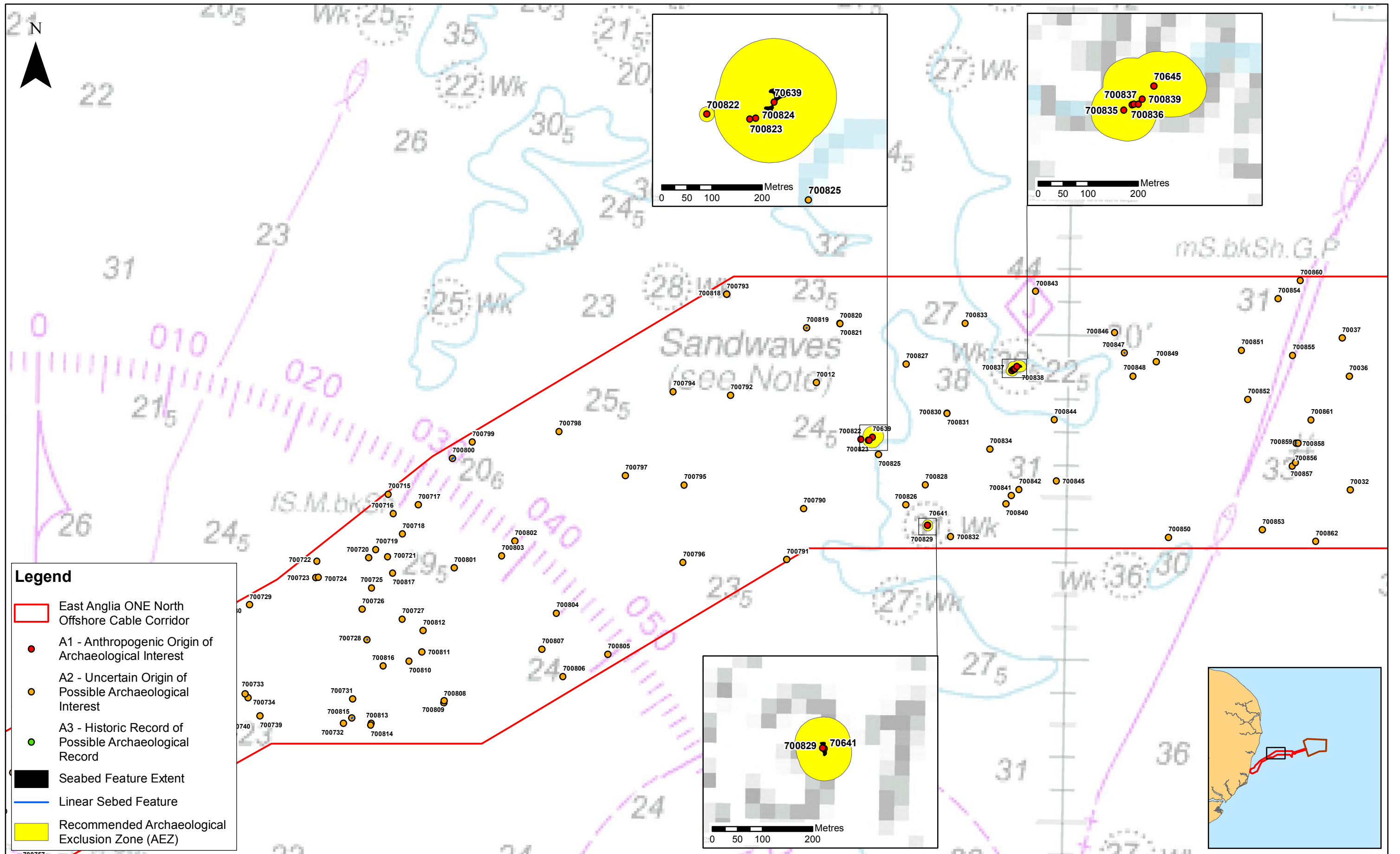
1:40,000
Scale @ A3

Prepared: FC
Checked: VC
Approved: PP

Source: © Wessex Archaeology, 2018. © The Crown Estate, 2018. Charts from MarineFIND.co.uk Licence No EK001-0645-MF0095. Not to be used for navigation. This map has been produced to the latest known information at the time of issue, and has been produced for your information only. Please consult with the SPR Offshore GIS team to ensure the content is still current before using the information contained on this map. To the fullest extent permitted by law, we accept no responsibility or liability (whether in contract, tort (including negligence) or otherwise in respect of any errors or omissions in the information contained in the map and shall not be liable for any loss, damage or expense caused by such errors or omissions.

East Anglia ONE North
Seabed Features of Archaeological Potential
(East Anglia ONE North Offshore Cable Corridor)

Drg No	EA1N-DEV-DRG-IBR-000458	Datum: WGS 1984 Projection: Zone 31N
Rev	1	
Date	28/11/18	
Figure	16.4b	



Legend

- East Anglia ONE North Offshore Cable Corridor
- A1 - Anthropogenic Origin of Archaeological Interest
- A2 - Uncertain Origin of Possible Archaeological Interest
- A3 - Historic Record of Possible Archaeological Record
- Seabed Feature Extent
- Linear Seabed Feature
- Recommended Archaeological Exclusion Zone (AEZ)

Rev	Date	By	Comment
1	28/11/2018	FC	First Issue.

1:40,000
Scale @ A3

0 0.5 1 2 Km

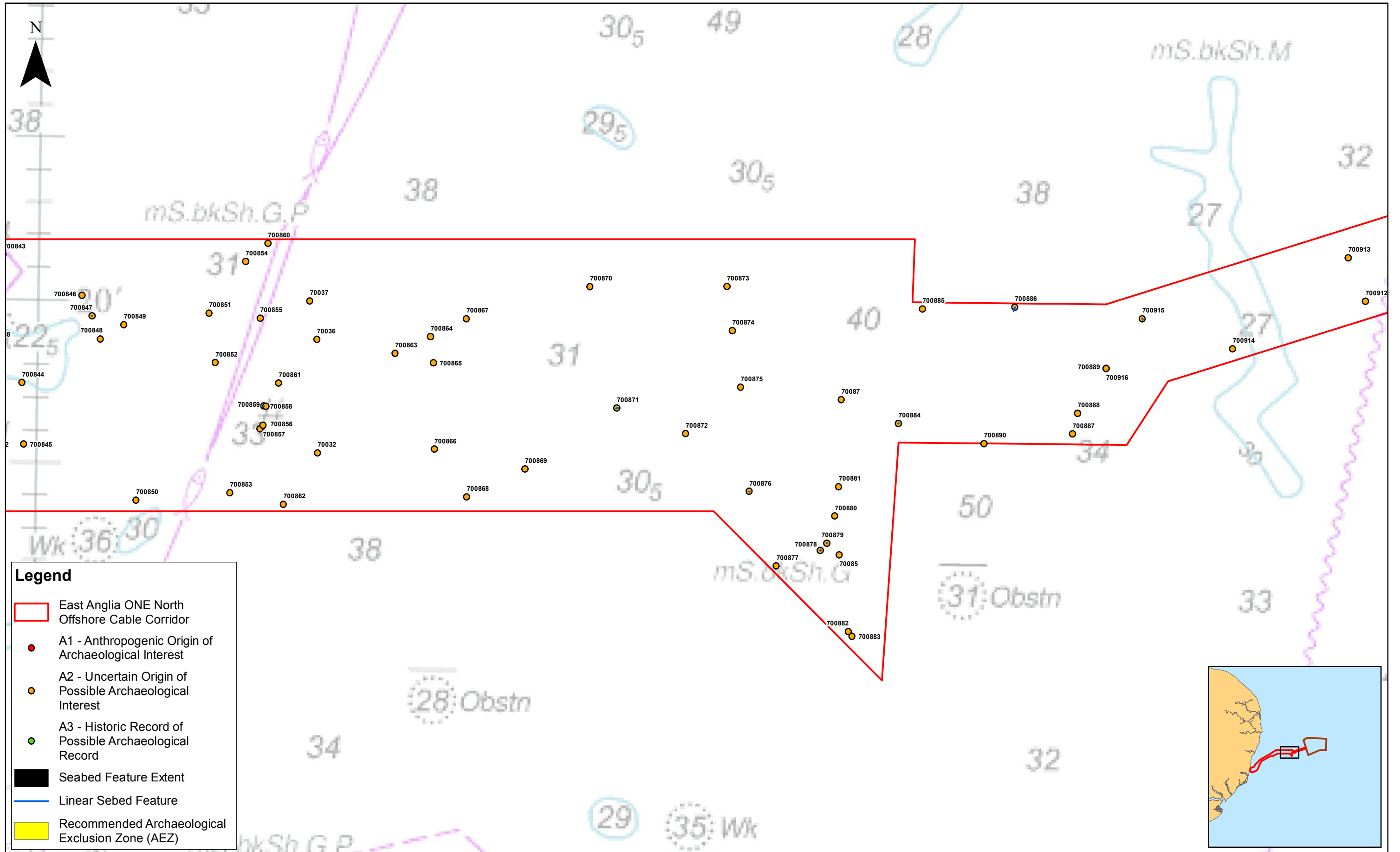
Prepared: FC
Checked: VC
Approved: PP

Source: © Wessex Archaeology, 2018. © The Crown Estate, 2018. Charts from MarineFIND.co.uk Licence No EK001-0645-MF0095. Not to be used for navigation. This map has been produced to the latest known information at the time of issue, and has been produced for your information only. Please consult with the SPR Offshore GIS team to ensure the content is still current before using the information contained on this map. To the fullest extent permitted by law, we accept no responsibility or liability (whether in contract, tort (including negligence) or otherwise) in respect of any errors or omissions in the information contained in the map and shall not be liable for any loss, damage or expense caused by such errors or omissions.

East Anglia ONE North
Seabed Features of Archaeological Potential
(East Anglia ONE North Offshore Cable Corridor)

Drg No	EA1N-DEV-DRG-IBR-000458
Rev	1
Date	28/11/18
Figure	16.4c

Datum: WGS 1984
Projection: Zone 31N



Legend

- East Anglia ONE North Offshore Cable Corridor
- A1 - Anthropogenic Origin of Archaeological Interest
- A2 - Uncertain Origin of Possible Archaeological Interest
- A3 - Historic Record of Possible Archaeological Record
- Seabed Feature Extent
- Linear Seabed Feature
- Recommended Archaeological Exclusion Zone (AEZ)

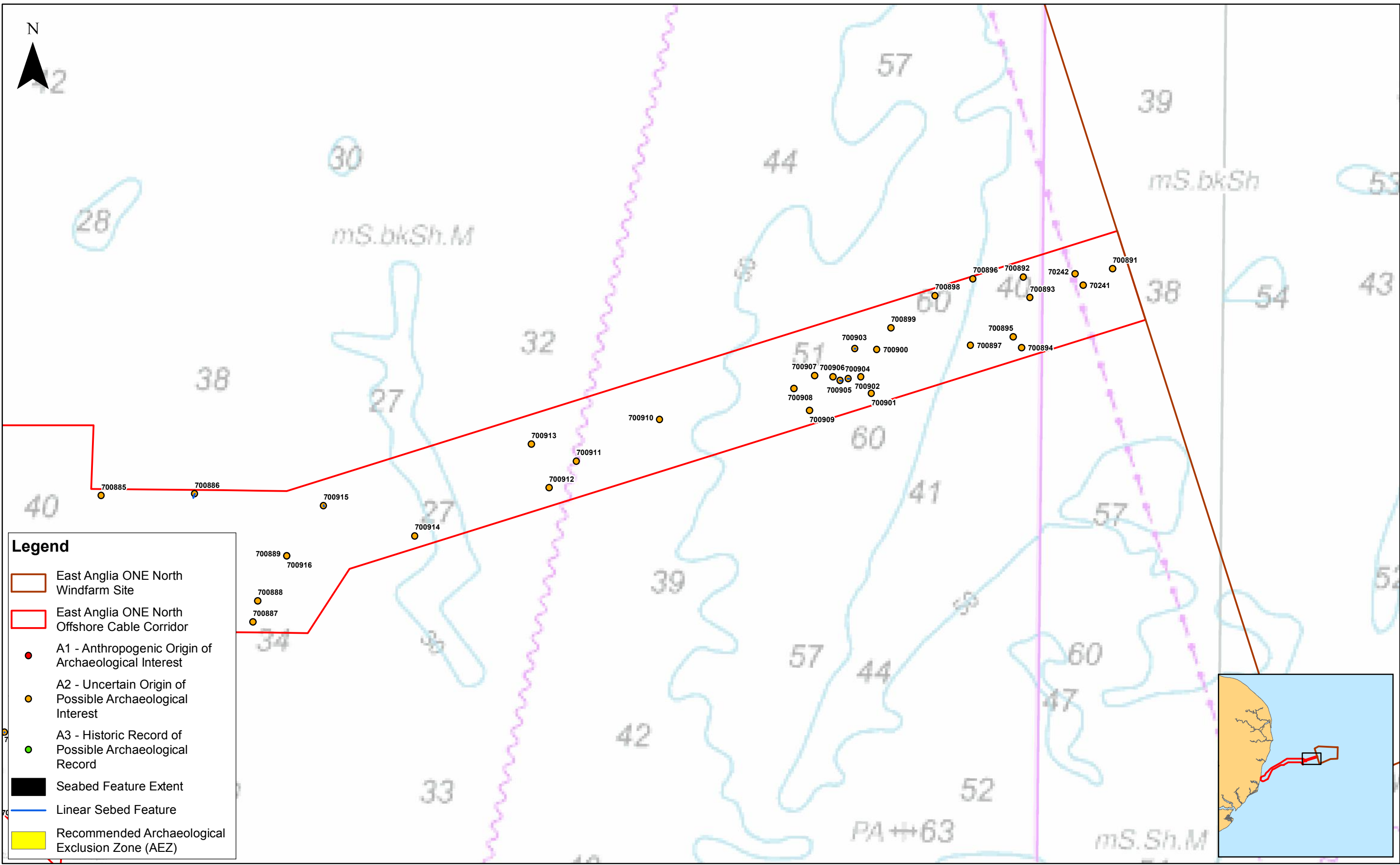
Rev	Date	By	Comment	Checked	Approved
1	28/11/2018	FC	First Issue.	VC	PP

1:40,000
Scale @ A3

Source: © Wessex Archaeology, 2018. © The Crown Estate, 2018. Charts from MarineFIND.co.uk Licence No EK001-0645-MF0095. Not to be used for navigation. This map has been produced to the latest known information at the time of issue, and has been produced for your information only. Please consult with the SPR Offshore GIS team to ensure the content is still current before using the information contained on this map. To the fullest extent permitted by law, we accept no responsibility or liability (whether in contract, tort (including negligence) or otherwise) in respect of any errors or omissions in the information contained in the map and shall not be liable for any loss, damage or expense caused by such errors or omissions.

East Anglia ONE North
Seabed Features of Archaeological Potential
(East Anglia ONE North Offshore Cable Corridor)

Drg No	EA1N-DEV-DRG-IBR-000458
Rev	1
Date	28/11/18
Figure	16.4d
Datum: WGS 1984 Projection: Zone 31N	



Legend

- East Anglia ONE North Windfarm Site
- East Anglia ONE North Offshore Cable Corridor
- A1 - Anthropogenic Origin of Archaeological Interest
- A2 - Uncertain Origin of Possible Archaeological Interest
- A3 - Historic Record of Possible Archaeological Record
- Seabed Feature Extent
- Linear Sebed Feature
- Recommended Archaeological Exclusion Zone (AEZ)



Rev	Date	By	Comment	Approved:
1	28/11/2018	FC	First Issue.	PP

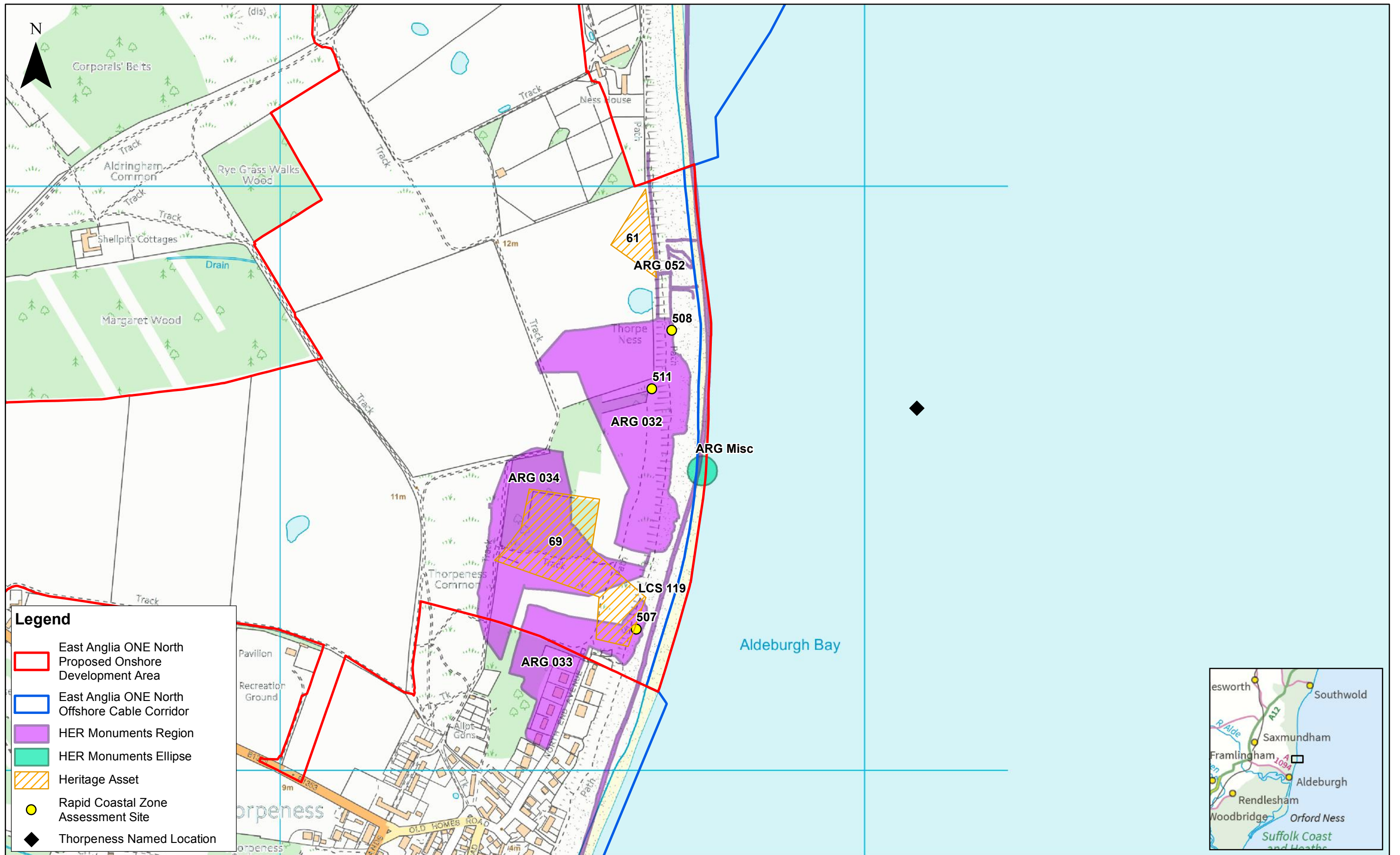
1:40,000
Scale @ A3

0 0.5 1 2 Km

Source: © Wessex Archaeology, 2018. © The Crown Estate, 2018. Charts from MarineFIND.co.uk Licence No EK001-0645-MF0095. Not to be used for navigation. This map has been produced to the latest known information at the time of issue, and has been produced for your information only. Please consult with the SPR Offshore GIS team to ensure the content is still current before using the information contained on this map. To the fullest extent permitted by law, we accept no responsibility or liability (whether in contract, tort (including negligence) or otherwise) in respect of any errors or omissions in the information contained in the map and shall not be liable for any loss, damage or expense caused by such errors or omissions.

East Anglia ONE North
Seabed Features of Archaeological Potential
(East Anglia ONE North Offshore Cable Corridor)

Drg No	EA1N-DEV-DRG-IBR-000458
Rev	1
Date	28/11/18
Figure	16.4e
Datum: WGS 1984 Projection: Zone 31N	



Legend

- East Anglia ONE North Proposed Onshore Development Area
- East Anglia ONE North Offshore Cable Corridor
- HER Monuments Region
- HER Monuments Ellipse
- Heritage Asset
- Rapid Coastal Zone Assessment Site
- ◆ Thorpeness Named Location



Rev	Date	By	Comment	Approved:
1	28/11/2018	FC	First Issue.	VC

1:6,000
Scale @ A3

0 75 150 300 Meters

Source: © Suffolk County Council, 2018. Data provided by MarineFind, 2018. Charts from MarineFIND.co.uk © Licence No EK001-0645-MF0095.
This map has been produced to the latest known information at the time of issue, and has been produced for your information only. Please consult with the SPPR Offshore GIS team to ensure the content is still current before using the information contained on the map. To the fullest extent permitted by law, we accept no responsibility or liability (whether in contract, tort (including negligence) or otherwise in respect of any errors or omissions in the information contained in the map and shall not be liable for any loss, damage or expense caused by such errors or omissions.

East Anglia ONE North
Intertidal Heritage Assets and Recorded Losses

Drg No	EA1N-DEV-DRG-IBR-000456	Coordinate System: BNG Datum: OSGB36
Rev	1	
Date	28/11/18	
Figure	16.5	