



**SCOTTISHPOWER  
RENEWABLES**

# **East Anglia ONE North Offshore Windfarm**

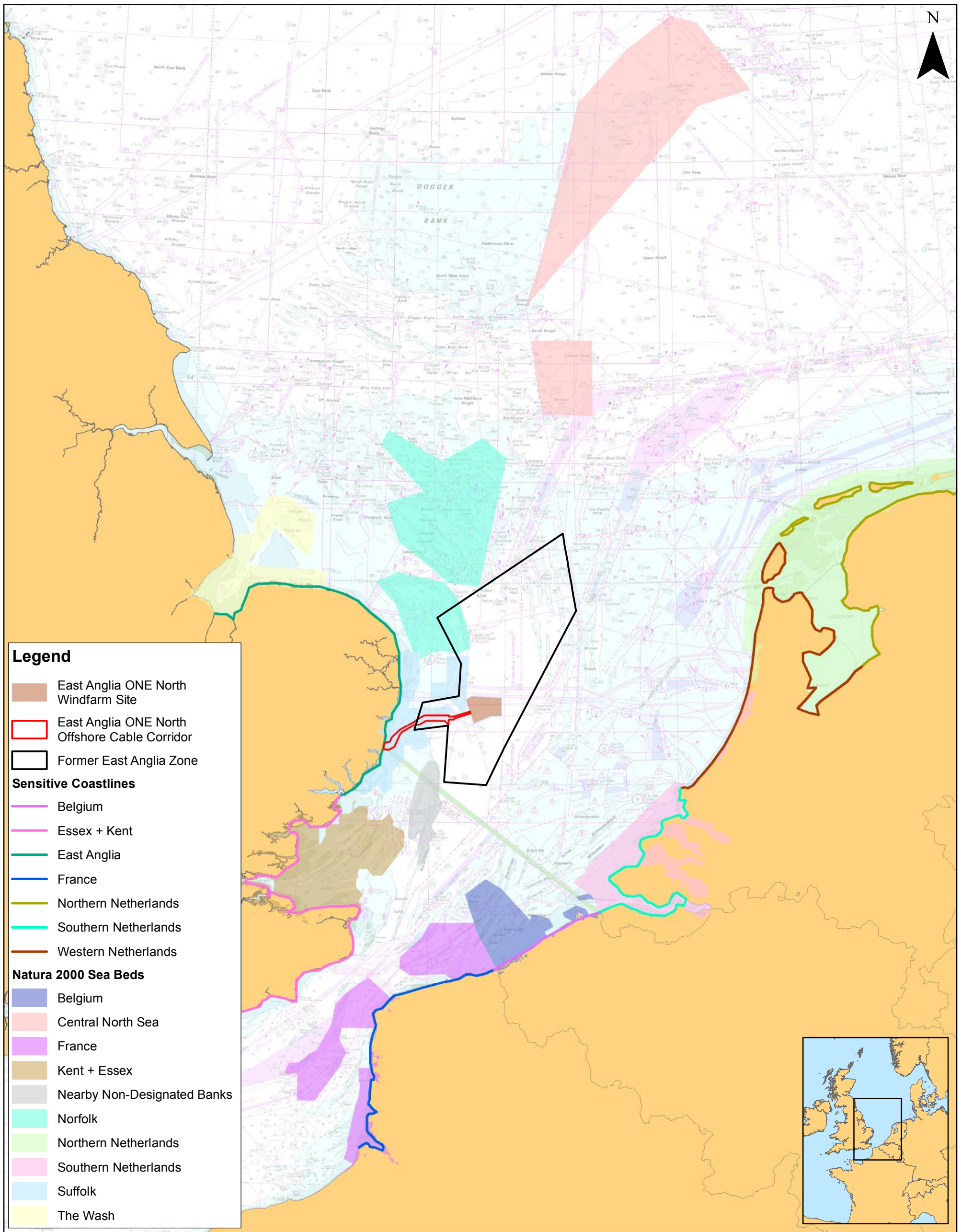

## **Chapter 7**

**Marine Geology, Oceanography and  
Physical Processes**

### **Figures**

Preliminary Environmental Information  
Volume 2

**This page is intentionally blank**

Source: © European Union Natura. 2000. © Crown copyright. All rights reserved. 2008. © The Crown Estate. 2018. Charts from MarineFIND.co.uk Licence No EX001-0645-MF0095. Not to be used for navigation.

This map has been produced to the latest known information at the time of issue, and has been produced for your information only.

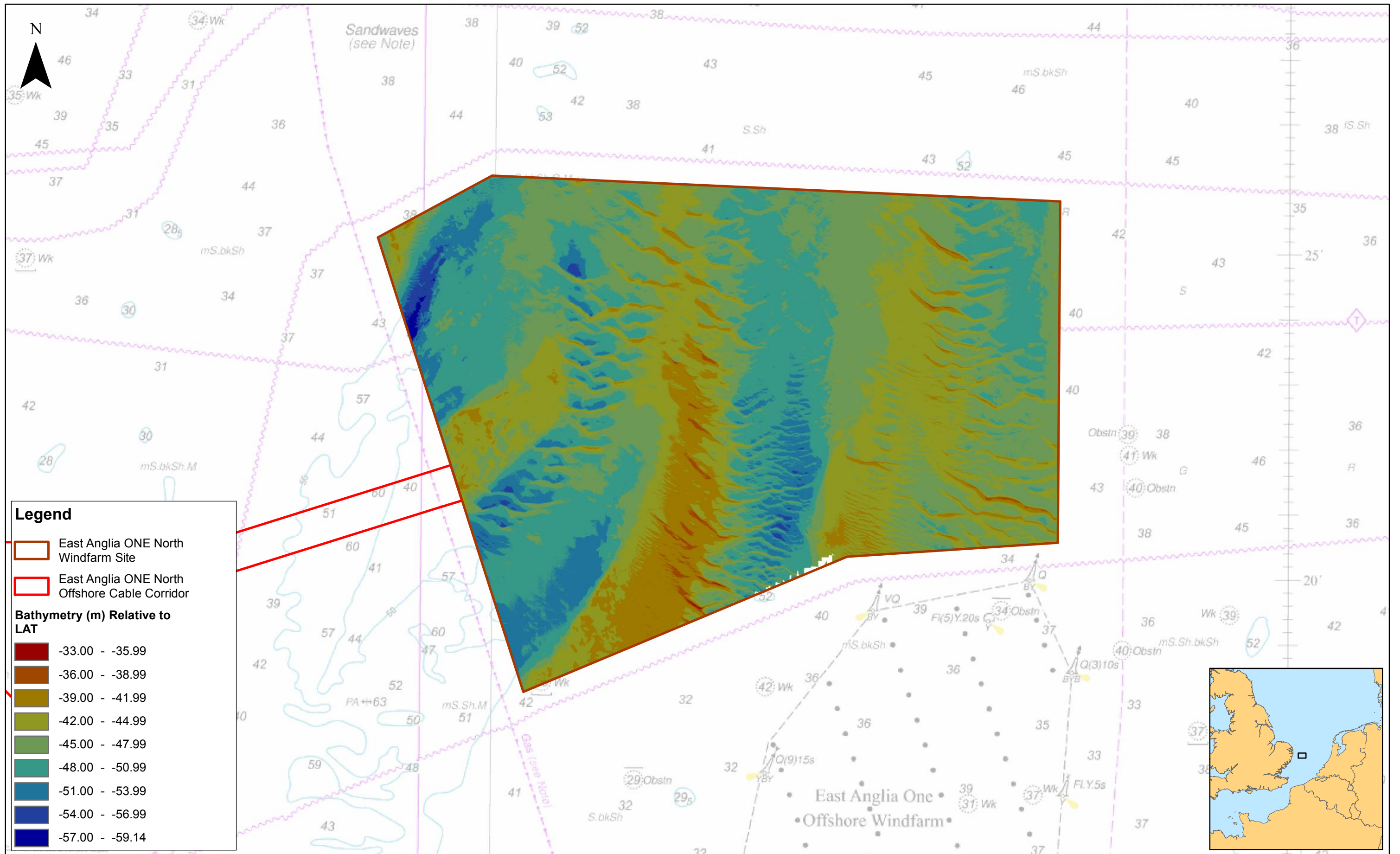
Please consult with the SPR Offshore GIS team to ensure the content is still current before using the information contained on this map.

To the fullest extent permitted by law, we accept no responsibility or liability (whether in contract, tort (including negligence) or otherwise in respect of any errors or omissions in the information contained in the map and shall not be liable for any loss, damage or expense caused by such errors or omissions.

## East Anglia ONE North

### Receptor Groups for Marine Geology, Oceanography and Physical Processes

|            |             |           |                |           |    |                         |             |                         |   |
|------------|-------------|-----------|----------------|-----------|----|-------------------------|-------------|-------------------------|---|
|            |             |           |                | Prepared: | FC | Scale @ A3: 1:2,000,000 |             | 0 20 40 80 120 Km       |   |
| 1          | 21/11/18    | FC        | First Issue.   | Checked:  | DB | <b>Figure</b>           | <b>Date</b> | <b>Dwg No.</b>          | Datum: WGS 1984<br>Projection: Zone 31N |
| <b>Rev</b> | <b>Date</b> | <b>By</b> | <b>Comment</b> | Approved: | PP | 7.1                     | 21/11/18    | EA1N-DEV-DRG-IBR-000383 |   |



| Rev | Date       | By | Comment      |
|-----|------------|----|--------------|
| 1   | 24/10/2018 | FC | First Issue. |

1:100,000  
Scale @ A3

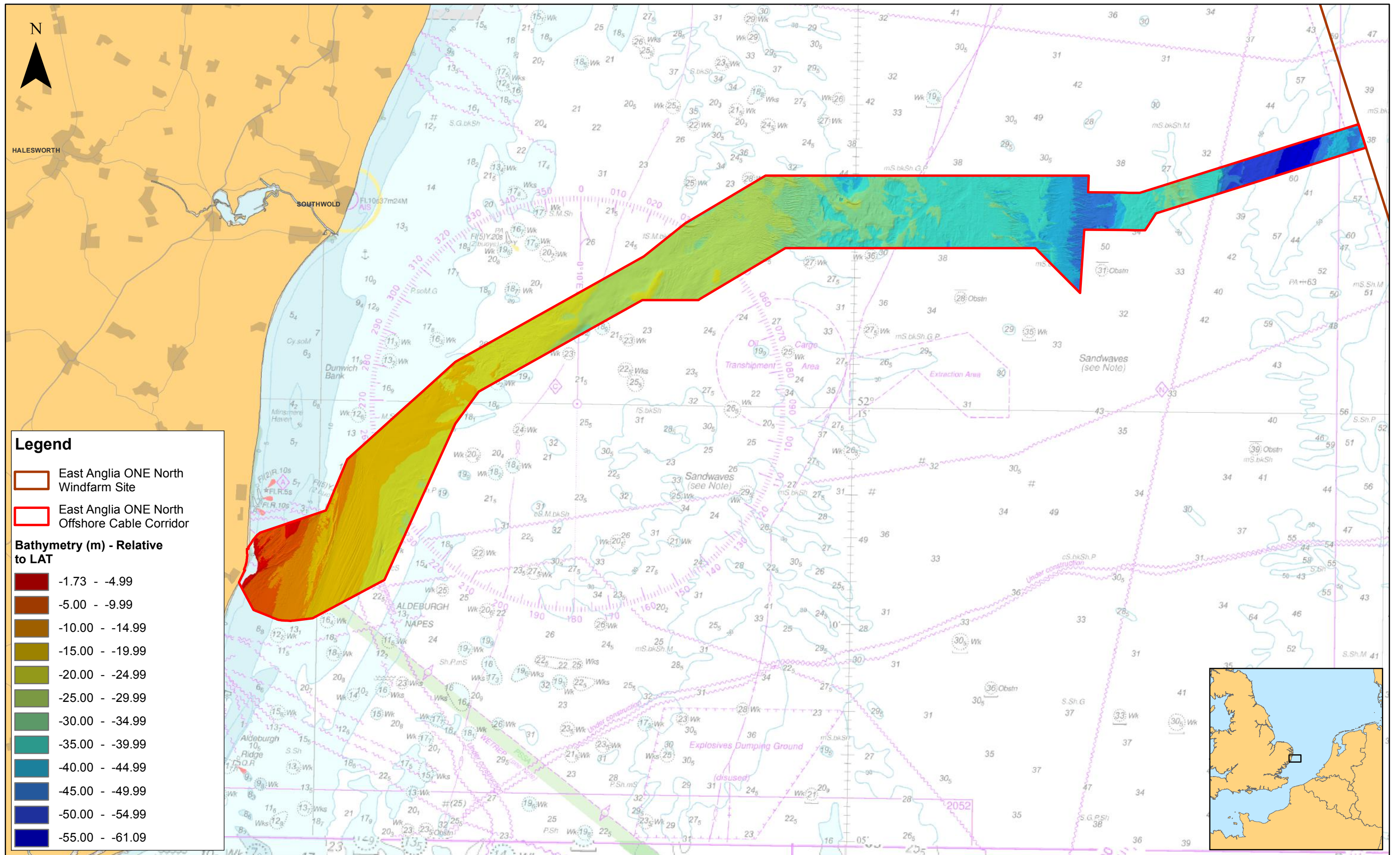
Prepared: FC  
Checked: DB  
Approved: PP

This map has been produced to the latest known information at the time of issue, and has been produced for your information only. Please consult with the SRP Offshore GIS team to ensure the content is still current before using the information contained on this map. To the fullest extent permitted by law, we accept no responsibility or liability (whether in contract, tort (including negligence) or otherwise in respect of any errors or omissions in the information contained in the map and shall not be liable for any loss, damage or expense caused by such errors or omissions.

## East Anglia ONE North

### Bathymetry and Bedforms of the East Anglia ONE North Windfarm Site

|               |                         |   |
|---------------|-------------------------|---|
| <b>Drg No</b> | EA1N-DEV-DRG-IBR-000350 |   |
| <b>Rev</b>    | 1                       | Datum: WGS 1984<br>Projection: Zone 31N |
| <b>Date</b>   | 24/10/18                |   |
| <b>Figure</b> | 7.2                     |   |



**Legend**

- East Anglia ONE North Windfarm Site
- East Anglia ONE North Offshore Cable Corridor

**Bathymetry (m) - Relative to LAT**

- 1.73 - -4.99
- 5.00 - -9.99
- 10.00 - -14.99
- 15.00 - -19.99
- 20.00 - -24.99
- 25.00 - -29.99
- 30.00 - -34.99
- 35.00 - -39.99
- 40.00 - -44.99
- 45.00 - -49.99
- 50.00 - -54.99
- 55.00 - -61.09

| Rev | Date       | By | Comment      |
|-----|------------|----|--------------|
| 1   | 24/10/2018 | FC | First Issue. |

Scale @ A3: 1:150,000

0 1 2 4 Km

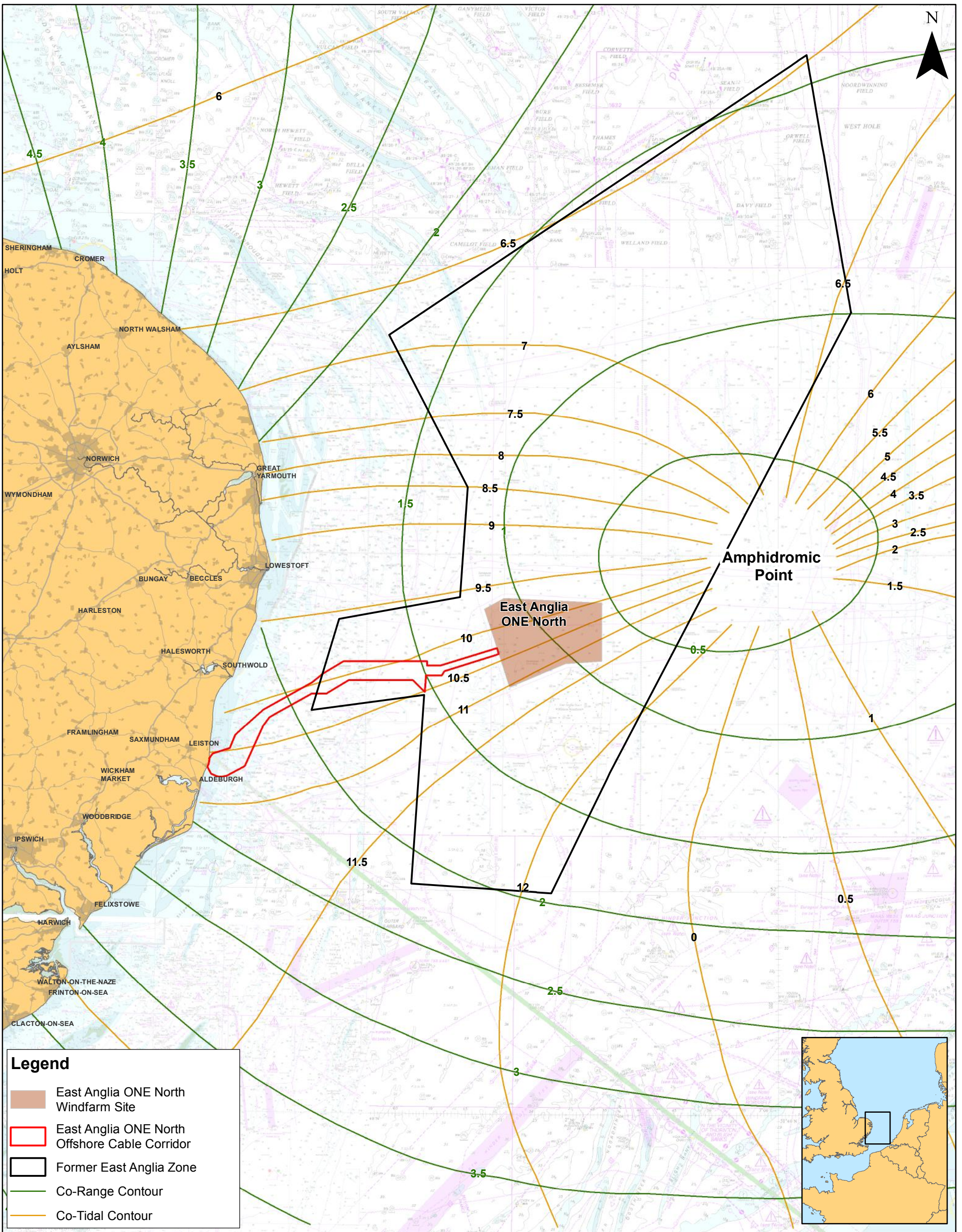
Prepared: FC  
Checked: DB  
Approved: PP

Source: © Bibby Offshore, 2018. © The Crown Estate, 2018. Charts from MarineFIND.co.uk Licence No EK001-0645-MF0095. Not to be used for navigation. This map has been produced to the latest known information at the time of issue, and has been produced for your information only. Please consult with the SPiR Offshore GIS team to ensure the content is still current before using the information contained on this map. To the fullest extent permitted by law, we accept no responsibility or liability (whether in contract, tort (including negligence) or otherwise) in respect of any errors or omissions in the information contained in the map and shall not be liable for any loss, damage or expense caused by such errors or omissions.

**East Anglia ONE North**

Bathymetry and Bedforms of the Offshore Cable Corridor

| Drg No | EA1N-DEV-DRG-IBR-000351 |                      |
|--------|-------------------------|----------------------|
| Rev    | 1                       | Datum: WGS 1984      |
| Date   | 24/10/18                | Projection: Zone 31N |
| Figure | 7.3                     |                      |



**Legend**

- East Anglia ONE North Windfarm Site
- East Anglia ONE North Offshore Cable Corridor
- Former East Anglia Zone
- Co-Range Contour
- Co-Tidal Contour

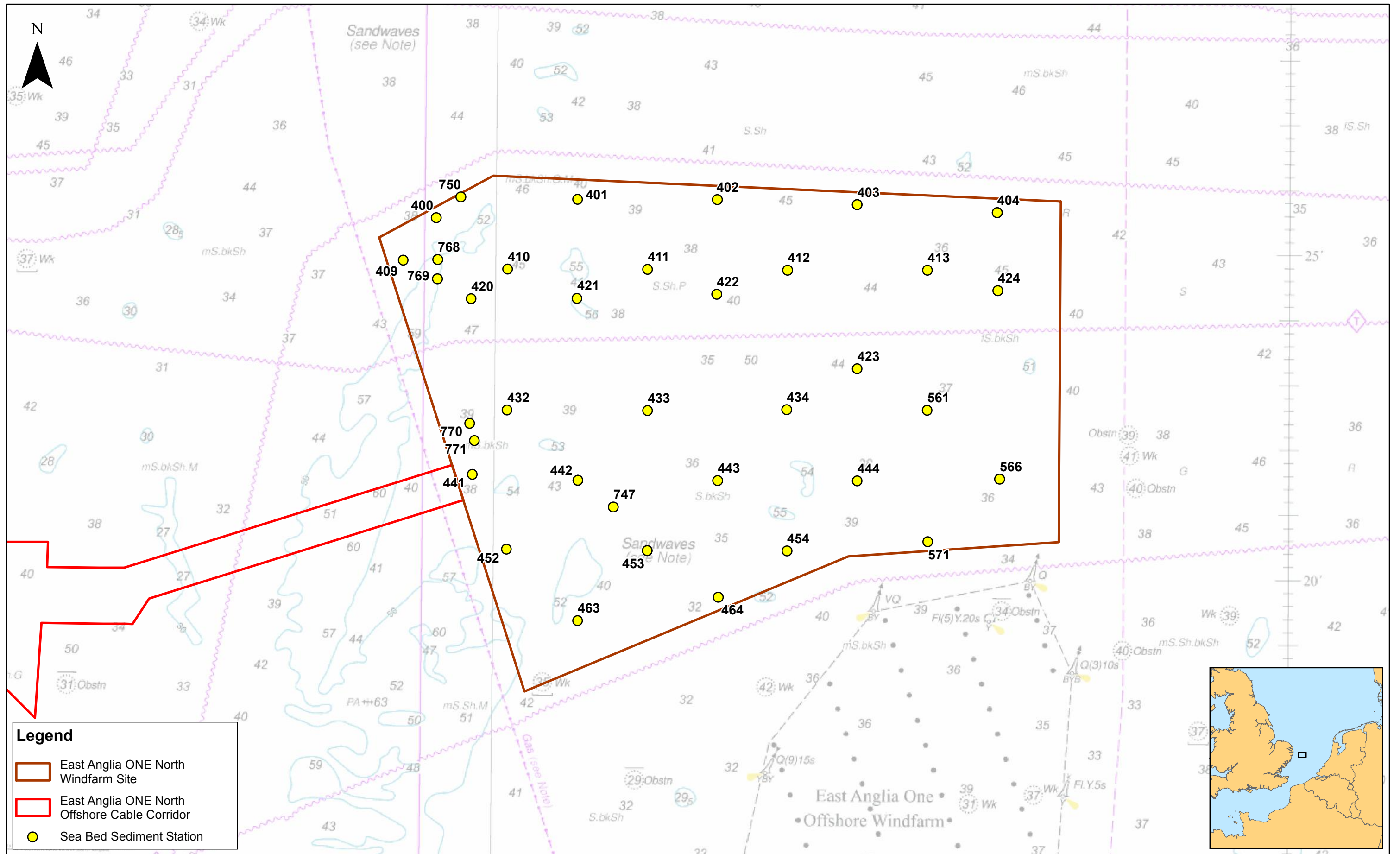
Source: © The Crown Estate, 2018. Charts from MarineFIND.co.uk Licence No EK001-0645-MF0095. Not to be used for navigation.  
 This map has been produced to the latest known information at the time of issue, and has been produced for your information only.  
 Please consult with the SPR Offshore GIS team to ensure the content is still current before using the information contained on this map.  
 To the fullest extent permitted by law, we accept no responsibility or liability (whether in contract, tort (including negligence) or otherwise in respect of any errors or omissions in the information contained in the map and shall not be liable for any loss, damage or expense caused by such errors or omissions.

**East Anglia ONE North**  
 Position of the Amphidromic Point

Scale @ A3: 1:600,000 0 5 10 20 30 Kilometres

|           |    |        |          |                         |   |
|-----------|----|--------|----------|-------------------------|---|
| Prepared: | FC | Figure | Date     | Dwg No.                 | Datum: WGS 1984<br>Projection: Zone 31N |
| Checked:  | DB | 7.4    | 24/10/18 | EA1N-DEV-DRG-IBR-000352 |   |
| Approved: | PP |        |          |                         |   |

| Rev | Date     | By | Comment      |  |
|-----|----------|----|--------------|--|
| 1   | 24/10/18 | FC | First Issue. |  |



**Legend**

- East Anglia ONE North Windfarm Site
- East Anglia ONE North Offshore Cable Corridor
- Sea Bed Sediment Station



| Rev | Date       | By | Comment      |
|-----|------------|----|--------------|
| 1   | 24/10/2018 | FC | First Issue. |

1:100,000  
Scale @ A3

0 1 2 4 Km

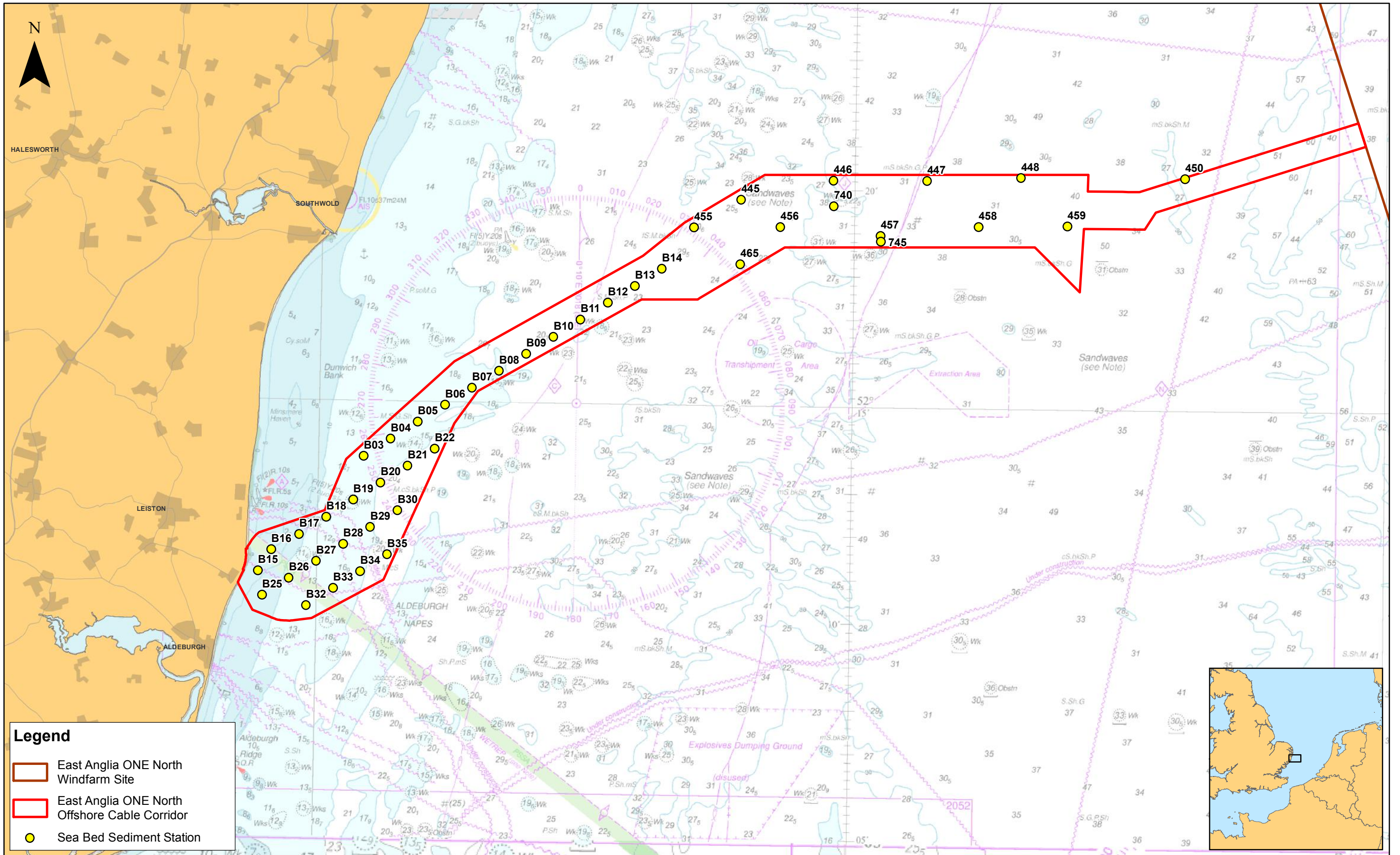
Prepared: FC  
Checked: DB  
Approved: PP

Source: © The Crown Estate, 2018. Charts from MarineFIND.co.uk. Licence No EK001-0645-MF0095. Not to be used for navigation. This map has been produced to the latest known information at the time of issue, and has been produced for your information only. Please consult with the SPR Offshore GIS team to ensure the content is still current before using the information contained on this map. To the fullest extent permitted by law, we accept no responsibility or liability (whether in contract, tort (including negligence) or otherwise) in respect of any errors or omissions in the information contained in the map and shall not be liable for any loss, damage or expense caused by such errors or omissions.

## East Anglia ONE North

### Sea Bed Sediment Stations within the Windfarm Site

|   |                         |
|---|-------------------------|
| <b>Drg No</b>                           | EA1N-DEV-DRG-IBR-000353 |
| <b>Rev</b>                              | 1                       |
| <b>Date</b>                             | 24/10/18                |
| <b>Figure</b>                           | 7.5                     |
| Datum: WGS 1984<br>Projection: Zone 31N |                         |



**Legend**

- East Anglia ONE North Windfarm Site
- East Anglia ONE North Offshore Cable Corridor
- Sea Bed Sediment Station



| Rev | Date       | By | Comment      |
|-----|------------|----|--------------|
| 1   | 24/10/2018 | FC | First Issue. |

|           |    |
|-----------|----|
| Prepared: | FC |
| Checked:  | DB |
| Approved: | PP |

1:150,000  
Scale @ A3

0 1 2 4 Km

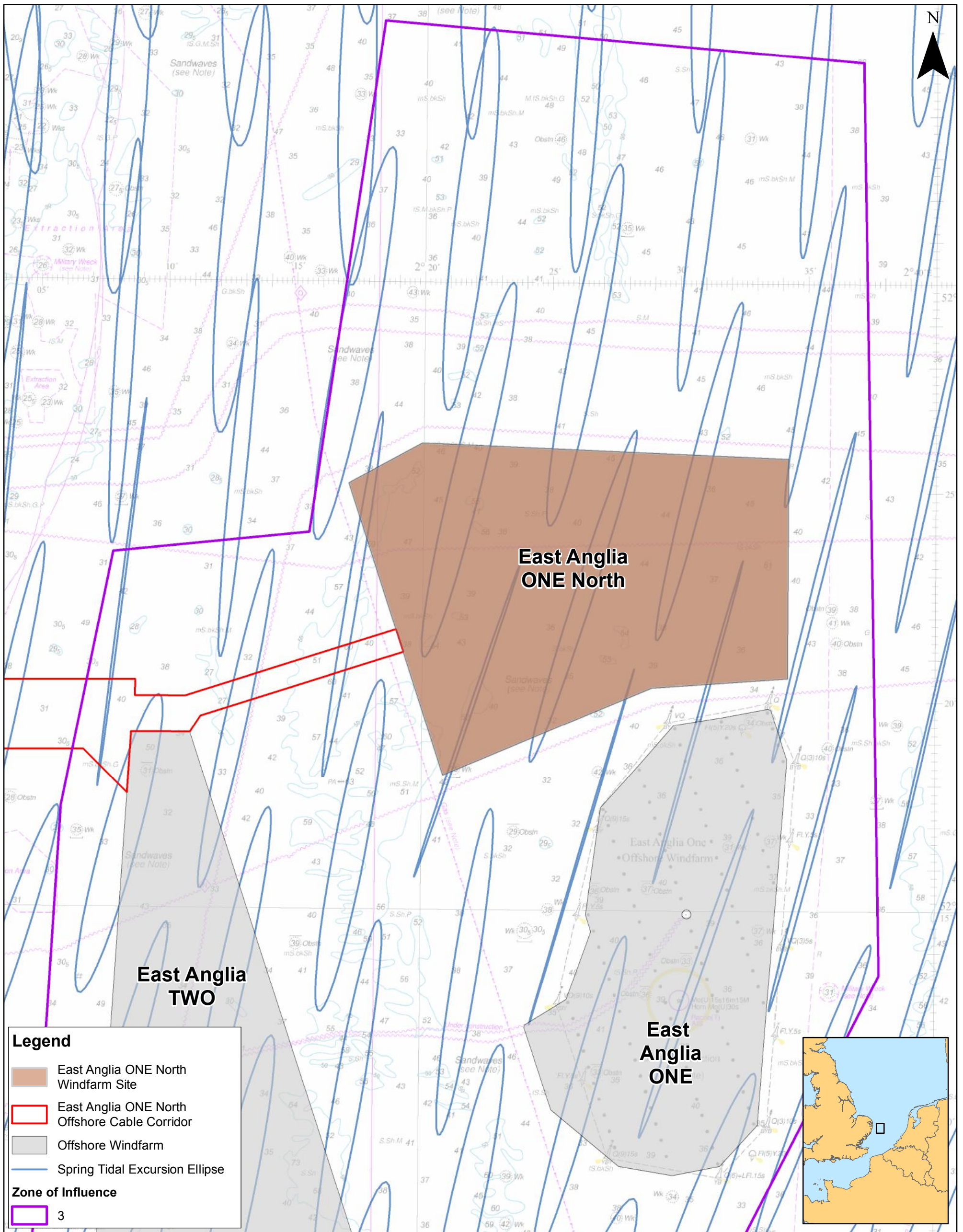
Source: © The Crown Estate, 2018. Charts from MarineFIND.co.uk Licence No EK001-0645-MF0095. Not to be used for navigation. This map has been produced to the latest known information at the time of issue, and has been produced for your information only. Please consult with the SPR Offshore GIS team to ensure the content is still current before using the information contained on this map. To the fullest extent permitted by law, we accept no responsibility or liability (whether in contract, tort (including negligence) or otherwise) in respect of any errors or omissions in the information contained in the map and shall not be liable for any loss, damage or expense caused by such errors or omissions.

## East Anglia ONE North

### Sea Bed Sediment Stations within the Offshore Cable Corridor

|                    |                         |
|--------------------|-------------------------|
| <b>Drg No</b>      | EA1N-DEV-DRG-IBR-000354 |
| <b>Rev</b>         | 1                       |
| <b>Date</b>        | 24/10/18                |
| <b>Figure</b>      | 7.6                     |
| <b>Datum:</b>      | WGS 1984                |
| <b>Projection:</b> | Zone 31N                |





Source: © Crown copyright. All rights reserved. 2008. © The Crown Estate, 2016. Charts from MarineFIND.co.uk Licence No EK001-0645-MF0065. Not to be used for navigation.

This map has been produced to the latest known information at the time of issue, and has been produced for your information only.

Please consult with the SPR Offshore GIS team to ensure the content is still current before using the information contained on this map.

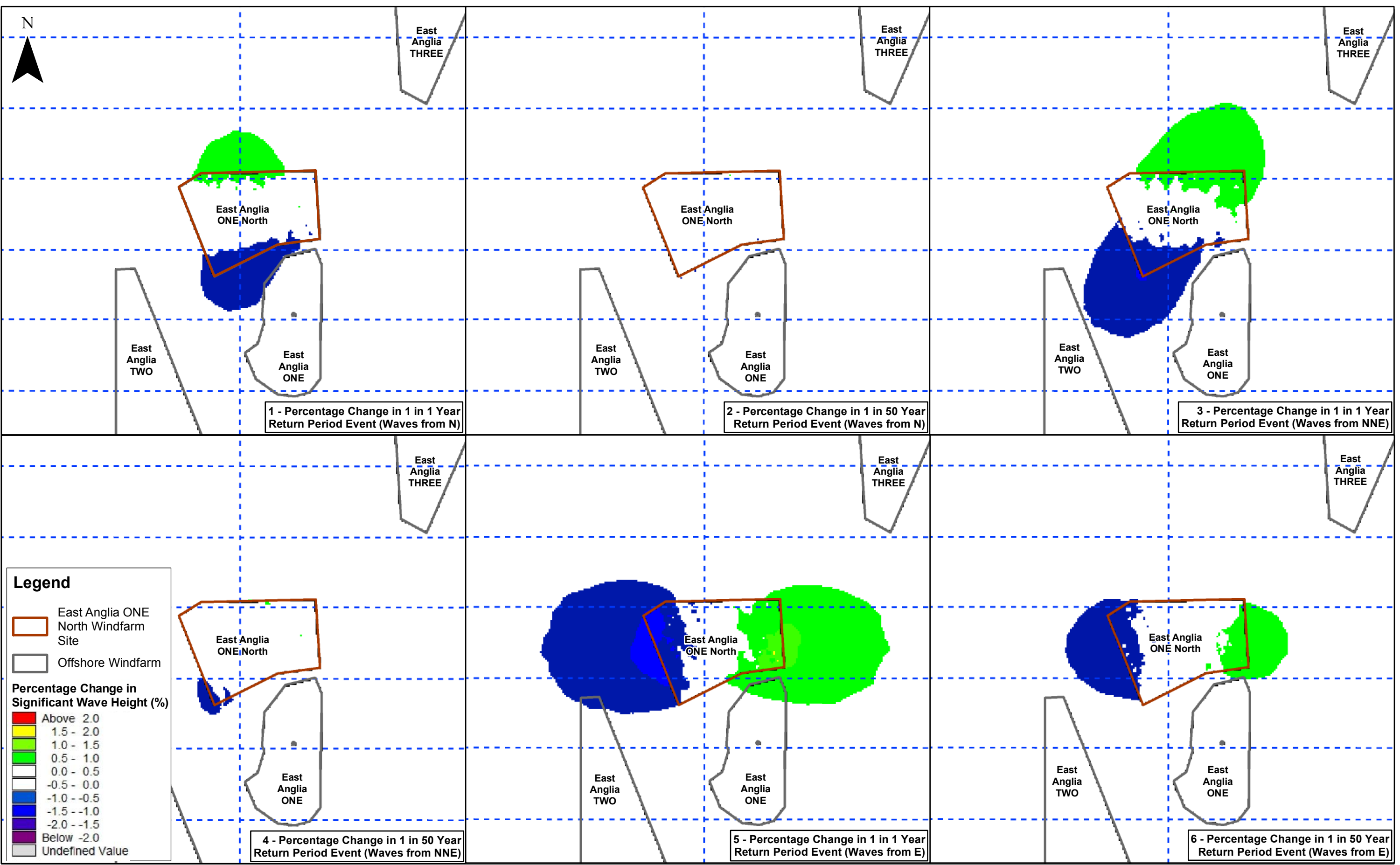
To the fullest extent permitted by law, we accept no responsibility or liability (whether in contract, tort (including negligence) or otherwise in respect of any errors or omissions in the information contained in the map and shall not be liable for any loss, damage or expense caused by such errors or omissions.

## East Anglia ONE North

### Zone of Potential Influence on the Tidal Regime

| Prepared: | FC       |    |              |
|-----------|----------|----|--------------|
| Checked:  | DB       |    |              |
| Approved: | PP       |    |              |
| 1         | 21/11/18 | FC | First Issue. |
| Rev       | Date     | By | Comment      |

|                       |             |                         |                        |
|-----------------------|-------------|-------------------------|------------------------|
| Scale @ A3: 1:160,500 |             |                         |                        |
| <b>Figure</b>         | <b>Date</b> | <b>Dwg No.</b>          | <b>Datum:</b> WGS 1984 |
| 7.7                   | 21/11/18    | EA1N-DEV-DRG-IBR-000385 | Projection: Zone 31N   |



| Rev | Date       | By | Comment      |
|-----|------------|----|--------------|
| 1   | 21/11/2018 | FC | First Issue. |

|           |    |
|-----------|----|
| Prepared: | FC |
| Checked:  | DB |
| Approved: | PP |

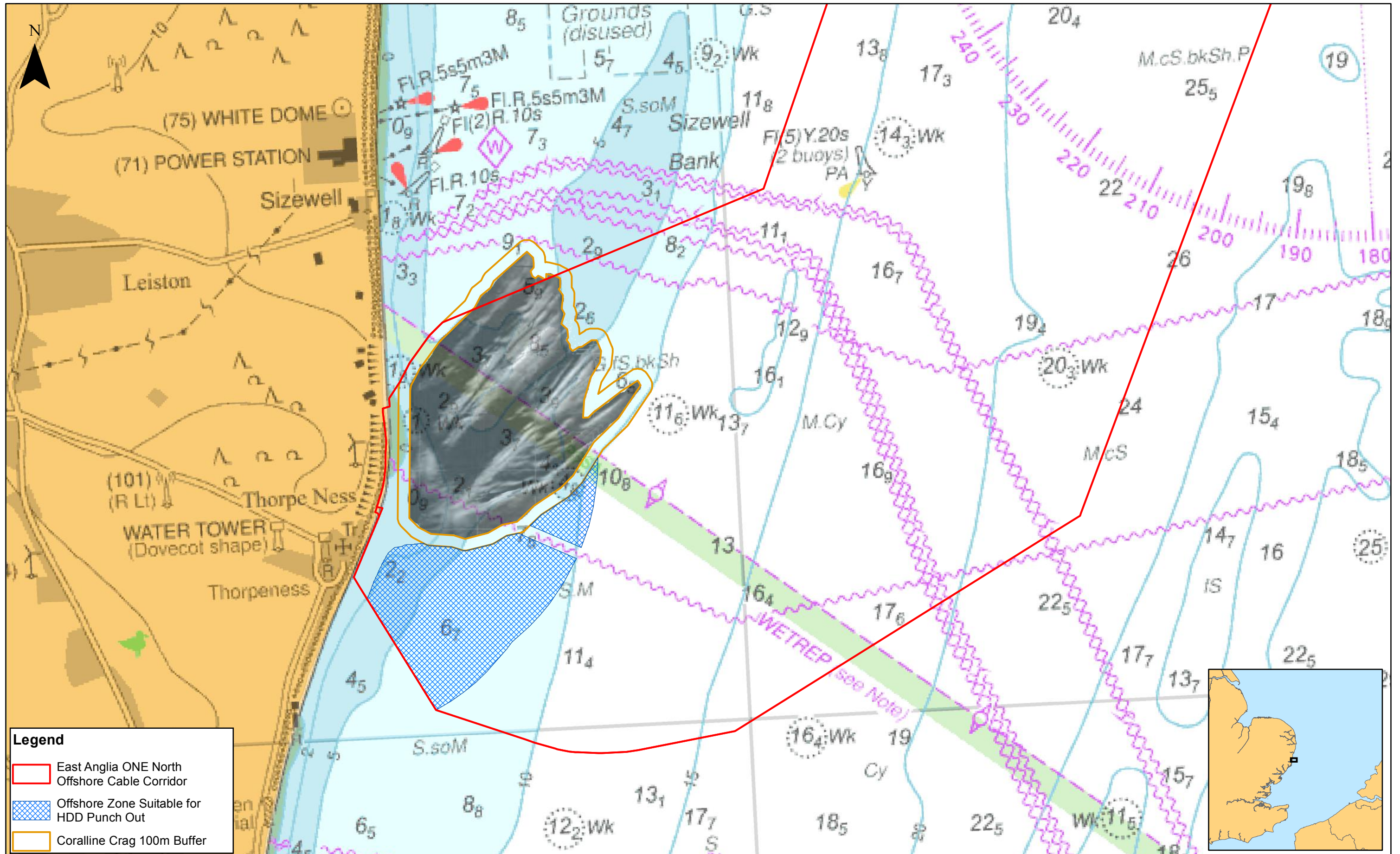
1:500,000  
Scale @ A3

0 5 10 20 Km

Source: © The Crown Estate, 2018. Charts from MarineFIND.co.uk Licence No EX001-0645-MF0095. Not to be used for navigation.  
This map has been produced to the latest known information at the time of issue, and has been produced for your information only.  
Please consult with the SPR Offshore GIS team to ensure the content is still current before using the information contained on this map.  
To the fullest extent permitted by law, we accept no responsibility or liability (whether in contract, tort (including negligence) or otherwise in respect of any errors or omissions in the information contained in the map and shall not be liable for any loss, damage or expense caused by such errors or omissions.

**East Anglia ONE North**  
Zone of Potential Influence on the Wave Regime

|        |                         |                        |
|--------|-------------------------|------------------------|
| Drg No | EA1N-DEV-DRG-IBR-000388 |                        |
| Rev    | 1                       | Coordinate System: BNG |
| Date   | 21/11/18                | Datum: OSGB36          |
| Figure | 7.8                     |                        |



**Legend**

- East Anglia ONE North Offshore Cable Corridor
- Offshore Zone Suitable for HDD Punch Out
- Coralline Crag 100m Buffer



| Rev | Date       | By | Comment      |
|-----|------------|----|--------------|
| 1   | 21/11/2018 | FC | First Issue. |

1:30,000  
Scale @ A3

0 0.25 0.5 1 Km

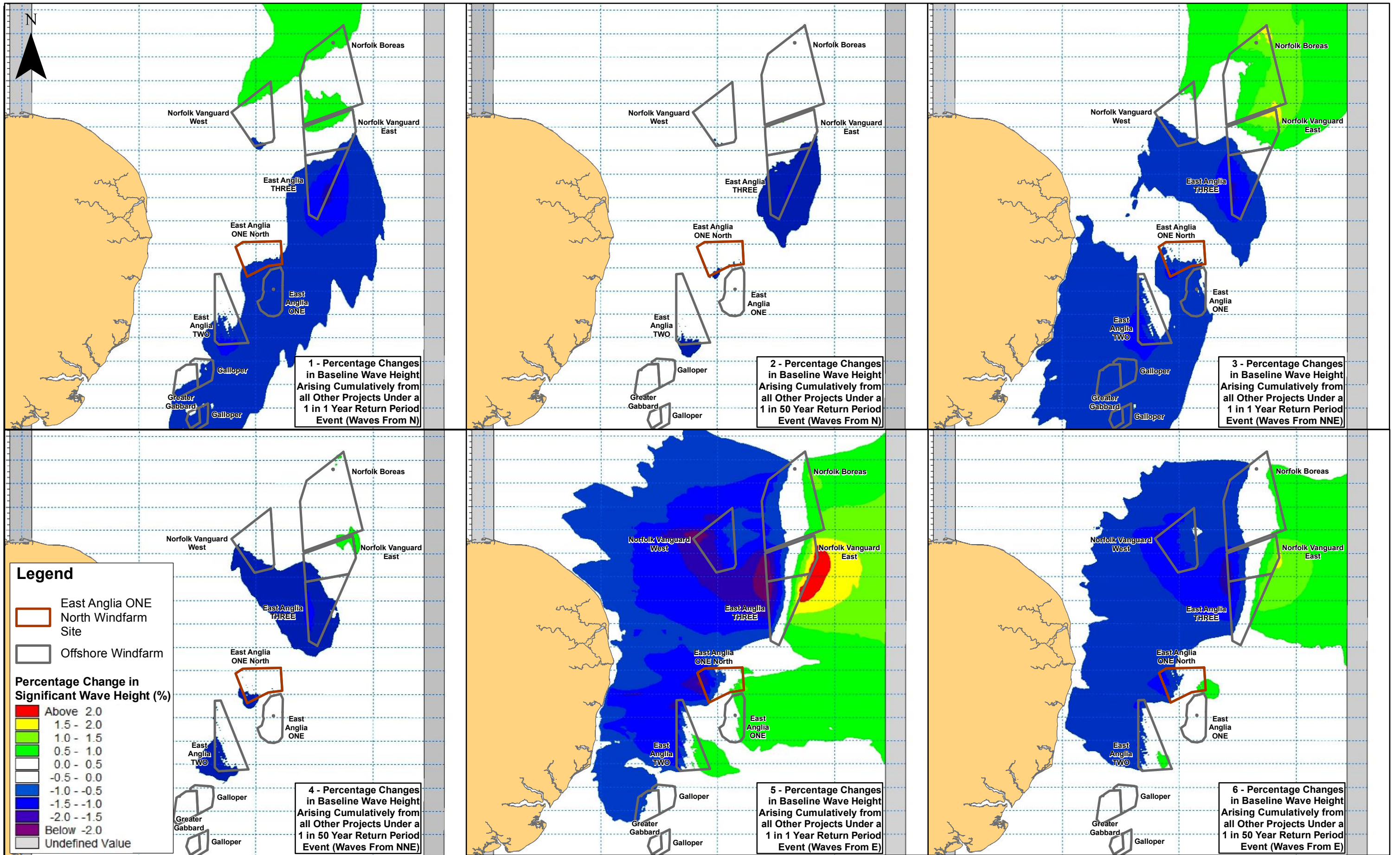
Prepared: FC  
Checked: DB  
Approved: PP

Source: © The Crown Estate, 2018. Contains MarineFIND data. Charts from MarineFIND.co.uk Licence No EK001-0645-MF0095. Not to be used for navigation.  
This map has been produced to the latest known information at the time of issue, and has been produced for your information only. Please consult with the SPR Offshore GIS team to ensure the content is still current before using the information contained on this map. To the fullest extent permitted by law, we accept no responsibility or liability (whether in contract, tort (including negligence) or otherwise in respect of any errors or omissions in the information contained in the map and shall not be liable for any loss, damage or expense caused by such errors or omissions.

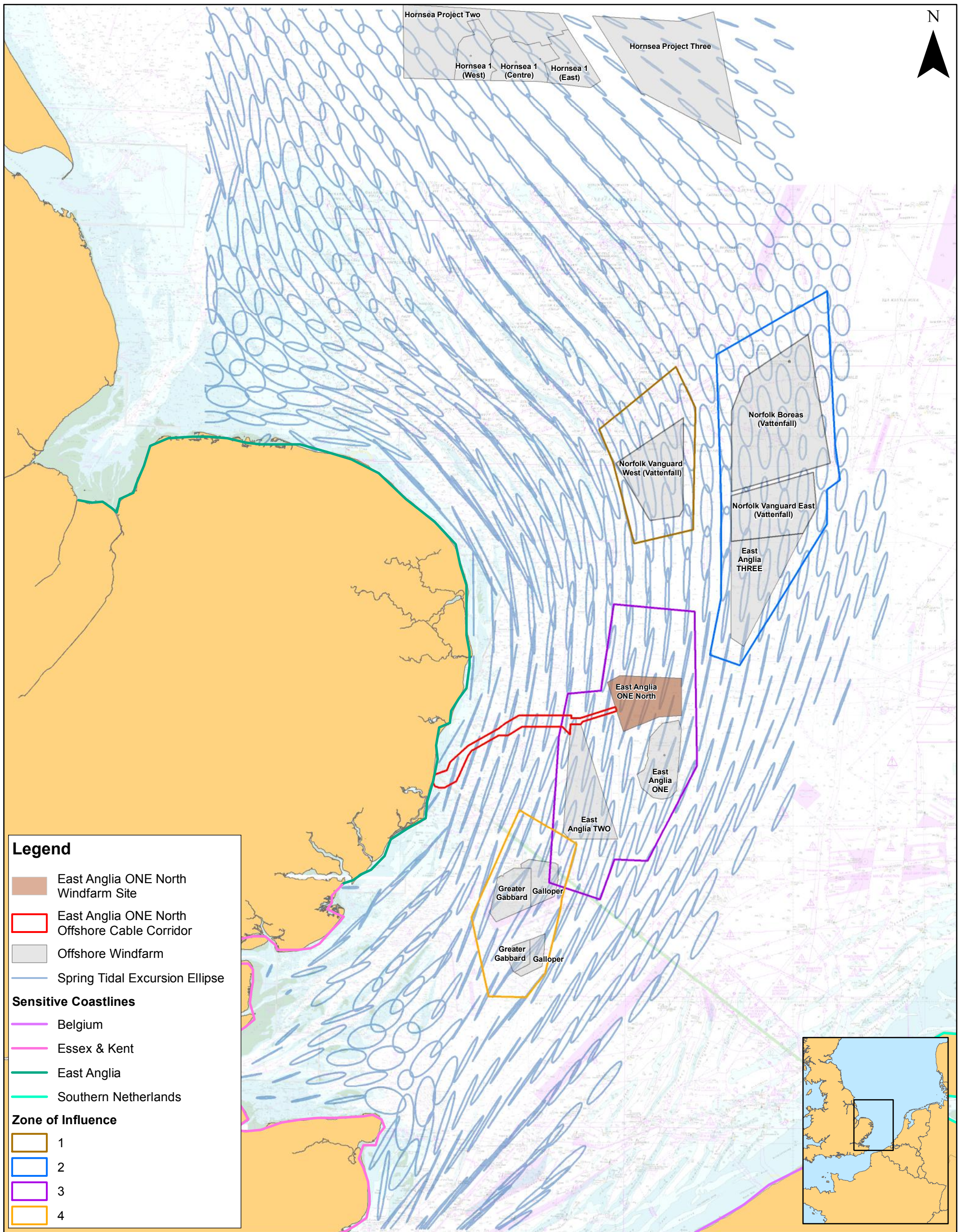
## East Anglia ONE North

### Offshore Cable Corridor and Landfall

|               |                         |                      |
|---------------|-------------------------|----------------------|
| <b>Drg No</b> | EA1N-DEV-DRG-IBR-000384 |                      |
| <b>Rev</b>    | 1                       | Datum: WGS 1984      |
| <b>Date</b>   | 21/11/18                | Projection: Zone 31N |
| <b>Figure</b> | 7.9                     |                      |



|     |      |    |         |           |    |   |   |        |          |                         |                    |
|-----|------|----|---------|-----------|----|---|---|--------|----------|-------------------------|--------------------|
|     |      |    |         | Prepared: | FC | 1:1,500,000<br>Scale @ A3<br>   | <b>East Anglia ONE North</b><br>Zone of Potential Cumulative Influence on the Wave Regime |        | Drg No   | EA1N-DEV-DRG-IBR-000386 |                    |
|     |      |    |         | Checked:  | DB |   |   |        | Rev      | 1                       | Coordinate System: |
| Rev | Date | By | Comment | Approved: | PP | <small>Source: © The Crown Estate, 2018. Charts from MarineFIND.co.uk Licence No EK001-0645-MF0095. Not to be used for navigation. This map has been produced to the latest known information at the time of issue, and has been produced for your information only. Please consult with the SPR Offshore GIS team to ensure the content is still current before using the information contained on this map. To the fullest extent permitted by law, we accept no responsibility or liability (whether in contract, tort (including negligence) or otherwise in respect of any errors or omissions in the information contained in the map and shall not be liable for any loss, damage or expense caused by such errors or omissions.</small> |   | Date   | 21/11/18 | Datum:                  | OSGB36             |
|     |      |    |         |           |    |   |   | Figure | 7.10     |                         |                    |



**Legend**

- East Anglia ONE North Windfarm Site
  - East Anglia ONE North Offshore Cable Corridor
  - Offshore Windfarm
  - Spring Tidal Excursion Ellipse
- Sensitive Coastlines**
- Belgium
  - Essex & Kent
  - East Anglia
  - Southern Netherlands
- Zone of Influence**
- 1
  - 2
  - 3
  - 4



Source: © Crown copyright. All rights reserved. 2008. © The Crown Estate, 2016. Charts from MarineFIND.co.uk Licence No EK001-0645-MF0095. Not to be used for navigation.

This map has been produced to the latest known information at the time of issue, and has been produced for your information only.

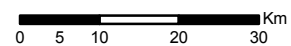
Please consult with the SPR Offshore GIS team to ensure the content is still current before using the information contained on this map.

To the fullest extent permitted by law, we accept no responsibility or liability (whether in contract, tort (including negligence) or otherwise in respect of any errors or omissions in the information contained in the map and shall not be liable for any loss, damage or expense caused by such errors or omissions.

**East Anglia ONE North**

**Zone of Potential Cumulative Influence on the Tidal Regime**

Scale @ A3: 1:950,000



|           |    |
|-----------|----|
| Prepared: | FC |
| Checked:  | DB |
| Approved: | PP |

|               |             |                         |   |
|---------------|-------------|-------------------------|---|
| <b>Figure</b> | <b>Date</b> | <b>Dwg No.</b>          | Datum: WGS 1984<br>Projection: Zone 31N |
| 7.11          | 21/11/18    | EA1N-DEV-DRG-IBR-000387 |   |

**This page is intentionally blank**