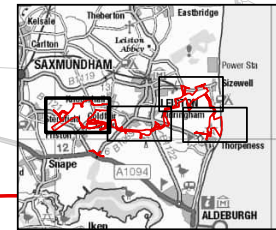
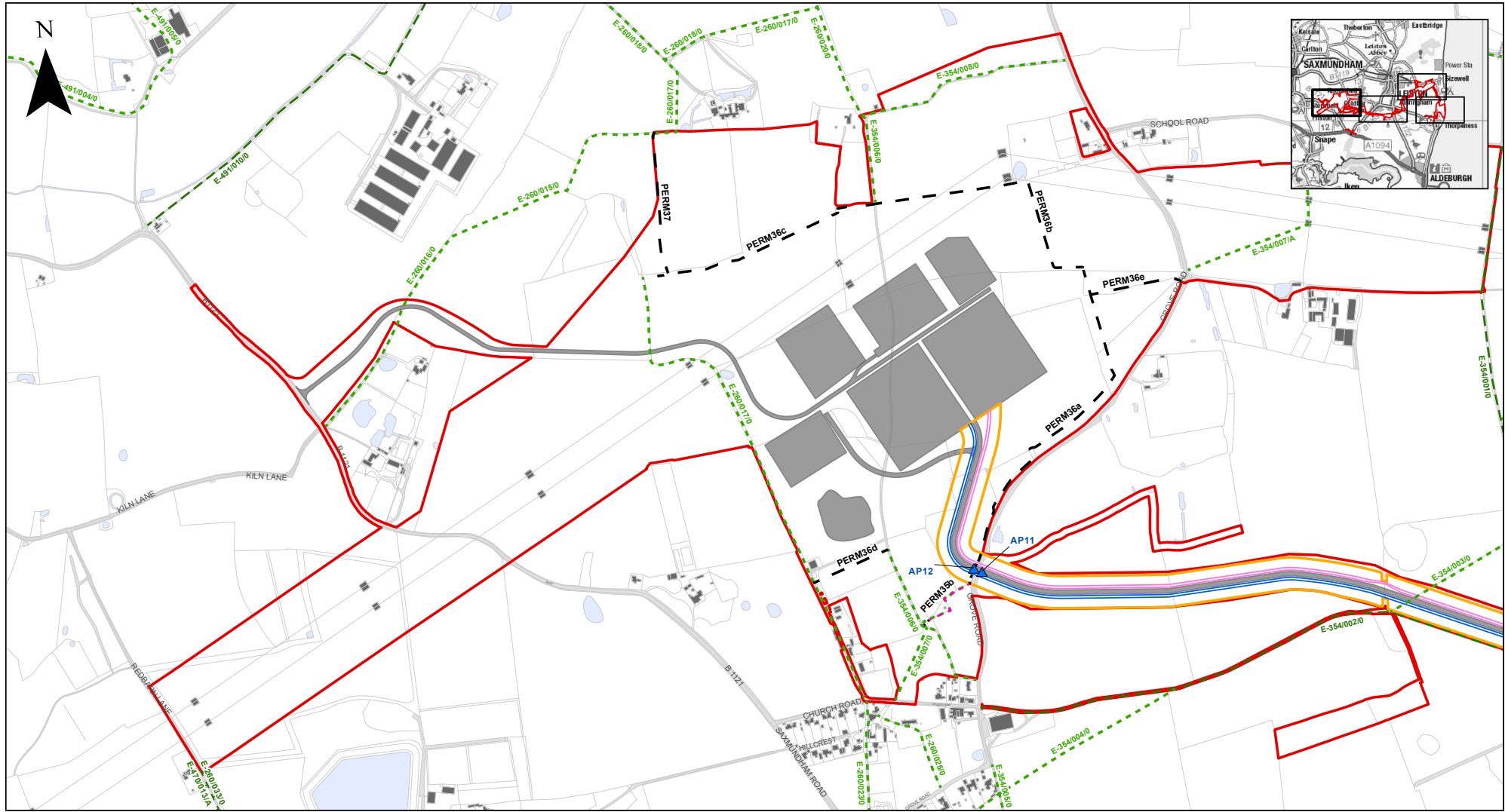


| | | | | | | | | | |
|--|------------|-------------|-----------|----------------|--------------|--|------------------------|---------------|---------------------------------|
| | | | | | 1:25,000 | | East Anglia T2O | Drg No | 404.V05356.00006.0213.0 |
| | 1 | 03/10/2025 | JH | First Issue. | Checked: JRS | | | Scale @ A3 | Rev |
| | Rev | Date | By | Comment | Approved: KG | | Date | 03/10/2025 | Projection: Transverse Mercator |
| | | | | | | | Figure | 1.1 | |



- Development Order Limits
- EA2 Proposed Cable Route
- EA1N Proposed Cable Route
- ▲ Access Point
- Substation Haul Road (SHR) Stage and Substation Stage
- Indicative Onshore Cable Working Width
- New Permanent Public Footpath
- Upgraded Footpath
- Public Right of Way (PRoW)**
- Restricted Byway
- Public Bridleway
- Public Footpath



| Rev | Date | By | Comment |
|-----|------------|----|--------------|
| 1 | 03/10/2025 | JH | First Issue. |

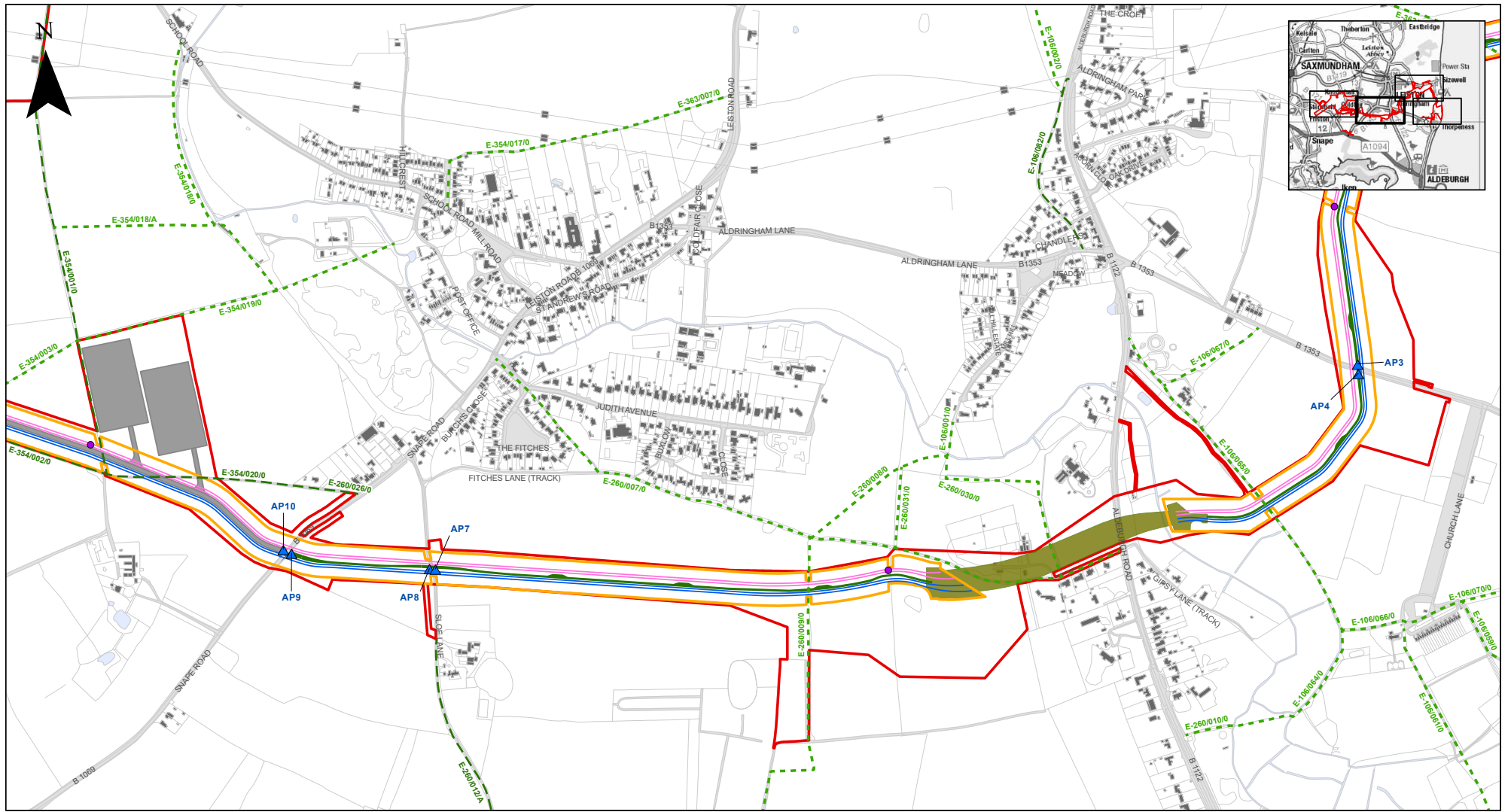
Checked: JRS
Approved: KG

Scale @ A3 1:7,500
0 100 200 400 Metres

East Anglia TWO

Onshore Cable Stage
Indicative Site Context Plan

| | | |
|---------------|-------------------------|--|
| Drg No | 404.V05356.00006.0213.0 | Datum: OSGB 1936 Projection: Transverse Mercator |
| Rev | 1 | |
| Date | 03/10/2025 | |
| Figure | 1.2 | |



- Development Order Limits
- ▲ Access Point
- EA1N Proposed Cable Route
- EA2 Proposed Cable Route
- Substation Haul Road (SHR) Stage and Substation Stage
- Indicative Onshore Cable Working Width
- Indicative Hundred River HDD Working Location
- Proposed Haul Road
- Proposed Jointing Bay Location
- Public Right of Way (PRoW)
- Public Footpath
- Public Bridleway



| Rev | Date | By | Comment |
|-----|------------|----|--------------|
| 1 | 03/10/2025 | JH | First Issue. |

1:7,500
Scale @ A3

0 100 200 400 Metres

Checked: JRS
Approved: KG

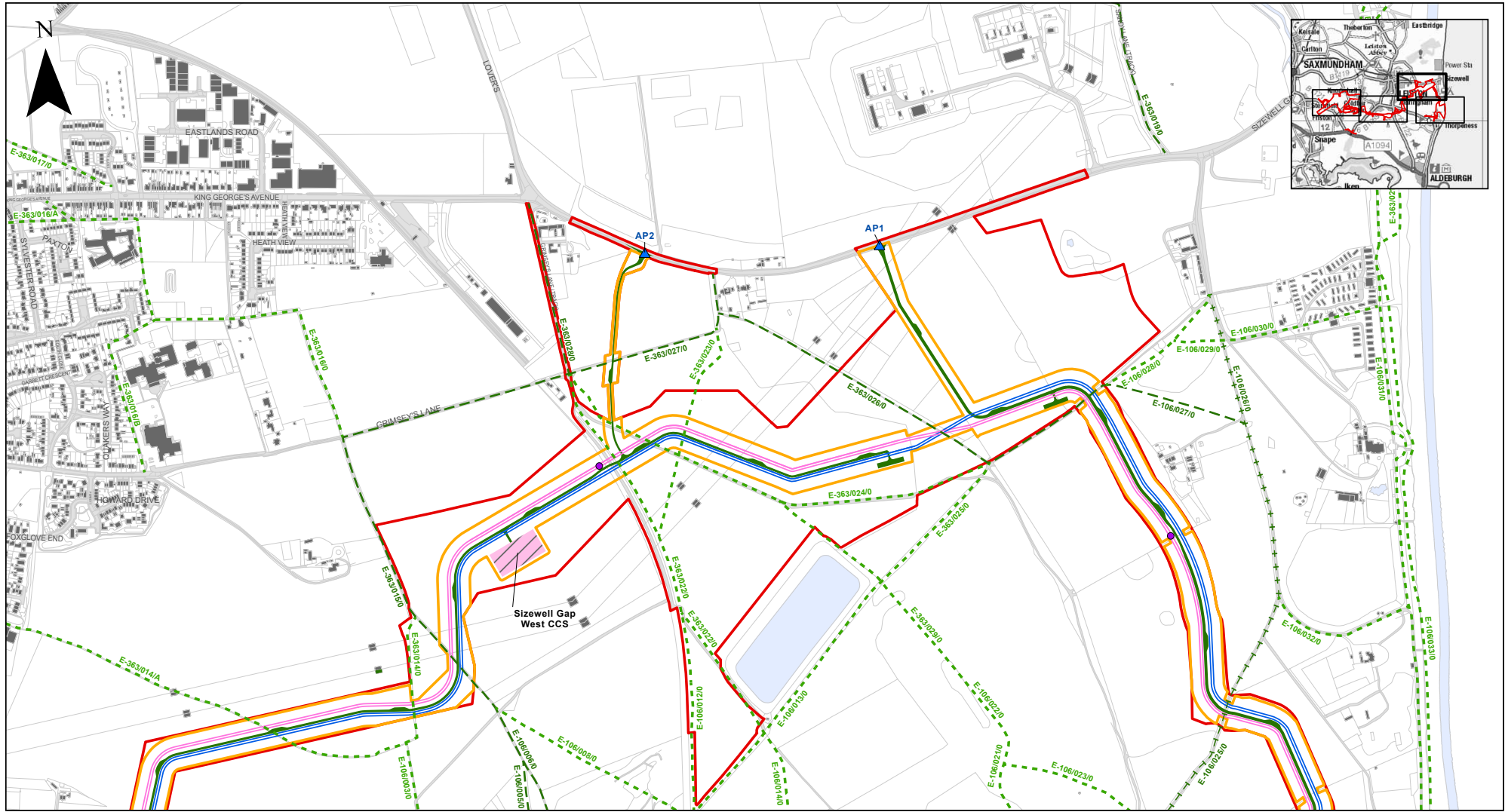
© Crown copyright (best database right) (2025) A2000808132 OS OpenData. License: The data of the data is BY-SA. This map has been produced to the latest known information at the time of issue, and has been produced for your information only. Please contact with the SRP Customer Care team to ensure the content is still current before using the information contained on this map. To the fullest extent permitted by law, we accept no responsibility or liability (whether in contract, tort (including negligence) or otherwise) in respect of any errors or omissions in the information contained in the map and shall not be liable for any loss, damage or expense caused by such errors or omissions.

East Anglia TWO

Onshore Cable Stage
Indicative Site Context Plan

| | |
|---------------|-------------------------|
| Drg No | 404.V05356.00006.0213.0 |
| Rev | 1 |
| Date | 03/10/2025 |
| Figure | 1.3 |

Datum: OSGB 1936
Projection: Transverse Mercator



- Development Order Limits
- Access Point
- Indicative Onshore Cable Working Width
- Proposed Jointing Bay Location
- Public Bridleway
- EA2 Proposed Cable Route
- Proposed Construction Consolidation Site
- Public Byway
- EA1N Proposed Cable Route
- Proposed Haul Road
- Public Right of Way (PRow)
- Public Footpath



| Rev | Date | By | Comment |
|-----|------------|----|--------------|
| 1 | 03/10/2025 | JH | First Issue. |

1:7,500
Scale @ A3

0 100 200 400 Metres

Checked: JRS
Approved: KG

© Crown copyright (best database right) (2025) ACD00088122 OS OpenData. The data of this data is © Crown copyright (best database right) (2025) ACD00088122 OS OpenData. This map has been produced to the best current information at the time of issue, and has been produced for your information only. Please contact with the SRP Operations GIS team to ensure the content is all current before using the information contained on this map. To the fullest extent permitted by law, we accept no responsibility or liability (whether in contract, tort (including negligence) or otherwise) in respect of any errors or omissions in the information contained in the map and shall not be liable for any loss, damage or expense caused by such errors or omissions.

East Anglia TWO

Onshore Cable Stage
Indicative Site Context Plan

| | |
|---------------|-------------------------|
| Drg No | 404.V05356.00006.0213.0 |
| Rev | 1 |
| Date | 03/10/2025 |
| Figure | 1.4 |

Datum: OSGB 1936
Projection: Transverse Mercator

