

East Anglia THREE

# Chapter 22

## Land Use Figures

**Environmental Statement**

Volume 2

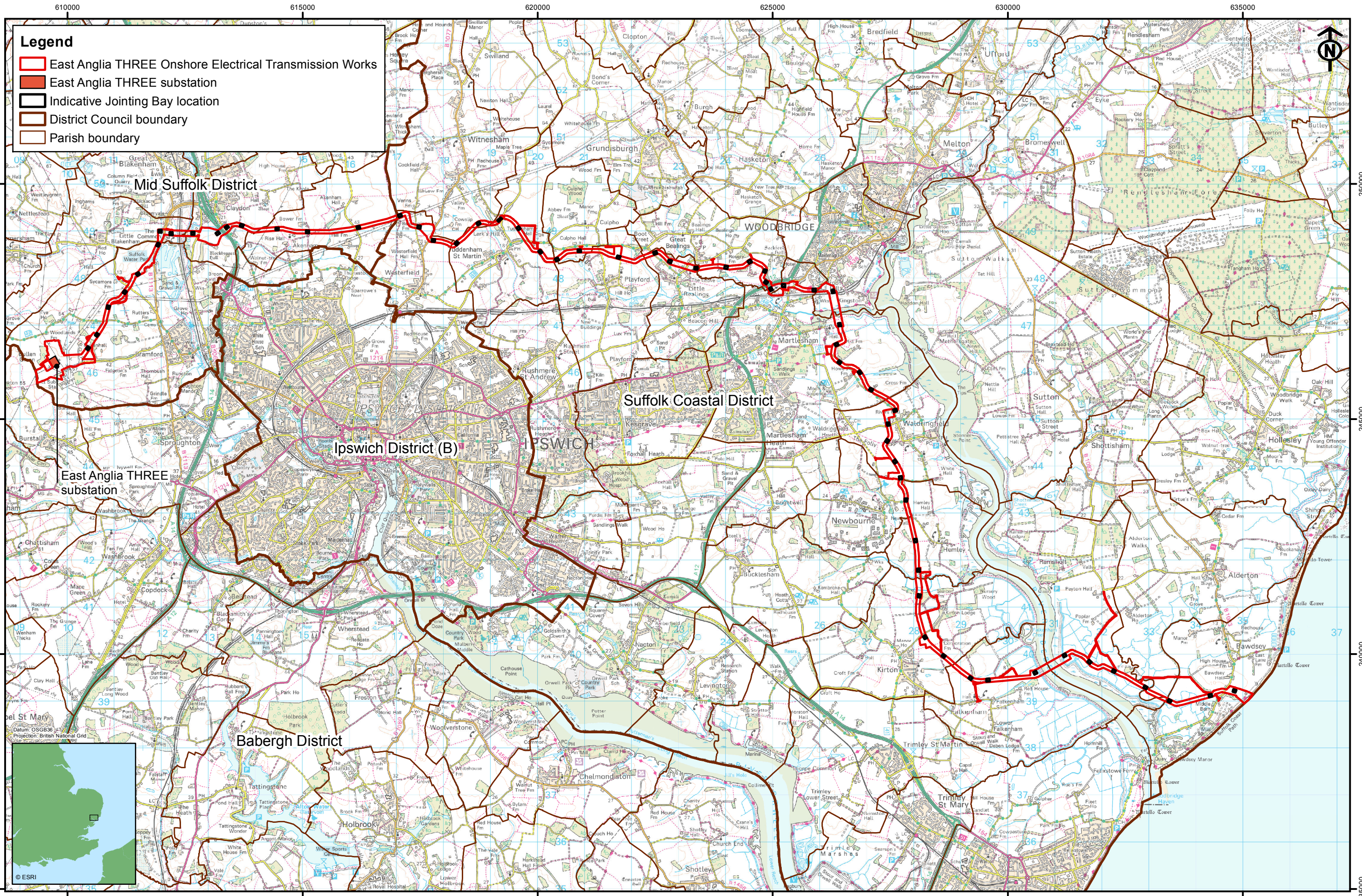
Document Reference – 6.2.22 (a)

Author – Royal HaskoningDHV  
East Anglia THREE Limited  
Date – November 2015  
Revision History – Revision A



**This Page is Intentionally Blank**





**Legend**

- East Anglia THREE Onshore Electrical Transmission Works
- East Anglia THREE substation
- Indicative Jointing Bay location
- District Council boundary
- Parish boundary



Rev	Date	By	Comment
2	20/10/15	JE	Second issue
1	25/06/15	JE	First issue

Original A3 Plot Scale 1:75,000

0 1 2 km

© Crown Copyright 2015. All rights reserved. Ordnance Survey Licence 0100031673.

**East Anglia THREE Limited**  
Land use study area

Drg No	EA3-L-061	<b>Volume</b>	<b>2</b>
Rev	2	<b>Figure</b>	<b>22.1</b>
Date	20/10/2015		
Layout	N/A		

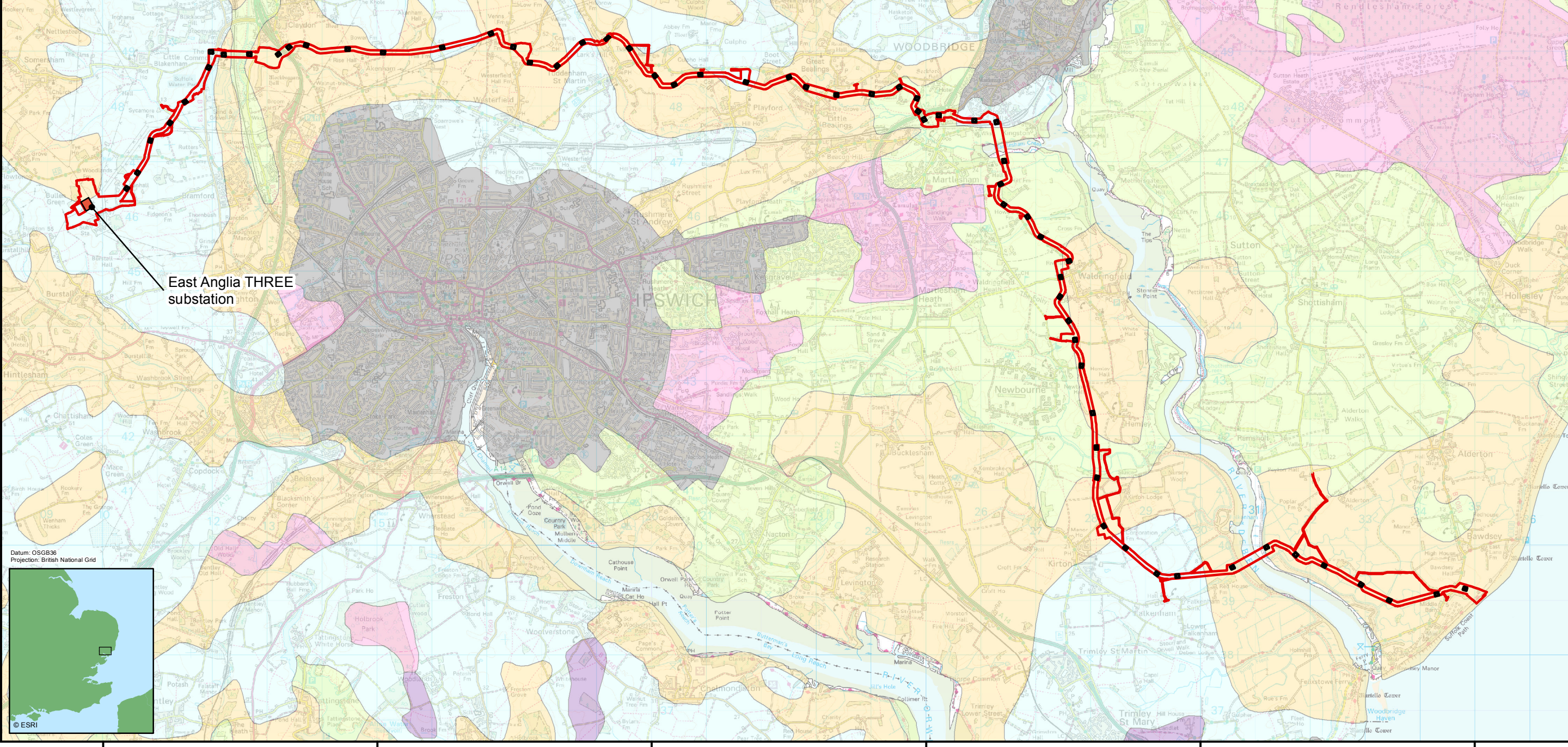


**Legend**

- East Anglia THREE Online Electrical Transmission Works
- East Anglia THREE substation
- Indicative Jointing Bay location

**Agricultural classes**

- Grade 1
- Grade 2
- Grade 3
- Grade 4
- Grade 5
- Non agricultural
- Urban

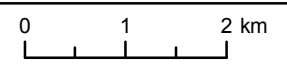


East Anglia THREE substation



3	22/10/15	AB	Third issue
2	15/07/15	JE	Second issue
1	26/05/15	JE	First issue
Rev	Date	By	Comment

Original A3 Plot Scale  
1:75,000

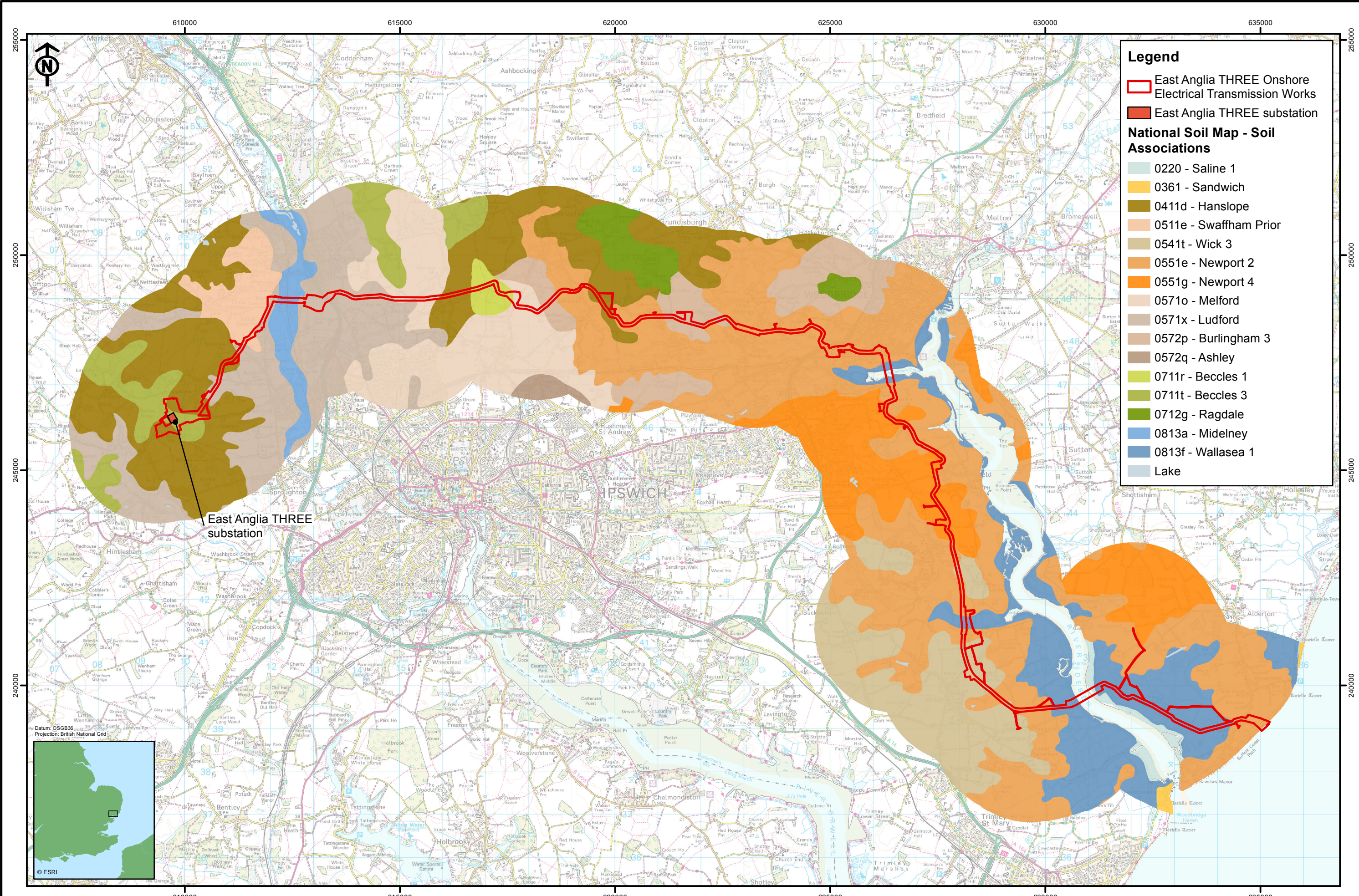


Environmental data © Natural England copyright 2015.  
© Crown Copyright 2015. All rights reserved.  
Ordnance Survey Licence 0100031673.

**East Anglia THREE Limited**  
Agricultural land classification

Drg No	EA3-L-062	<b>Volume</b>	<b>2</b>
Rev	3	<b>Figure</b>	<b>22.2</b>
Date	22/10/2015		
Layout	N/A		





**Legend**

- East Anglia THREE Onshore Electrical Transmission Works
- East Anglia THREE substation

**National Soil Map - Soil Associations**

- 0220 - Saline 1
- 0361 - Sandwich
- 0411d - Hanslope
- 0511e - Swaffham Prior
- 0541t - Wick 3
- 0551e - Newport 2
- 0551g - Newport 4
- 0571o - Melford
- 0571x - Ludford
- 0572p - Burlingham 3
- 0572q - Ashley
- 0711r - Beccles 1
- 0711t - Beccles 3
- 0712g - Ragdale
- 0813a - Midelney
- 0813f - Wallasea 1
- Lake

East Anglia THREE substation



**SCOTTISHPOWER RENEWABLES VATTENFALL**

Rev	Date	By	Comment
3	23/10/15	AB	Third issue
2	28/09/15	LB	Second issue
1	14/07/15	JE	First issue

Original A3 Plot Scale 1:80,000

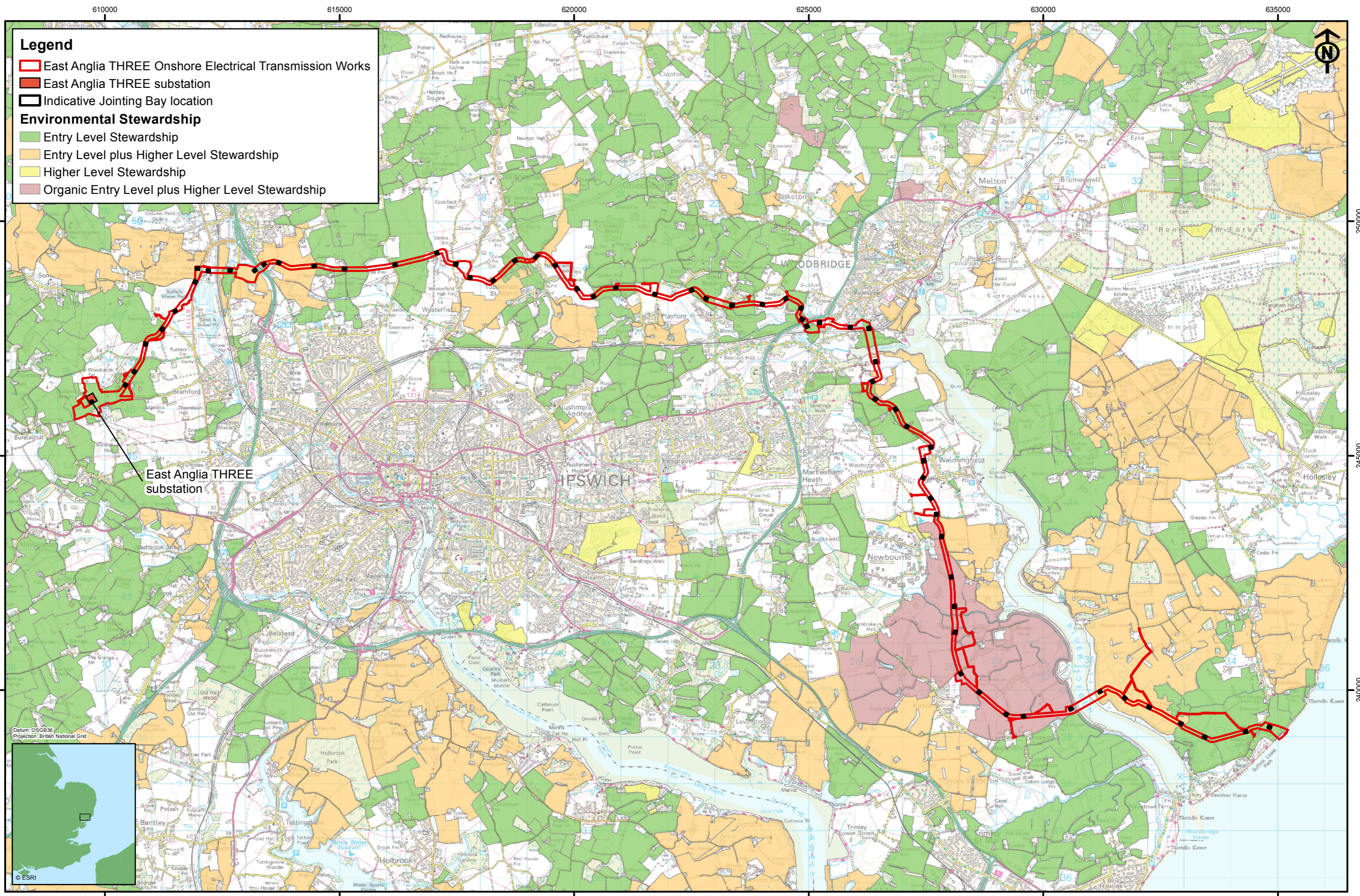
0 1 2 km

© Crown Copyright 2015. All rights reserved. Ordnance Survey Licence 0100031673. Soil data © Cranfield University (NSRI) and for the Controller of HMSO 2015

**East Anglia THREE Limited**  
Soil associations

Drg No	EA3-L-066	<b>Volume</b>	<b>2</b>
Rev	3	<b>Figure</b>	<b>22.3</b>
Date	23/10/2015		
Layout	N/A		





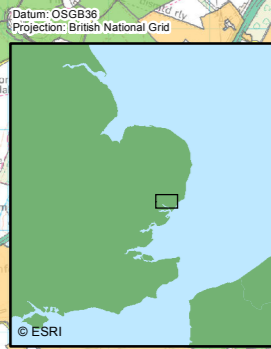
**Legend**

- East Anglia THREE Onshore Electrical Transmission Works
- East Anglia THREE substation
- Indicative Jointing Bay location

**Environmental Stewardship**

- Entry Level Stewardship
- Entry Level plus Higher Level Stewardship
- Higher Level Stewardship
- Organic Entry Level plus Higher Level Stewardship

East Anglia THREE substation



Rev	Date	By	Comment
3	22/10/15	AB	Third issue
2	15/07/15	JE	Second issue
1	25/06/15	JE	First issue

Original A3 Plot Scale 1:75,000

0 1 2 km





Environmental data © Natural England copyright 2015.  
© Crown Copyright 2015. All rights reserved.  
Ordnance Survey Licence 0100031673.

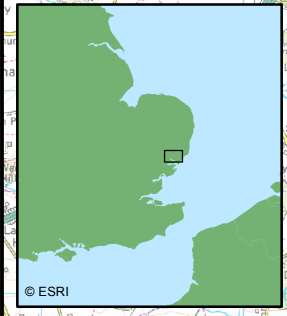
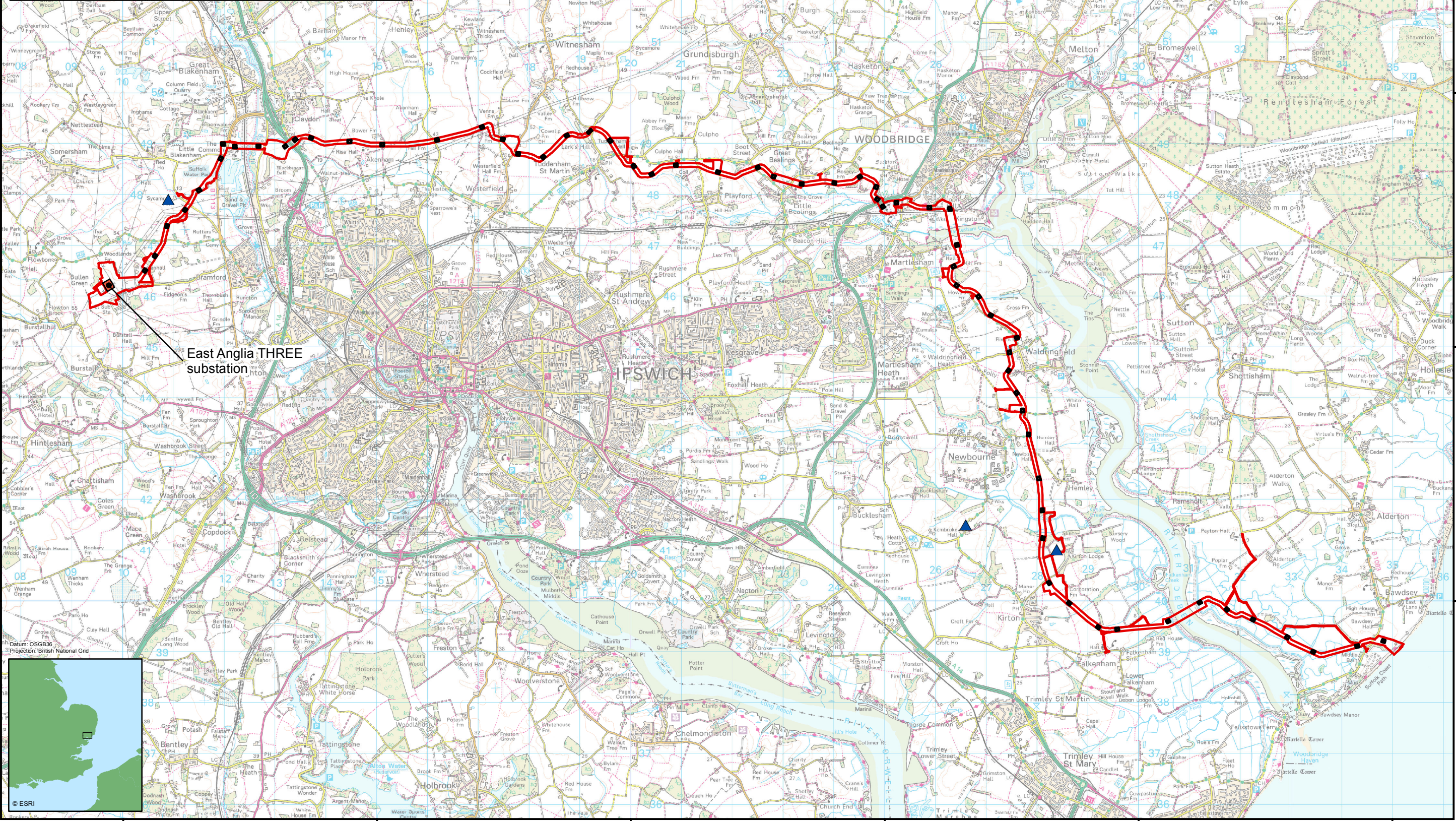
**East Anglia THREE Limited**  
Environmental stewardship schemes

Drg No	EA3-L-063	<b>Volume</b>	<b>2</b>
Rev	3	<b>Figure</b>	<b>22.4</b>
Date	22/10/2015		
Layout	N/A		



**Legend**

-  East Anglia THREE Onshore Electrical Transmission Works
-  East Anglia THREE substation
-  Indicative Jointing Bay location
-  Notifiable scheduled diseases



**SCOTTISHPOWER RENEWABLES** **VATTENFALL**

Rev	Date	By	Comment
3	22/10/15	AB	Third issue
2	15/07/15	JE	Second issue
1	25/06/15	JE	First issue

Original A3 Plot Scale 1:75,000

0 1 2 km

Notifiable scheduled diseases data supplied by RSK © Crown Copyright 2015. All rights reserved. Ordnance Survey Licence 0100031673.

**East Anglia THREE Limited**  
**Statutory Notices for Notifiable Scheduled Diseases**

Drg No	EA3-L-064	<b>Volume</b>	<b>2</b>
Rev	3	<b>Figure</b>	<b>22.5</b>
Date	22/10/2015		
Layout	N/A		



**This Page is Intentionally Blank**



Chapter 22 Figures (a) End Here