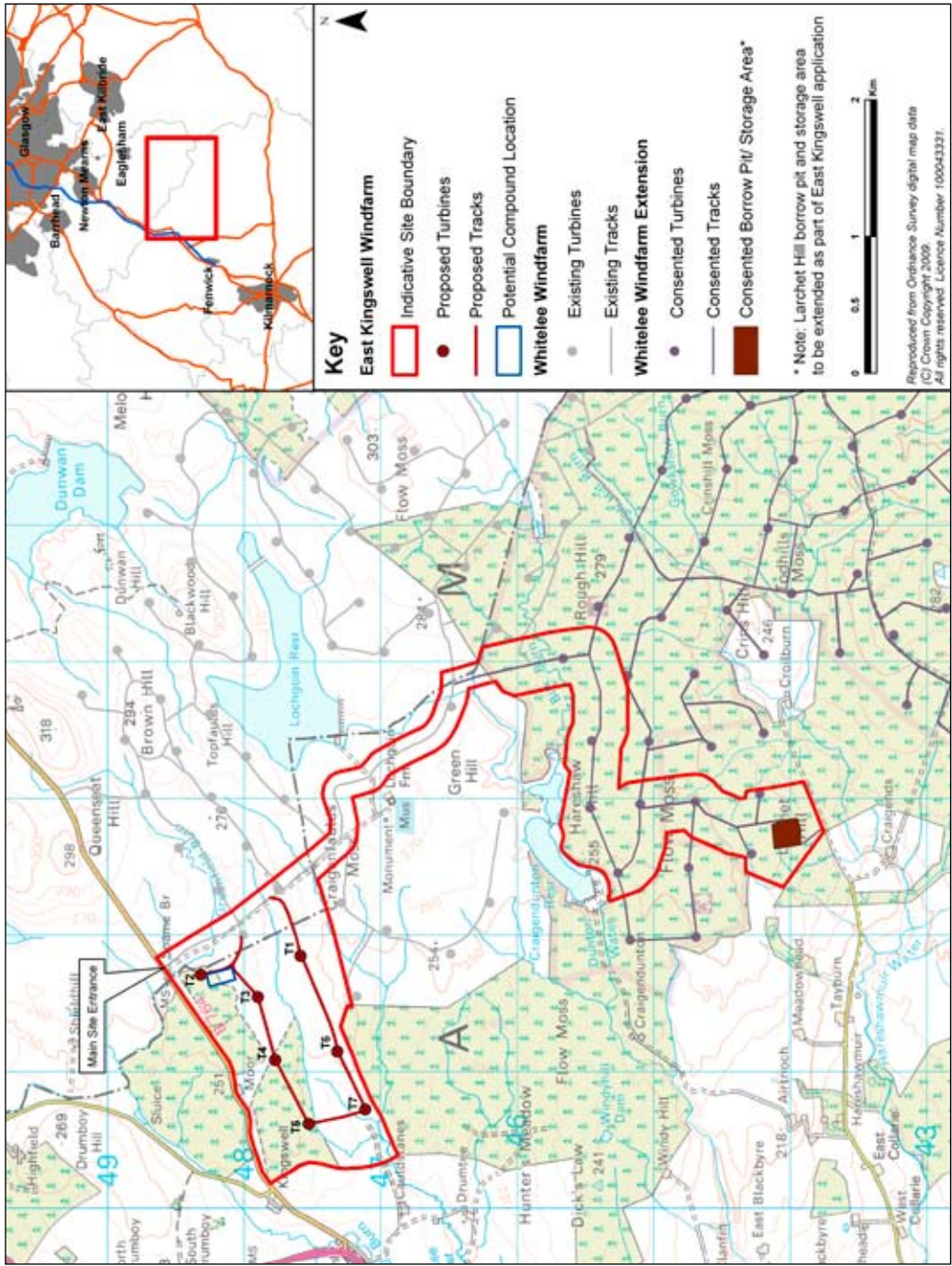


**WHY DEVELOP EAST KINGSWELL WINDFARM?**

Proposed layout



**FURTHER INFORMATION**

ScottishPower Renewables aims to submit an application under the Town and Country Planning (Scotland) Act 1997, for the construction and operation of East Kingswell (Whitelee Extension) Windfarm, to East Ayrshire Council and East Renfrewshire Council in Summer 2010.

A public information day will be held as follows:

**Fenwick**  
 The Fenwick Hotel, J8, M77, Fenwick, Kilmarnock, KA3 6AU  
 Wednesday 3rd March, 3pm until 7.30pm

The Public Information Day will present information on the East Kingswell (Whitelee Extension) Windfarm proposals. Our staff will be on hand to describe the project and to answer any queries.

If you have any questions or wish to provide comments please contact ScottishPower Renewables using the details below. Any comments made are not representations to the East Ayrshire or East Renfrewshire Council. There will be an opportunity to make direct representations to the Local Planning Authority when a planning application is submitted.



1 Atlantic Quay, 4th Floor  
 Glasgow, G2 8JB  
 Telephone 0141 614 0433, Fax 0141 614 0401  
[www.scottishpowerrenewables.com](http://www.scottishpowerrenewables.com)  
[eastkingswellwindfarm@scottishpower.com](mailto:eastkingswellwindfarm@scottishpower.com)

Printed on paper produced in sustainable forests

The images and information contained within this leaflet are for illustrative purposes only.



**EAST KINGSWELL WINDFARM**

**Public Information Day**

**Fenwick**  
 The Fenwick Hotel, J8, M77, Fenwick, Kilmarnock, KA3 6AU  
 Wednesday 3rd March, 3pm until 7.30pm



## EAST KINGSWELL WINDFARM

ScottishPower Renewables (SPR) is looking to submit an application to build and operate an extension to Whitelee Windfarm at East Kingswell. The site is situated adjacent to the Whitelee Windfarm entrance on Eaglesham Moor, and lies predominantly within East Ayrshire. It is intended that East Kingswell Windfarm will utilise the existing Whitelee Windfarm entrance from the B764 road, within East Renfrewshire.

The proposal is for seven turbines, with a total generating capacity of up to 26 megawatts. SPR anticipates that the selected turbine will have three blades, with a tip height in the region of 140 metres.

We are currently undertaking an Environmental Impact Assessment for East Kingswell Windfarm and intend to submit a Planning Application to East Ayrshire Council and East Renfrewshire Council in Summer 2010.

SPR is holding a Public Information Day, prior to submitting a Planning Application, in order to update the local community on the progress of the project and answer any questions.

## WHY DEVELOP EAST KINGSWELL WINDFARM?

Renewable Energy is set to play a major role in our energy needs, with onshore windfarms leading the way. Reducing our reliance on fossil fuels is a major aim for everyone and the Scottish Government has set targets of 50% of Scotland's electricity coming from renewable sources by 2020.

Extensive investigations have identified Whitelee and East Kingswell as an excellent site for the harvesting of renewable energy in terms of technical, planning and environmental criteria, as it offers the following:

- **A good wind resource**
- **Good access to site**
- **Minimal disruption to local people during construction**
- **Environmentally suitable**
- **Proximity to potential grid connection points**

## RENEWABLE ENERGY AND GLOBAL CLIMATE CHANGE

Renewable energy sources are those such as sunlight, wind, waves and tides, which are continuously replenished. Of these renewables, wind power is currently the most economical and technically advanced and is an energy resource that has been harnessed for at least 2000 years. It offers global benefits in terms of electricity generation in that it is free from emissions of carbon dioxide (the main 'greenhouse' gas associated with global climate change) and other pollutants, such as sulphur dioxide or oxides of nitrogen, which can lead to acid rain.

Wind energy provides us with a clean, safe, sustainable energy source enabling us to reduce these damaging emissions and protect our environment. It also provides diversity and therefore security in UK energy supplies by reducing dependency on imported finite fossil fuels such as coal, oil and gas.

## ENVIRONMENTAL IMPACT ASSESSMENT

Environmental Impact Assessment (EIA) is the process by which environmental information is collected, incorporated in design, published and taken into account in reaching a decision on a relevant planning application. This is set out under the relevant EIA Regulations and the EIA for East Kingswell Windfarm is being undertaken in accordance with The Electricity Works (Environmental Impact Assessment) (Scotland) Regulations 2000.

A key part of the EIA process is the collection of environmental information, (including the assessment of the likely effects of the development on the environment) and the subsequent publication of this information in the form of an Environmental Statement (ES).

The legislation requires the assessment and description of the likely significant environmental effects of the development and any mitigation measures to reduce, prevent and offset significant effects.

The environmental assessment for East Kingswell Windfarm is progressing through an iterative process, taking into consideration local issues such as land use, ornithology, ecology, archaeology, hydrology, landscape and visual effects, and feedback from consultation.

## THE ENVIRONMENTAL STATEMENT

The findings of the Environmental Impact Assessment will be presented in an Environmental Statement (ES) which will accompany the planning application and sets out:

- **The background to the site selection process**
- **The windfarm development**
- **The nature of the site and its surroundings**
- **The potential effects of the development on the local environment**
- **The measures proposed to mitigate any significant adverse effects**

Once complete, copies of the Environmental Statement (ES) will be available for public viewing at appropriate accessible locations, such as local libraries. A non-technical summary will be available free of charge.