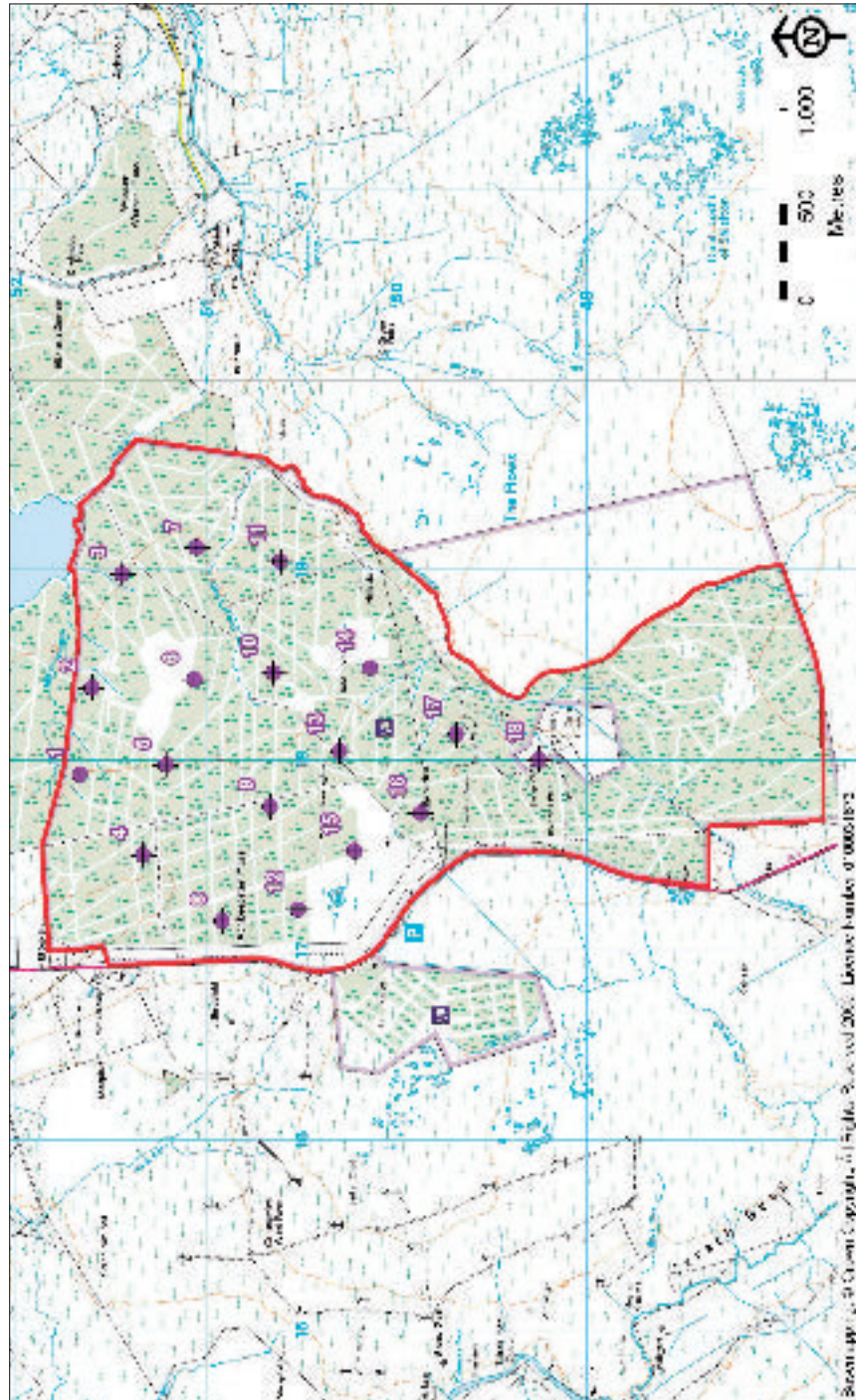


HALSARY WINDFARM DEVELOPMENT



FURTHER INFORMATION

ScottishPower Renewables plan to submit an application under the Town & Country Planning (Scotland) Act 1997 for Halsary Windfarm to the Highland Council in November 2009.

Pre-submission public information days are planned at the following venues and dates:

Spittal

Spittal Village Hall

Tues 29 September, 3pm until 7pm

Watten

Watten Village Hall

Wed 30 September, 3pm until 7pm

The public information days will present information on the proposal and provide an opportunity to gain further information. Our staff will be on hand to describe the project and to answer any queries.

If you have any queries or questions please contact SPR using the contact details below.



1 Atlantic Quay, 4th Floor, Glasgow G2 8JB

Tel 0141 614 0439, Fax 0141 614 0401

www.scottishpowerrenewables.com

halsary@scottishpower.com

For the latest news on Halsary windfarm and to register your details to receive automatic updates please visit www.halsarywindfarm.com.

Printed on paper produced in sustainable forests



HALSARY WINDFARM

Public Information Days

Spittal

Spittal Village Hall

Tues 29 September

3pm until 7pm

Watten

Watten Village Hall

Wed 30 September

3pm until 7pm



WHY BUILD A WINDFARM AT HALSARY?

Renewable Energy is set to play a major role in our energy needs, with onshore windfarms leading the way.

Reducing our reliance on fossil fuels is a major aim for everyone, and the Scottish Government has set a target for the supply of 50% of Scotland's electricity from renewable sources by 2020.

Extensive investigations have identified Halsary as an excellent site for the harvesting of renewable energy in terms of technical, planning and environmental criteria as it offers the following:

- A good wind resource
- Good access to the site
- No environmental designations within the site
- Environmentally suitable
- Proximity to potential grid connection points

ENVIRONMENTAL IMPACT ASSESSMENT

Environmental Impact Assessment (EIA) is the process by which environmental information is collected, incorporated in design, published and taken into account in reaching a decision on a relevant planning application.

This is set out under the relevant EIA Regulations and is being undertaken in accordance with Town & Country Planning (Environmental Impact Assessment) (Scotland) Regulations 1999.

A key part of the EIA process is the collection of environmental information, (including the assessment of the likely effects of the redevelopment on the environment) and the subsequent publication of this information in the form of an Environmental Statement (ES).

The legislation requires the assessment and description of the likely significant environmental effects of the development and any mitigation measures to reduce, prevent and offset significant effects.

The environmental assessment for Halsary has progressed through an iterative process to determine the most appropriate windfarm design. The turbine layout has been refined in response to specific local issues such as land use, ornithology, ecology, archaeology, hydrology, landscape and visual effects, and feedback from consultation.

Whilst in some instances the refinements have reduced the number of turbines on the site, SPR considers that the proposed layout achieves the correct balance between the economic, social and environmental considerations of this development.

HALSARY WINDFARM

ScottishPower Renewables (SPR) plan to submit an application to Highland Council to build and operate a windfarm at Halsary in Caithness. The site is located approximately 2km south of the village of Spittal, adjacent to the existing Causeymire windfarm.

The proposal is for 18 turbines with a generating capacity of approximately 41 Megawatts (MW). The turbines will have a tip height of up to 100m.

We are now coming to the end of our surveys and assessments and intend to submit a planning application to Highland Council in November 2009.

SPR will be holding two Public Information Days, prior to the submission of the planning application, in order to update the local community on the progress of the project and answer any questions.



RENEWABLE ENERGY AND GLOBAL CLIMATE CHANGE

Renewable energy sources are those such as sunlight, wind, waves and tides, which are continuously replenished. Of these renewable sources, wind power is currently the most economical and technically advanced and is an energy resource that has been harnessed for at least 2000 years.

It offers global benefits in terms of electricity generation in that it is free from emissions of carbon dioxide (the main 'greenhouse' gas associated with global climate change) and other pollutants, such as sulphur dioxide or oxides of nitrogen, which can lead to acid rain.

Wind energy provides us with a clean, safe, sustainable energy source enabling us to reduce these damaging emissions and protect our environment. It also provides diversity and therefore security in UK energy supplies by reducing dependency on imported finite fossil fuels such as coal, oil and gas.

THE ENVIRONMENTAL STATEMENT

The findings of the Environmental Impact Assessment will be presented in an Environmental Statement (ES), which will accompany the planning application and sets out:

- The background to the site selection process
- The windfarm development
- The nature of the site and its surroundings
- The potential effects of the development on the local environment
- The measures proposed to mitigate any significant adverse effects

On submission of the planning application, copies of the Environmental Statement will be available for public viewing at various local venues as well as the Council's Planning office in Wick. Copies can also be purchased at a cost of £300.00 per hard copy of the main ES volume (including Technical Appendix) and £20.00 for a CD-ROM by calling the number overleaf. Non-technical summaries of the ES are also available free of charge.

